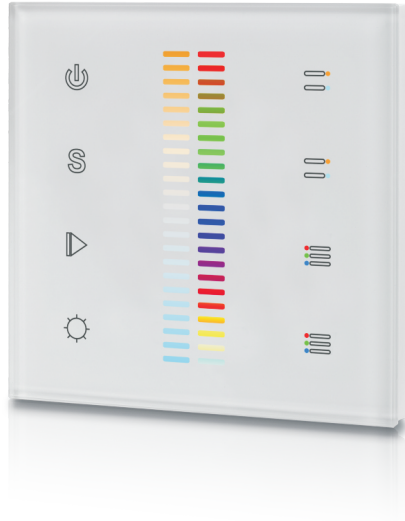


RF Wall Mounted DMX512 Master SR-2830CDMX



Feature

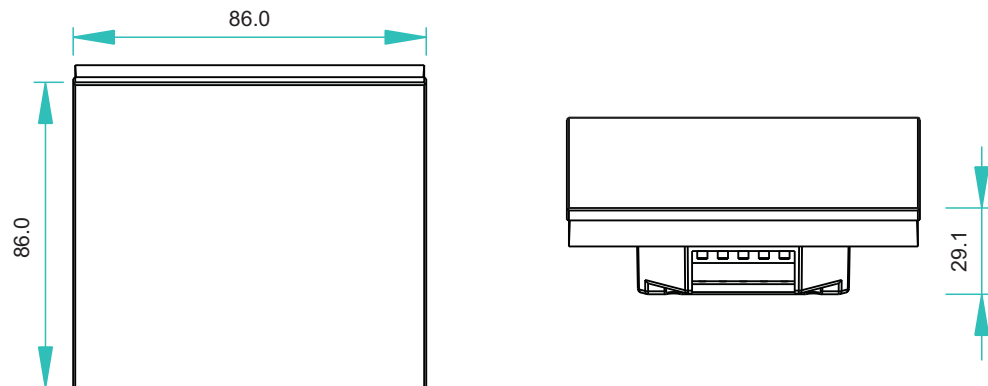
- Backlight
- Glass interface
- Touch sensitive
- Adjust RGB & color temperature



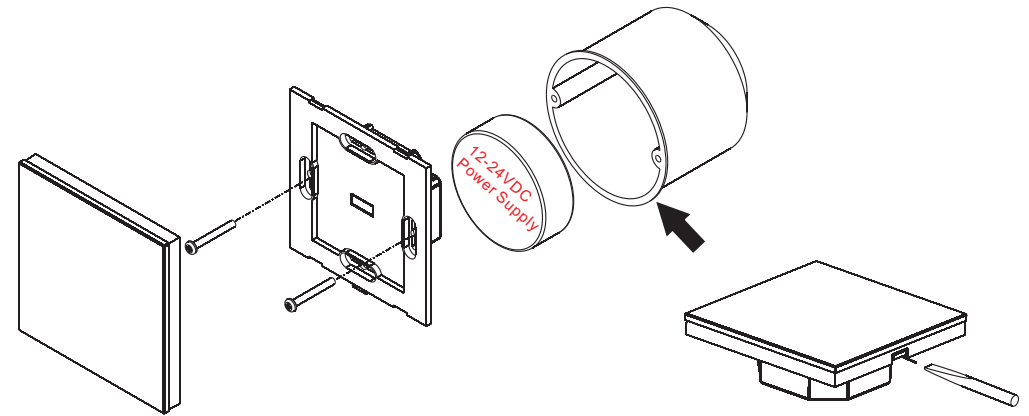
Parameter

Part No.	Input Voltage	Output	Size
SR-2830CDMX	12-24VDC	DMX512 Signal	86x86x29.1

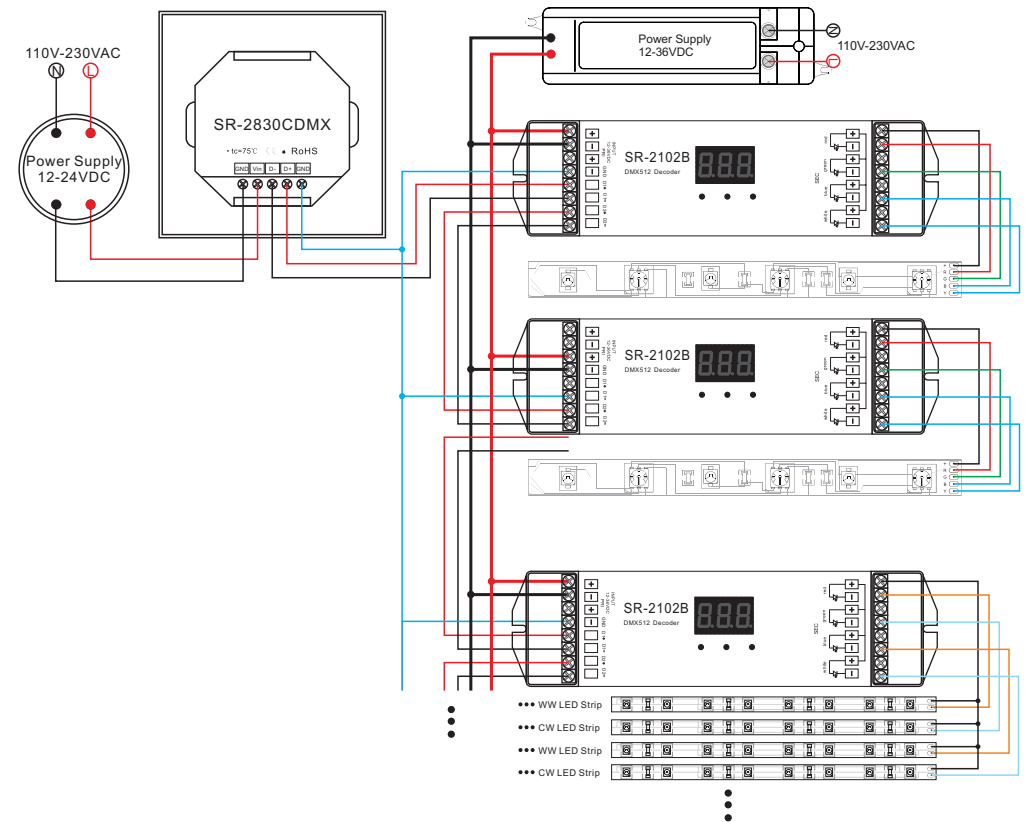
Product Size



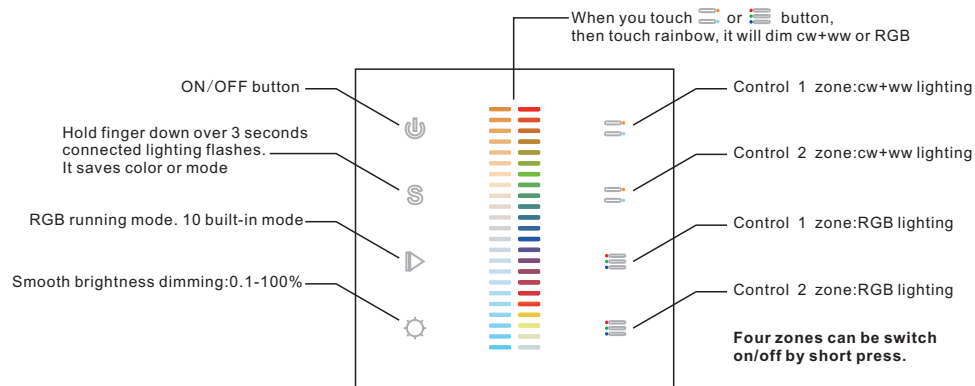
Installation



Wiring diagram



Description of buttons



Operation

How to operate zone button

After connect well with DMX decoders, please set the DMX decoders address as below:

DMX decoder's address 001 is controlled by 1 zone :cw+ww lighting

DMX decoder's address 005 is controlled by 2 zone :cw+ww lighting

DMX decoder's address 009 is controlled by 1 zone :RGB lighting

DMX decoder's address 013 is controlled by 2 zone :RGB lighting

Short press zone number is to choose a zone, long press zone number is turn on/off that zone individually
To synchronize several zones, short press 2 or more buttons one after another, then touch the color wheel

Note: CCT zones and RGB zones are not available to synchronize at the same time.

Save and recall

Save: Touch any zone button [zone button icon]

Touch color slider to get a color→

Hold S button for over 3 seconds, connected light flick means successfully saved.

Recall: Short touch button S → Recall the color saved.

Note : [white bar] only can learn for LED CW+WW lighting.

[rainbow bar] only can learn for LED RGB lighting.

Running mode

There are 10 build-in modes in [play button] button, which running modes are only for RGB lighting.

Short press on button [play button] to run mode. Hold finger down on [play button] button can speed up /down.

Dimming

Hold your finger down on button [gear icon], brightness will dim smoothly from 0.1% to 100%.

Attention

- 1) The product shall be installed with qualified person
- 2) IP20. Please avoid the sun and rain. When installed outdoors, please ensure it is mounted in a water proof enclosure.
- 3) Always be sure to mount this unit in an area with proper ventilation to avoid overheating.
- 4) Please check if the output voltage of any LED power supplies used comply with the working voltage of the product.
- 5) Never connect any cables while power is on and always assure correct connections to avoid short circuits before switching on.
- 6) Please ensure that the cable is secured tightly in the connector
- 7) For updated information please consult your supplier.

Warranty Agreement

- 1) We provide lifelong technical assistance with this product:
 - 5-year warranty. We print produce date on every products, for example :1125 means year 2011, week 25. The warranty is for free repair or replacement and covers manufacturing faults only.
 - For faults beyond the 3-year warranty we reserve the right to charge for time and parts.
- 2) Limited Warranty
 - Any defects caused by wrong operation.
 - Any damages caused by unauthorized removal, maintenance, modifying, incorrect connection and replacement of chips.
 - Any damages due to transportation, vibration etc. after purchase.
 - Any damages caused by earthquake, fire, lightning, pollution and abnormal voltage.
 - Any damages caused by negligence, inappropriate storing at high temperatures and humidity or near harmful chemicals.
- 3) Repair or replacement as provided under this warranty is the exclusive remedy to the customer.