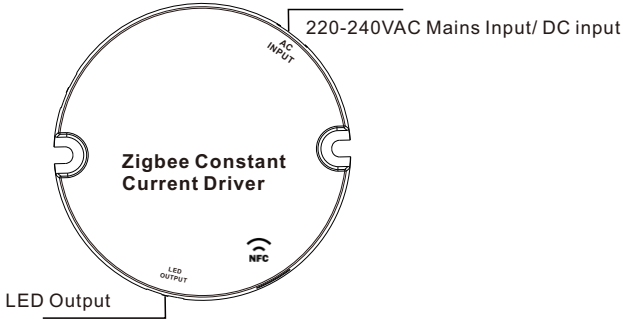


15W 2CH Zigbee NFC Round LED Driver(Constant Current)



Important: Read All Instructions Prior to Installation

Function introduction



Product Data

Output	LED Channel	2
	DC Voltage	10-42V, Max.48V
	Current	200-700mA via NFC tool; Min.current gear lower to 0.1mA, default 350mA
	Current Accuracy	±3%(±1%@Certain full load) @ full load
	Rated Power	Max. 15W
Input	Voltage Range	220-240VAC/220-240VDC
	Absolute Voltage Range	198-264VAC/198-264VDC
	Frequency Range	0/50/60Hz
	Power Factor (Typ.)	> 0.945 @ 230VAC Full load*
	Total Harmonic Distortion	THD ≤ 15% (@ full load / 230VAC)*
	Efficiency (Typ.)	> 79% @ 230VAC full load*
	AC Current (Typ.)	0.1A Max.
	Inrush Current (Typ.)	Max. 4.66A at 230VAC; 72µs duration
	Leakage Current	< 5mA /230VAC
	Standby Power Consumption	< 0.5W
Control	Anti Surge	L-N:2KV
	Dimming Interface	Zigbee
	Dimming Range	0.01%-100%@ Max current
	Dimming Method	Amplitude/CCR dimming
	Dimming Curve	Linear/ Logarithmic optional

Protection	Short Circuit	Yes, recovers automatically after fault condition is removed
	Over Current	Yes, recovers automatically after fault condition is removed
	Over Temperature	Yes, recovers automatically after temperature drop
Environment	Working Temp.	-25°C ~ +60°C
	Max. Case Temp.	Tc=90°C
	Working Humidity	10% ~ 95% RH non-condensing
	Storage Temp. & Humidity	-40°C ~ +80°C, 10% ~ 95% RH
Safety & EMC	Safety Standards	EN61347-1, EN61347-2-13, GB/T 19510.1-2023, GB/T 19510.213-2023
	Withstand Voltage	I/P-O/P: 3.75KVAC
	Isolation Resistance	I/P-O/P: 100M Ohms / 500VDC / 25°C / 70% RH
	EMC Emission	EN55015, EN61000-3-2, EN61000-3-3, GB 17625.1-2022, GB/T 17743-2021
	EMC Immunity	EN61547, EN61000-4-2,3,4,5,6,8,11
Others	MTBF	191470H, MIL-HDBK-217F @ 230VAC full load and 25°C ambient temperature
	Dimension	φ57x24mm (D*H)
	Warranty	5 Years
	Packaging	Inner box: 115x65x30mm; Carton: 380x270*280mm; 96 pcs/carton

- *: PF/THD/Eff shall be different per different testing setup and equipment.
- Dimmable LED driver, ZigBee device based on ZigBee 3.0 protocol
 - Dimmable LED driver. Max. output power 15W
 - 200-700mA current selectable via NFC program tool. Min.current gear lower to 0.1mA
 - Configuration via NFC program tool
 - Class II power supply, full isolated plastic case
 - High power factor and efficiency
 - ON/OFF, Dimming and Tunable White control
 - Amplitude/CCR dimming, smooth and deep dimming
 - ZigBee end device that supports Touchlink commissioning
 - Can directly pair to a compatible ZigBee remote via Touchlink
 - Supports zigbee green power and can bind max. 20 zigbee green power switches
 - Compatible with universal ZigBee gateway products
 - Waterproof grade: IP20, suitable for indoor LED lighting applications
 - 5 years warranty

Safety & Warnings

- DO NOT install with power applied to the device.
- DO NOT expose the device to moisture.

Operation--Zigbee Network

1.Do wiring according to connection diagram correctly.

2.This ZigBee device is a wireless receiver that communicates with a variety of ZigBee compatible systems. This receiver receives and is controlled by wireless radio signals from the compatible ZigBee system.

3. Zigbee Network Pairing through Coordinator or Hub (Added to a Zigbee Network)

Step 1: Remove the device from previous zigbee network if it has already been added to, otherwise pairing will fail.

Step 2: From your ZigBee Controller or hub interface, choose to add lighting device and enter Pairing mode as instructed by the controller.

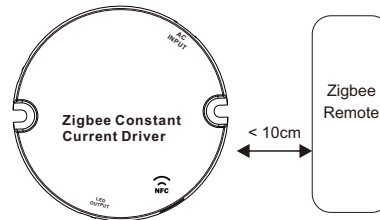
Step 3: Power on the device, it will be set into network pairing mode (connected light flashes twice slowly), the network pairing mode will last until the device is added to a zigbee network.

Step 4: Connected light will blink 5 times and then stay solid on, then the device will appear in your controller's menu and can be controlled through controller or hub interface.

4. TouchLink to a Zigbee Remote

Step 1: Method 1: re-power on the device 4 times to start Touchlink commissioning immediately, 180S timeout, repeat the operation.

Method 2: If the device is already added to a network, it will be set into Touchlink commissioning immediately, 180S timeout. Once timeout, re-power on the device to set it into touchlink commissioning again.



Step 2: Bring the remote or touch panel within 10cm of the lighting device.

Step 3: Set the remote or touch panel into Touchlink commissioning, please refer to corresponding remote or touch panel manual to learn how.

Step 4: There shall be indication on the remote for successful link and connected light will flash twice.

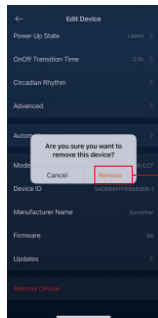
Note: 1) Directly TouchLink (both not added to a ZigBee network), each device can link with 1 remote.

2) TouchLink after both added to a ZigBee network, each device can link with max. 30 remotes.

3) To control by both gateway and remote, add remote and device to network first then TouchLink.

4) After TouchLink, the device can be controlled by the linked remotes.

5. Removed from a Zigbee Network through Coordinator or Hub Interface



From your ZigBee controller or hub interface, choose to delete or reset the lighting device as instructed. The connected light blinks 3 times to indicate successful reset.

6. Factory Reset Manually

Step 1: Enable Pairing via NFC App or re-power on the device for 5 times continuously .

Step 2: Connected light will blink 3 times to indicate successful reset.

Note: 1) If the device is already at factory default setting, there is no indication when factory reset again .
2) All configuration parameters will be reset after the device is reset or removed from the network.

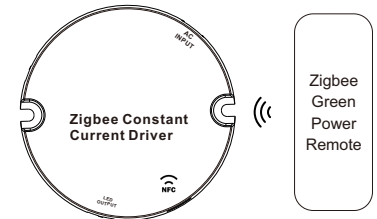
7. Learning to a Zigbee Green Power Switch

Step 1: Re-power on the device 4 times to start Learning to GP switch mode (connected light flashes twice), 180 seconds timeout, repeat the operation.

Step 2: Set the green power switch into Learning mode, please refer to its manual.

Step 3: Connected light will flash twice to indicate successful learning. Then the switch can control the device.

Note: Each device can learn to max. 20 zigbee green power switches.

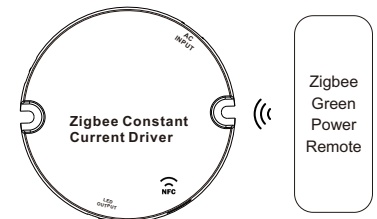


8. Delete Learning to a Zigbee Green Power Switch

Step 1: Re-power on the device 3 times to start delete Learning to GP switch mode (connected light flashes slowly), 180 seconds timeout, repeat the operation.

Step 2: Set the paired green power switch into Learning mode, please refer to its manual.

Step 3: Connected light will flash 4 times to indicate successful deleting.



9. ZigBee Clusters the device supports are as follows:

Input Clusters

• 0x0000: Basic • 0x0003: Identify • 0x0004: Groups • 0x0005: Scenes • 0x0006: On/off
• 0x0008: Level Control • 0x0300: Color Control • 0x0b05: Diagnostics

Output Clusters

• 0x0019: OTA

10. OTA

The device supports firmware updating through OTA, and will acquire new firmware from zigbee controller or hub every 10 minutes automatically.

With NFC Programming devices

Note

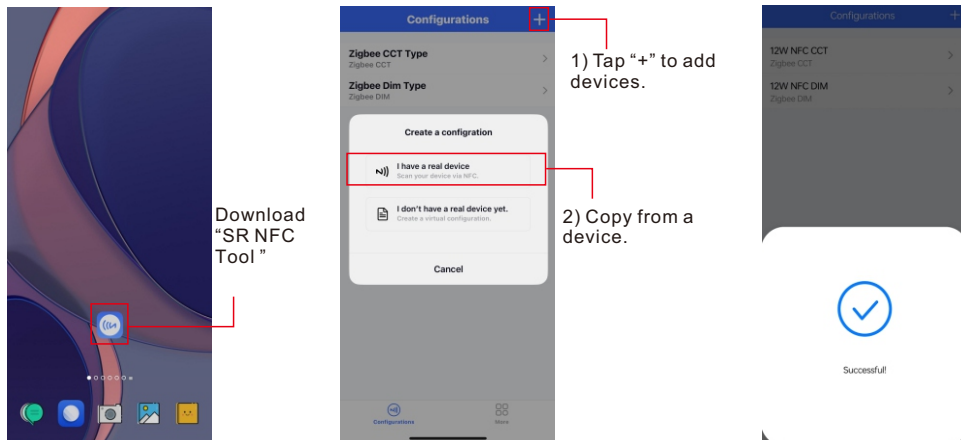
1) Do wiring according to the wiring diagram .

2) Recommend setting parameters without power-on devices .

2) Please make sure your mobile phone has NFC function and enable it .

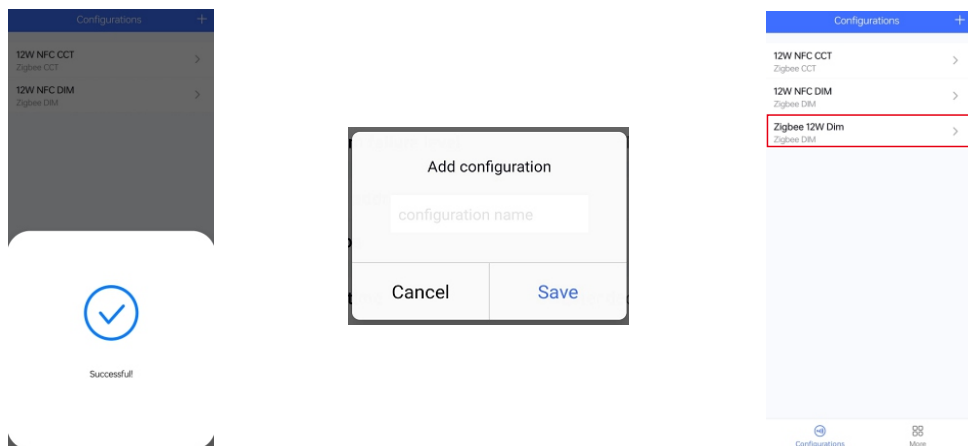
Working with “SR NFC Tool” APP

Step 1: Download the APP (searching “SR NFC Tool” from App Store and Google Playstore) .
Then open the APP .

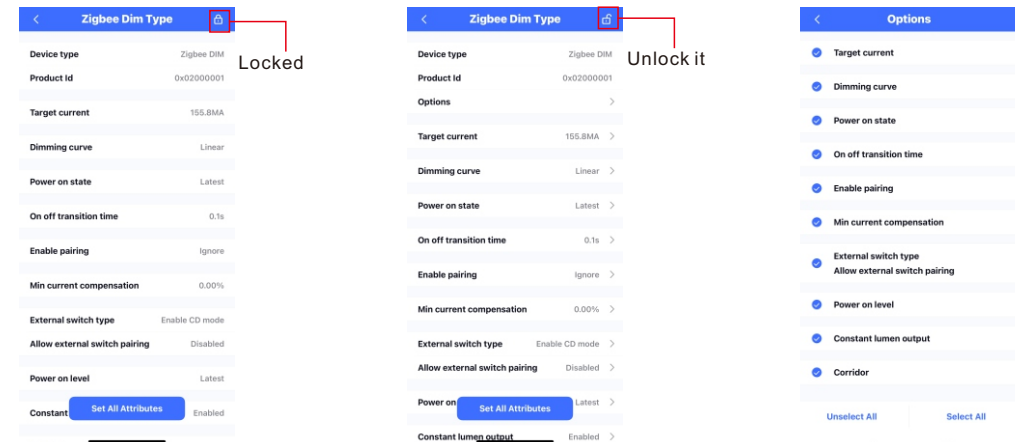


Note: 1. Please Make sure that you have enabled NFC function with your mobile phone/ tablet .
2. Please Make sure that the “NFC position” is matched.
3. Please do not power on the device before setting.
4. If you can't download “SR NFC Tool”. Please contact with us.

Step 2: Add device, and name it as you wish.

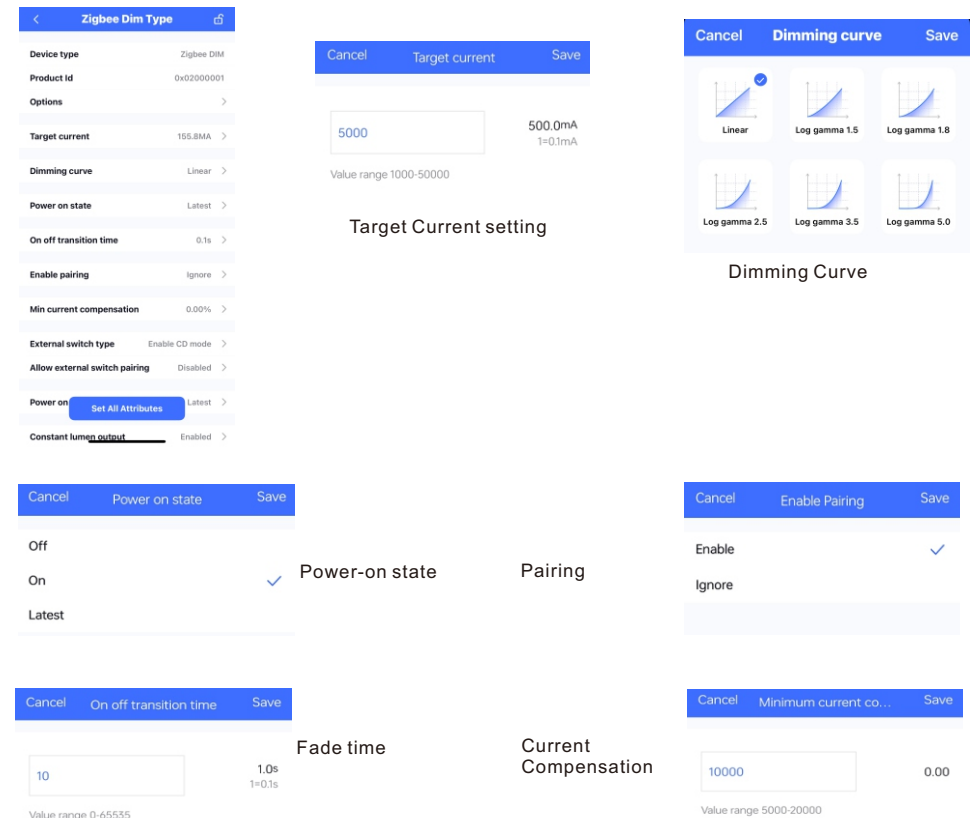


Step 3: Unlock device, enter parameters configuring page.



Note: 1. You have to unlock the device then do some settings
2. Only when the corresponding function is selected, the function interface will be displayed.

Step 4: Few parameter interface, you can choose the setting based on your requirements.



Cancel External switch Save

External switch type

- ☒ Push button switch
- ☐ Normal on/off switch
- ☐ 3-way switch
- ☐ Enable CD mode

Allow external switch pairing ☐

Constant lumen enable ☒

Preview

Output Level (%)

Operating Time (kh)

Times and Levels

1	2	3	4
0 kh	10 kh	20 kh	30 kh
80%	85%	90%	92%

5	6	7	8
Invalid	Invalid	Invalid	Invalid

Read Write

Select external switch type

Constant lumen output function

Power on level

Cancel Power on level Save

Level

255 (Latest)

0 255

Min level Max level Latest

Corridor dim function

*Under this mode, please make sure the CD mode is enabled.

Cancel Corridor Save

Preview

Level (%)

Fade in Occupied Fade out Prolonged Override

Fade in time

1 s

Value range 0-100

Occupied time

180 s

Value range 0-60000

Read Write

Function setting Via “SR NFC TOOL”

< Zigbee Dim Type >

Device type Zigbee DIM

Product Id 0x02000001

Options >

Target current 155.8mA >

Dimming curve Linear >

Power on state Latest >

On off transition time 0.1s >

Enable pairing Ignore

Min current compensation 0.00% >

External switch type Enable CD mode >

Allow external switch pairing Disabled >

Power on Set All Attributes Latest >

Constant lumen output Enabled >

Enter Zigbee Functions

Cancel Enable pairing Save

Enable pairing ☒

Ignore ☐

Enable Touchlink & GP mode ☐

Enable Find&Bind / Delete GP ☐

Read Write

4 Different settings.

1) Enable pairing

- Enable the Zigbee NFC drivers enter the pairing mode and add it into the Zigbee network.
- Factory reset. Enable the configured Zigbee NFC driver into configuring mode.
- Besides, you can re-power the device 5 times to enable this section as well.

2) Ignore

- Remember, once you need to write other parameters into the NFC driver, you should select this section, so as not to change the driver's state.

3) Enable Touchlink & GP mode

- Select this section and write it into the Zigbee NFC driver, the driver will enter Touchlink mode and GP Mode.

Note: You can both have Touchlink and GP functions as long as you matched with Touchlink function first.

- Besides, you can re-power the device 4 times to enable this section as well.

4) Enable Find&Bind / Delete GP

- Select this section and write it into the Zigbee NFC driver, the driver will enter Find&Bind mode, and it will delete previous GP bonding.

- Besides, you can re-power the device 3 times to enable this section as well.

Step 5: After setting, please save the selected configuration via NFC and power on the device.

< Zigbee 12W Dim >

Device Type Zigbee DIM

Product Id 0x02000001

Options >

Target current 500.0mA >

Dimming curve Log gamma 1.8 >

Power on state On >

Ready to Write

Touch the device with the back of the mobile device.

Cancel

< Zigbee 12W Dim >

Device Type Zigbee DIM

Product Id 0x02000001

Options >

Target current 500.0mA >

Dimming curve Log gamma 1.8 >

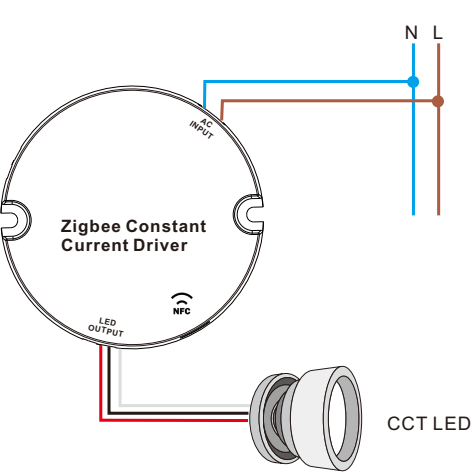
Power on state On >

Successful

Tips

- NFC function doesn't require any power driver.
- Many functions can be configured by NFC. Kindly check your desired functions.
- You can create a default profile with the “+” button.

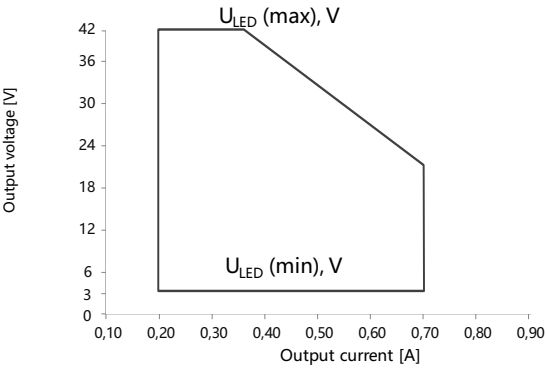
Wiring Diagram



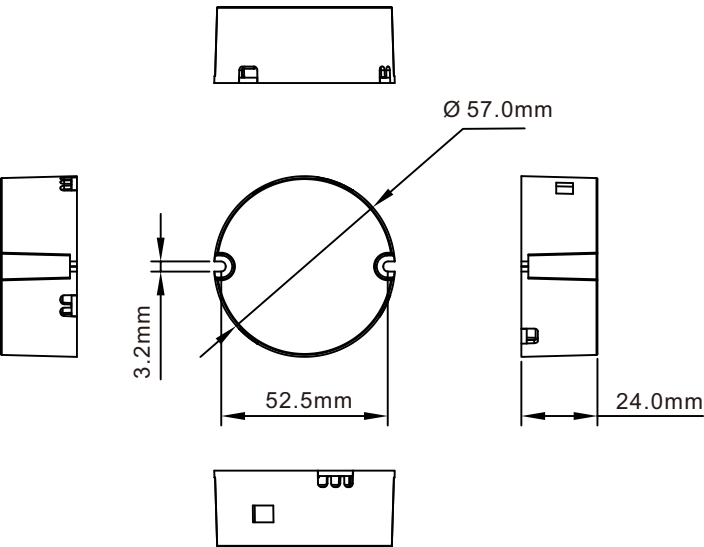
Notes: Wire length may vary $\pm 2-3$ mm due to manufacturing and manual measurement variations.

Function	Color	Wire Gauge	Wire Length	Tinned Length
ACL/DC+	Brown	28 AWG	113 mm	9-10 mm
ACN/DC-	Blue	28 AWG	113 mm	9-10 mm
LED+	Red	20 AWG	130 mm	7-8 mm
WW-	Black	20 AWG	130 mm	7-8 mm
CW-	White	20 AWG	130 mm	7-8 mm

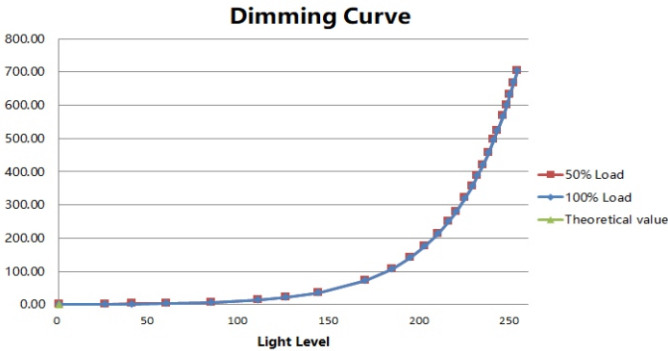
Operating window



Product Dimension

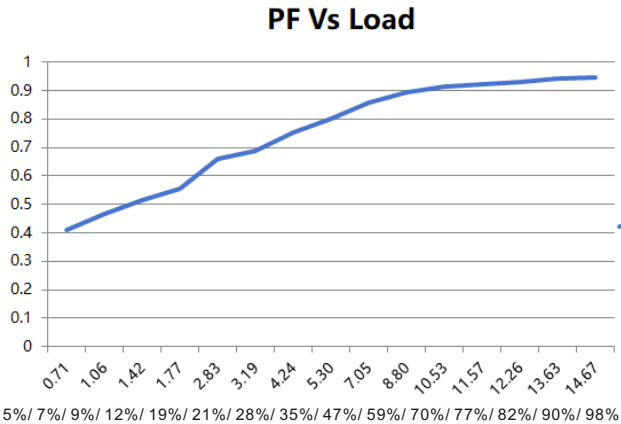


Dimming Curve



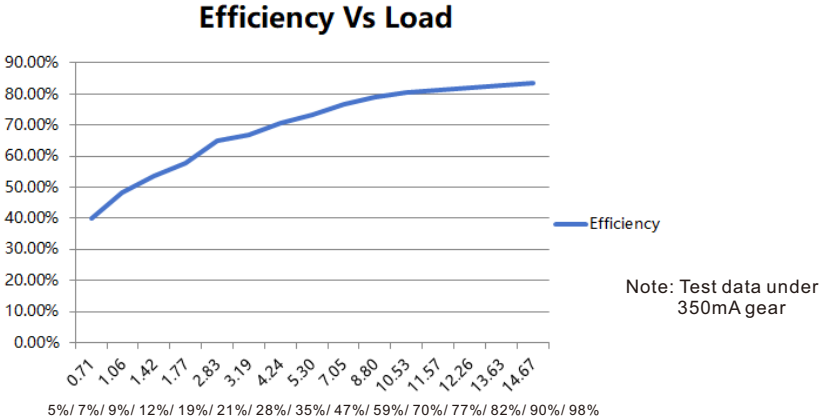
Note: Test data under 700mA gear

Driver Performance

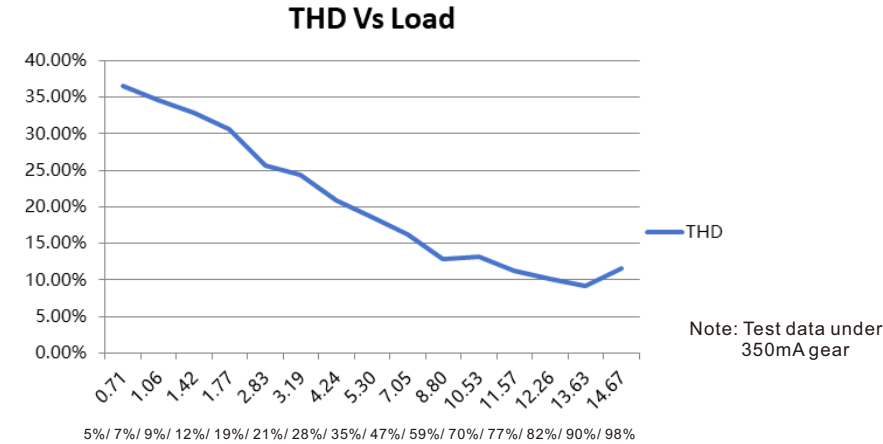


Note: Test data under 350mA gear

Driver Performance



Driver Performance



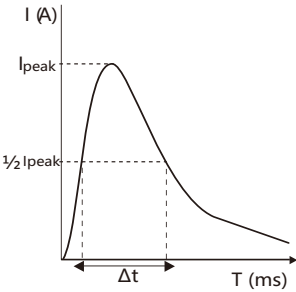
Expected Lifetime

Module Number	Output current	Ta	30 °C	40 °C	45 °C	•••	60 °C
SRPY-ZG9105N-15CC200-700	200 – 700 mA	Tc	50 °C	60 °C	70 °C	•••	90 °C
SRPY-ZG9105N-15CCT200-700	200 – 700 mA	Lifetime	> 100,000 h	> 80,000 h	> 60,000 h		> 40,000 h

The LED driver is designed for a lifetime stated above under reference conditions.
The relation of tc to ta temperature depends also on the luminaire design.

MCB Load Quantity

Module Number	Ipeak	Twidth	Max.quantity of LED Driver per MCB														
			B10	B13	B16	B20	B25	C10	C13	C16	C20	C25	D10	D13	D16	D20	D25
SRPY-ZG9105N-15CC200-700	4.66A	72μs	60	78	96	120	150	70	91	112	140	175	80	104	128	160	200
SRPY-ZG9105N-15CCT200-700	4.66A	72μs	60	78	96	120	150	70	91	112	140	175	80	104	128	160	200



- Note:
- Those MCB parameters are based on ABB S200 series circuit breakers.
 - For different brands and models of miniature circuit breakers, the quantity of drivers will have difference.
 - Please do not exceed the above-mentioned quantity during on-site installation, and the specific load quantity shall be subject to on-site installation.
 - When the installation environment temperature of MCBs exceeds 30°C or when multiple MCBs are installed side by side, the number of mounted drives will be reduced, which requires recalculation.
 - Type C MCB's are strongly recommended to use with LED lighting

Update log

Date	Version	Update content	Update by
2025-6-20	V1.0	Initial version	Romeo

Note: Subject to change without notice. Please contact us if you have any questions.