

80W DALI D4i DT6 NFC LED Driver(Constant Current)



Important: Read All Instructions Prior to Installation

Function introduction



Product Data

Output	LED Channel	1
	DC Voltage	10-54V, Max.60V
	Current	1000-2000mA via NFC setting; Min.current gear lower to 0.1mA
	Current Accuracy	±3%@ full load
	Rated Power	Max. 80W
Input	Voltage Range	120-277VAC
	Frequency Range	50/60Hz
	Power Factor (Typ.)	> 0.96 @ 230VAC Full load*
	Total Harmonic Distortion	THD ≤ 10% (@ full load / 230VAC)*
	Efficiency (Typ.)	> 82% @ 230VAC full load*
	AC Current (Typ.)	0.5A Max.
	Inrush Current (Typ.)	Max. 34.4A at 230VAC; 160μs duration
	Leakage Current	< 5mA /230VAC
	Standby Power Consumption	< 0.5W
	Anti Surge	L-N:2KV
Control	Dimming Interface	DALI Device Type 6 (DALI consumption < 2mA)/ AC Push
	Dimming Range	0.01%-100%@ Max current
	Dimming Method	Amplitude/CCR dimming
	Dimming Curve	Linear/ Logarithmic optional

Protection	Short Circuit	Yes, recovers automatically after fault condition is removed
	Over Current	Yes, recovers automatically after fault condition is removed
	Over Temperature	Yes, recovers automatically after temperature drop
Environment	Working Temp.	-25°C ~ +60°C
	Max. Case Temp.	TC=90°C
	Working Humidity	10% ~ 95% RH non-condensing
	Storage Temp. & Humidity	-40°C ~ +80°C, 10% ~ 95% RH
Safety & EMC	Safety Standards	EN61347-1, EN61347-2-13, GB/T 19510.1-2023, GB/T 19510.213-2023
	Withstand Voltage	I/P-O/P: 3.75KVAC
	Isolation Resistance	I/P-O/P: 100M Ohms / 500VDC / 25°C / 70% RH
	EMC Emission	EN55015, EN61000-3-2, EN61000-3-3, GB 17625.1-2022, GB/T 17743-2021
	EMC Immunity	EN61547, EN61000-4-2,3,4,5,6,8,11
Others	MTBF	191350H, MIL-HDBK-217F @ 230VAC full load and 25°C ambient temperature
	Dimension	355x30x21mm (L*W*H)
	Warranty	5 Years

DALI Infos

Parameter	Min.	Typ.	Max.
DALI Interface Standard	IEC62386-101, 102, 207, 250, 251, 252, 253		
Dimming Range	0.1%	Logarithmic (default)	100%
DA1, DA2 High Level	9.5V	16V	22.5V
DA1, DA2 Low Level	-6.5V	0	6.5V
DA1, DA2 Current	0		2mA
Bus Power Supply Voltage	12Vdc	16Vdc	22Vdc
Bus Power Supply Current	/	55mA	60mA

- *: PF/THD/Eff shall be different per different testing setup and equipment.
- In compliance with IEC 62386-101:2014, IEC 62386-102:2014, IEC 62386-207 Ed2
 - Built-in DALI-2 interface, DALI DT6 device
 - Dimmable LED driver with linear metal housing. Max. output power 80W
 - 1000-2000mA current selectable via NFC program tool. Min.current gear lower to 0.1mA
 - DALI Address/Group/Scene setting via NFC program tool.
 - Class II power supply, isolated design
 - High power factor and efficiency
 - To switch and dim LED lighting luminaries
 - Amplitude/CCR dimming, smooth and deep dimming
 - Compatible with universal DALI masters that support DT6 commands
 - DALI-250/251/252/253 Enabled, DALI data inside.
 - IP20 rating, suitable for indoor LED lighting applications
 - 5 years warranty

Operation

With DALI master

1. DALI Address

1 DALI address for 1 channel output is assigned by DALI Master controller automatically, please refer to user manuals of compatible DALI Masters for specific operations.

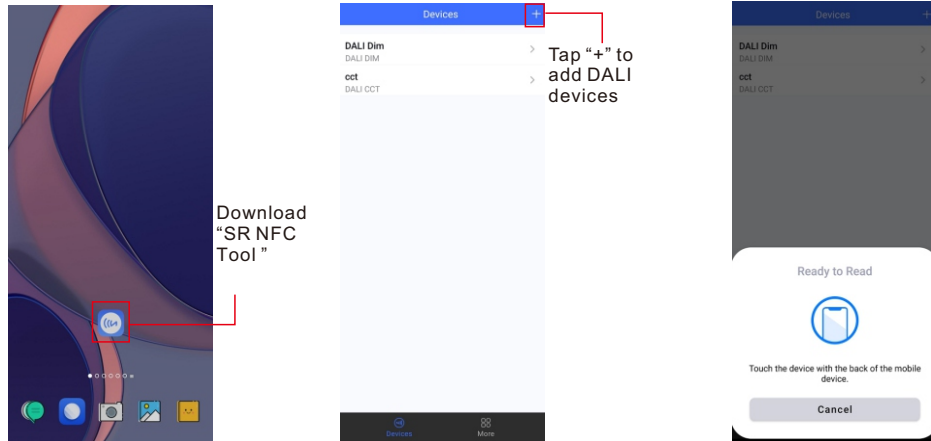
With NFC Programming devices

Note

- 1) Do wiring according to the wiring diagram and power on the DALI system .
- 2) Recommend setting parameters without power-on the DALI devices .
- 2) Please make sure your mobile phone has NFC function and enable it .

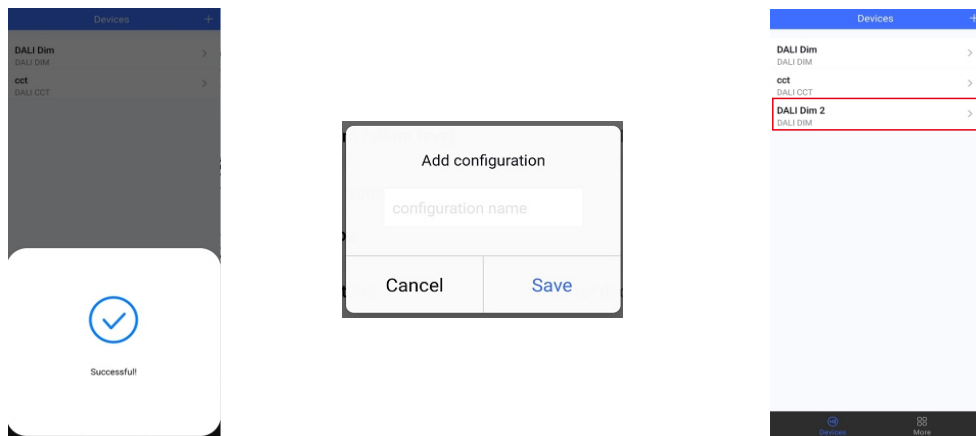
Working with “SR NFC Tool” APP

Step 1: Download the APP (searching “SR NFC Tool” from App Store and Google Play) . Then open the APP .

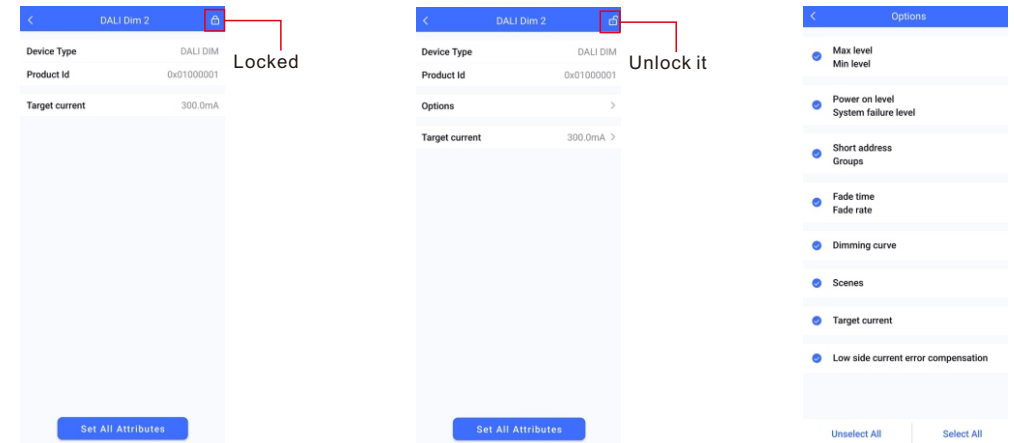


- Note:**
1. Please Make sure that you have enabled NFC function with your mobile phone/ tablet .
 2. Please Make sure that the “NFC position” is matched.
 3. Please do not power on the device before setting.
 4. If you can't download “SR NFC Tool”. Please contact with us.

Step 2: Add device, and name it as you wish.

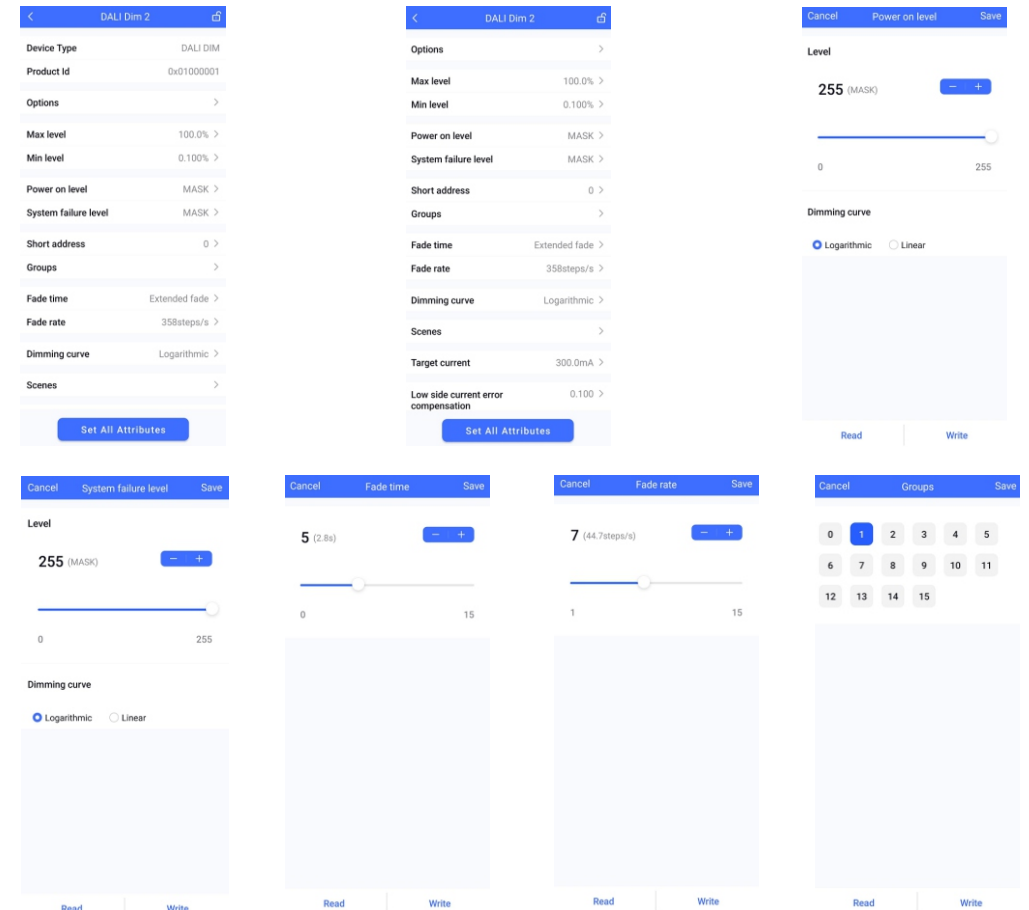


Step 3: Unlock device, enter parameters configuring page.

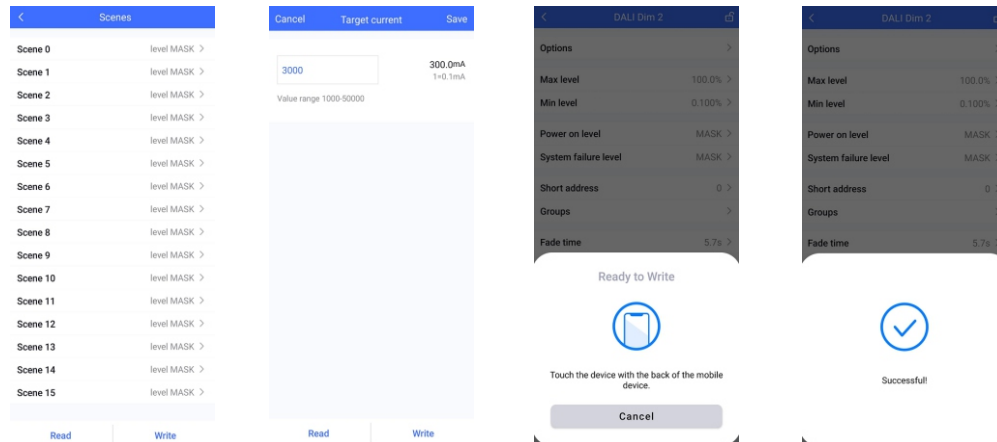


- Note:**
1. You have to unlock the device then do some settings
 2. Only when the corresponding function is selected, the function interface will be displayed.

Step 4: Few parameter interface, you can choose the setting based on your requirements.



Step 5: After setting, please save the selected configuration via NFC and power on the device.

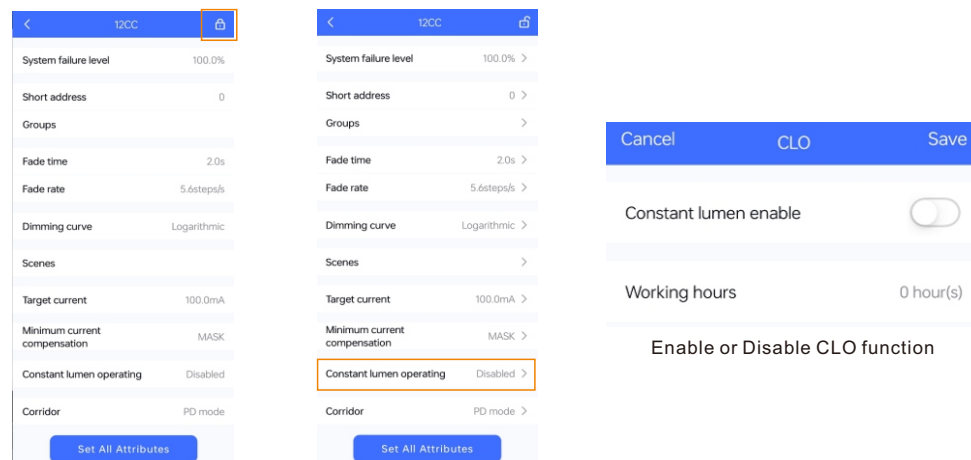


Tips

1. NFC function doesn't require any power driver.
2. Many functions can be configured by NFC. Kindly check your desired functions.
3. All of our DALI drivers are in the best performance within our DALI master/ gateway.

CLO AND CORRIDOR DIM(CD) FUNCTION INSTRUCTION

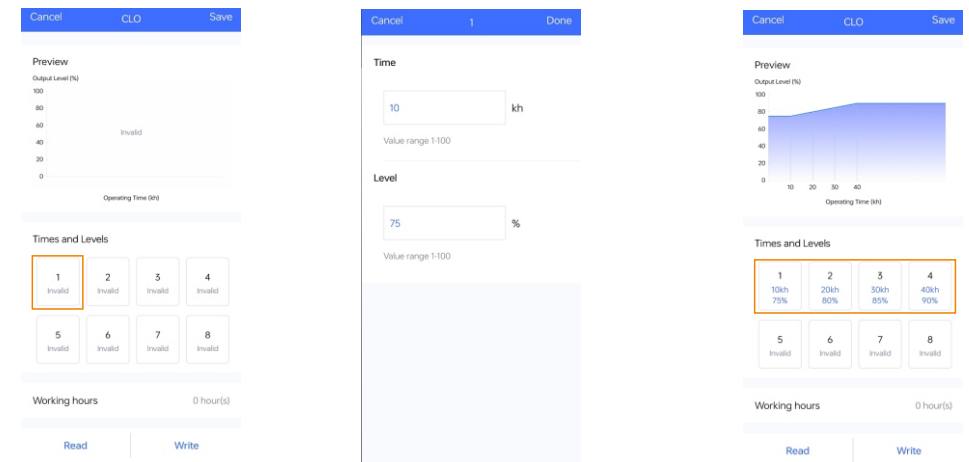
1.Open APP, and Find the CLO/CD functions



Read From the NFC Driver

Unlock it,and Click here to enter CLO settings

2.Enter CLO Setting homepage



Enable CLO function

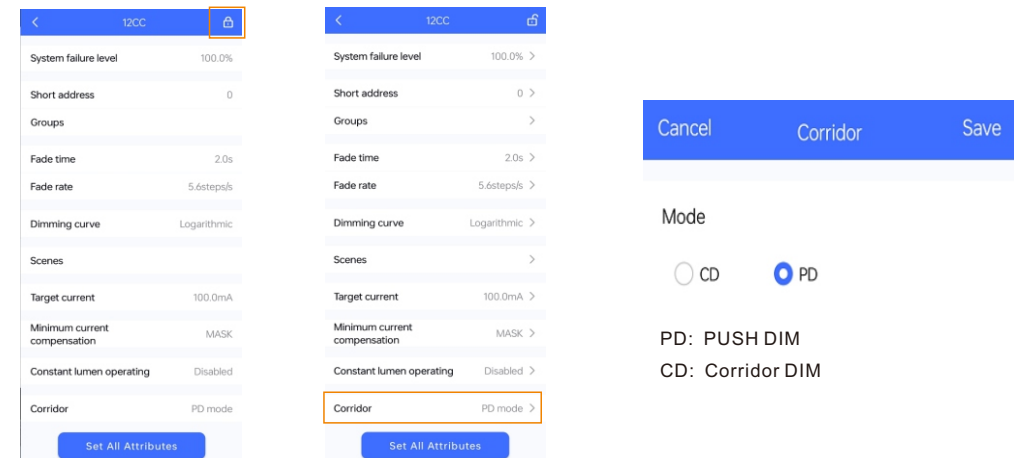
Click "1",and set its time and level

Set your desired time and levels.
Graphic display

Tips:

Working hours : Ability to calculate the working hours of a single driver.

3.Corridor dim(CD) function



Read From the NFC Driver

Unlock it,and Click here to enter Corridor mode

4. Enter CD Setting homepage

CancelCorridorSave

Mode
☒ CD ☐ PD

Preview
Level (%)
100
80
60
40
20
0
Fade in Occupied Fade out Prolonged Dim to off

Fade in time
5 s
Value range 0-100

Occupied time
120 s
Value range 0-60,000

Occupied level
100 %
Value range 0-100

Fade out time
5 s
Value range 0-100

Prolonged time
60 s
Value range 0-60,000

Prolonged level
☐ Infinite
20 %
Value range 0-100

Dim to off time
5 s
Value range 0-100

ReadWrite

CancelCorridorSave

Occupied time
120 s
Value range 0-60,000

Occupied level
100 %
Value range 0-100

Fade out time
5 s
Value range 0-100

Prolonged time
60 s
Value range 0-60,000

Prolonged level
☐ Infinite
20 %
Value range 0-100

Dim to off time
5 s
Value range 0-100

ReadWrite

CancelCorridorSave

Prolonged time
60 s
Value range 0-60,000

Prolonged level
☐ Infinite
20 %
Value range 0-100

Dim to off time
5 s
Value range 0-100

ReadWrite

Enter CD mode

Tips:

1. You should select either CD mode or PD mode, but not both.
2. Under CD mode, you can realize it with normal (3rd party) AC sensor.
3. Default mode: PD mode.

Additional Remarks

More

Write Consecutively ☐

Advanced >

App Version 1.0.10

Check for Update >

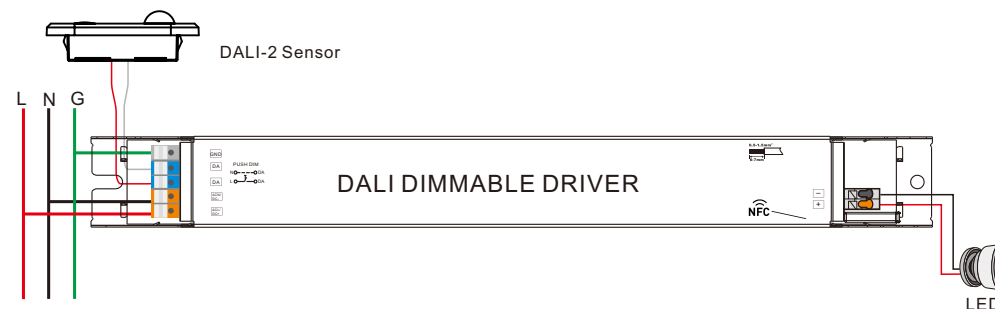
Privacy Policy >

Configurations More

1. Please make sure your APP version is 1.0.10 or higher.
2. Please make sure NFC driver's firmware is available with CLO / CD functions.

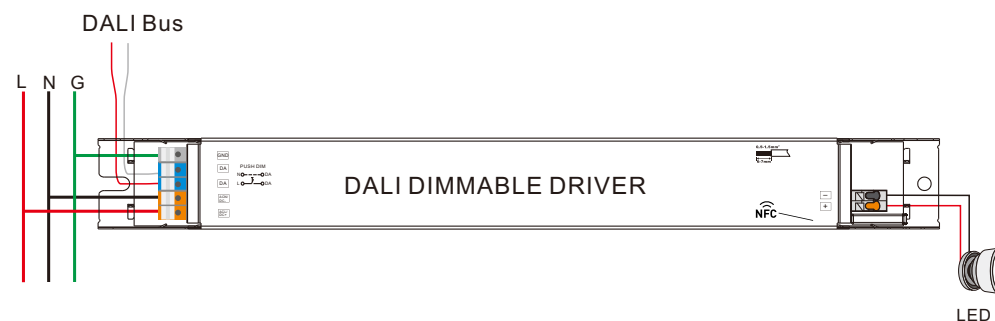
Wiring Diagram

1. As a D4i Driver

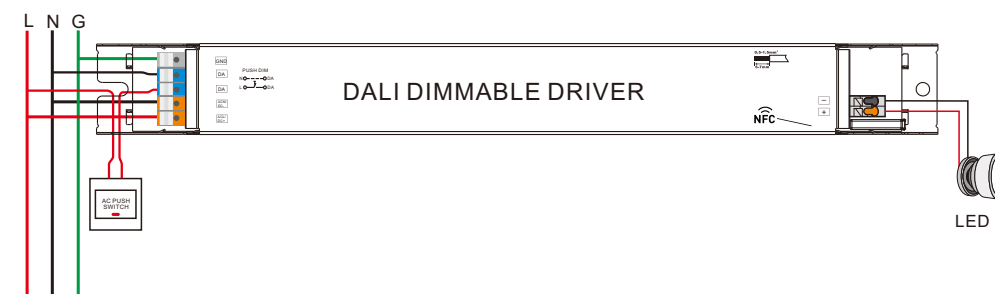


2. As a Normal DALI driver.

2.1 With DALI bus



2.2 With PUSH dimmer



AC Push Function

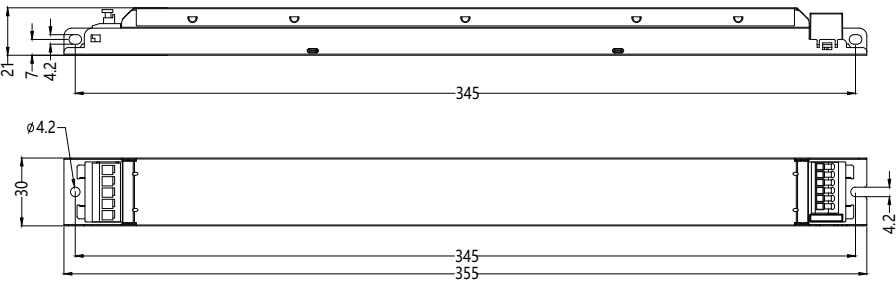
- 1) Click the button to switch ON/OFF
- 2) Press and hold down the button to increase or decrease light intensity to desired level and release it, then repeat the operation to adjust light intensity to opposite direction. The dimming range is from 1% to 100%.

Safety & Warnings

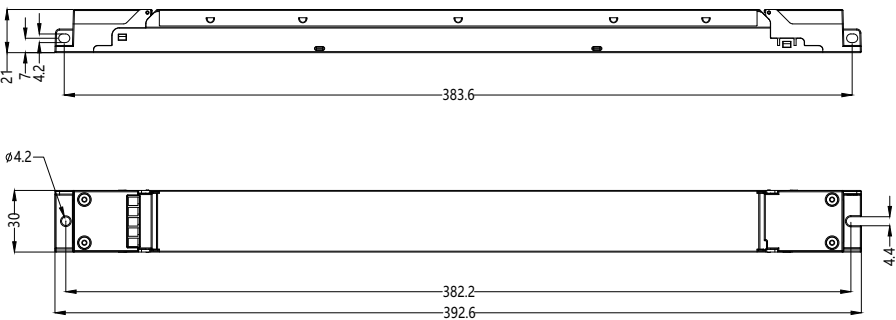
- DO NOT install with power applied to the device.
- DO NOT expose the device to moisture.

Product Dimension

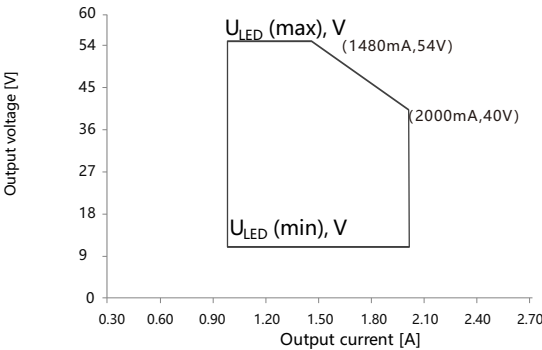
Without End Cap



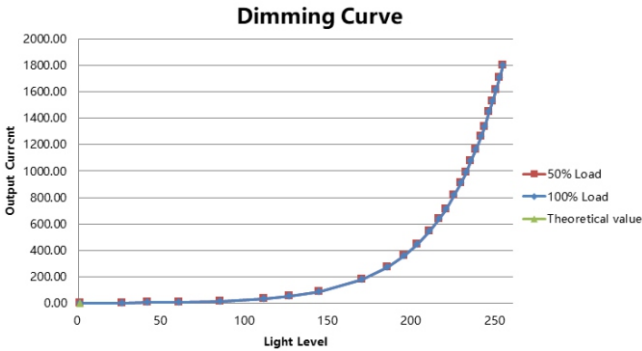
With End Cap



Operating window



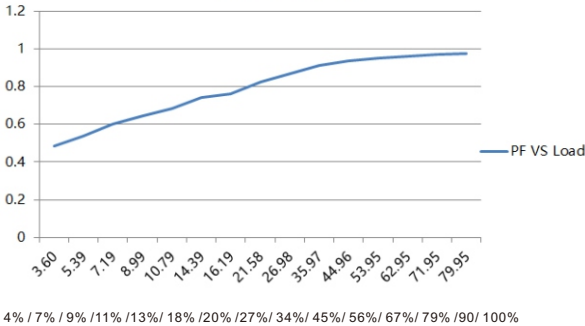
Dimming Curve



Note: Test data under 1800mA gear

Driver Performance

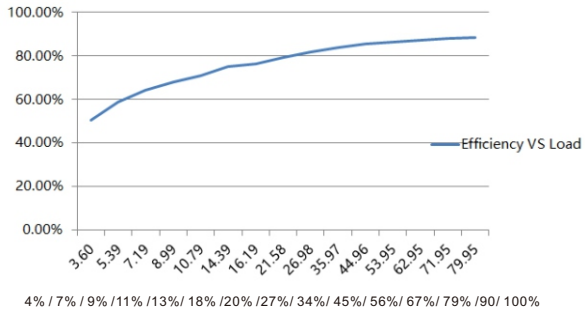
PF VS Load



Note: Test data under 1800mA gear

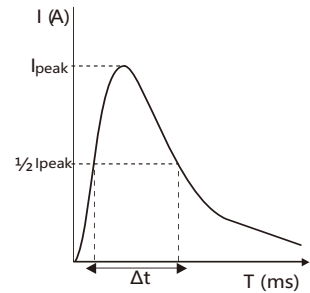
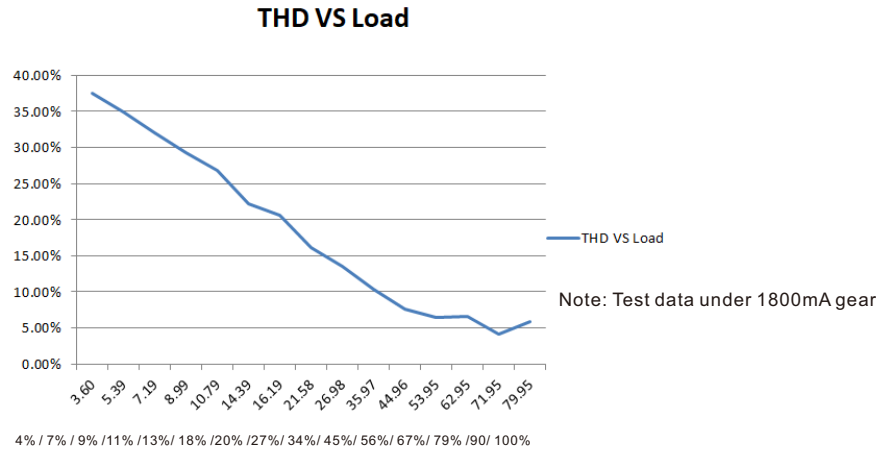
Driver Performance

Efficiency VS Load



Note: Test data under 1800mA gear

Driver Performance



- Note:
- 1.Those MCB parameters are based on ABB S200 series circuit breakers.
 - 2.For different brands and models of miniature circuit breakers, the quantity of drivers will have difference.
 - 3.Please do not exceed the above-mentioned quantity during on-site installation, and the specific load quantity shall be subject to on-site installation.
 - 4.When the installation environment temperature of MCBs exceeds 30°C or when multiple MCBs are installed side by side, the number of mounted drives will be reduced, which requires recalculation.
 - 5.Type C MCB's are strongly recommended to use with LED lighting

Expected Lifetime

Module Number	Output current	Ta	30 °C	40 °C	45 °C	•••	60 °C
SRPL-2305iN-80CC1000-2000U	1000 – 2000 mA	Tc	60 °C	70 °C	76 °C	•••	90 °C(max)
SRPL-2309iN-80CCT1000-2000U	1000 – 2000 mA	Lifetime	> 100,000 h	> 80,000 h	> 50,000 h		> 20,000 h

The LED driver is designed for a lifetime stated above under reference conditions .
The relation of tc to ta temperature depends also on the luminaire design.

MCB Load Quantity

Module Number	Ipeak	Twidth	Max.quantity of LED Driver per MCB														
			B10	B13	B16	B20	B25	C10	C13	C16	C20	C25	D10	D13	D16	D20	D25
SRPL-2305iN-80CC1000-2000U	34.4A	160μs	12	15	19	24	30	16	20	25	31	39	18	23	28	36	44
SRPL-2309iN-80CCT1000-2000U	34.4A	160μs	12	15	19	24	30	16	20	25	31	39	18	23	28	36	44

Update log

Date	Version	Update content	Update by
2023-9-1	V1.5	Parameter Update	Romeo

Note: Subject to change without notice. Please contact us if you have any questions.