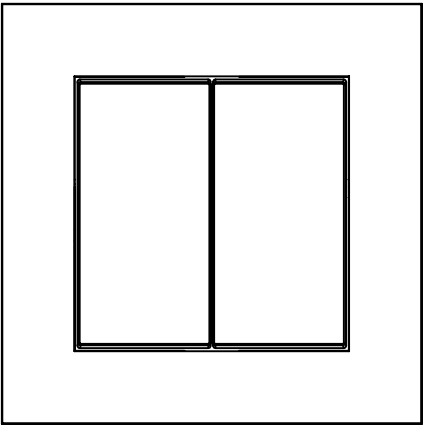


# Battery Powered Configurable Zigbee GP Switch



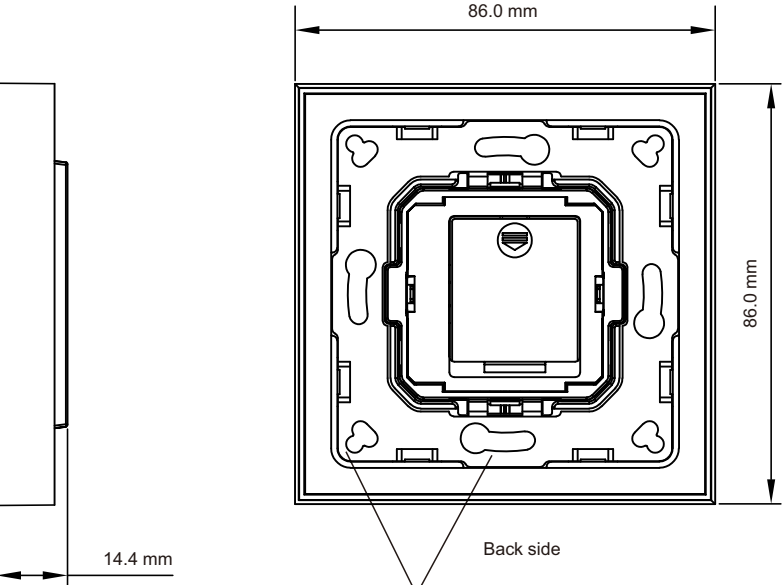
**Important:** Read All Instructions Prior to Installation

## Function introduction



Front side

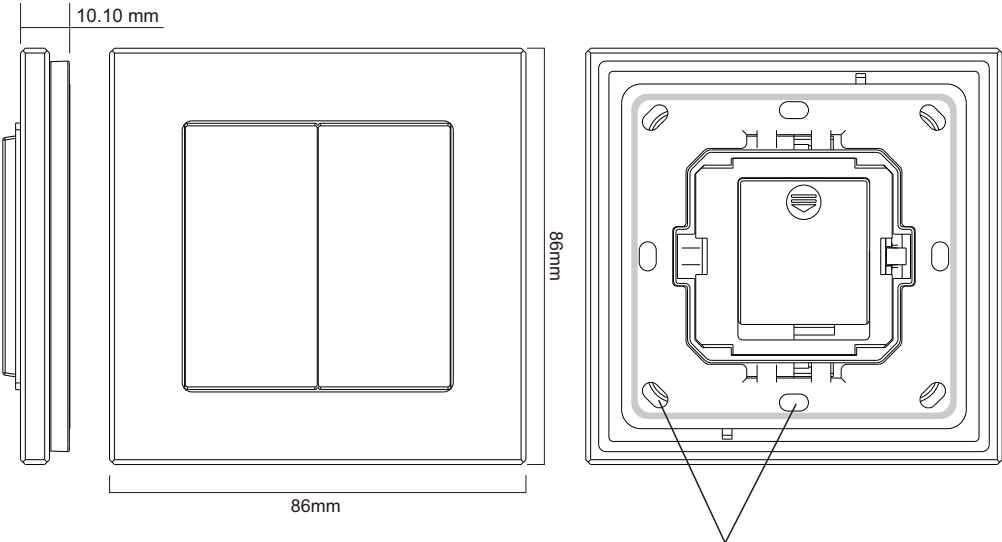
## With Plastic Frame



The remote control can be fixed on the wall with 3M glue or screw.

70100041

## With Glass Frame



The remote control can be fixed on the wall with 3M glue or screw.

## Product Data

Switch Type	Configurable Zigbee GP Switch
Transmission Range	10-30m (typical)
Radio Frequency	2.4GHz
Power Supply	3V(1xCR2430 battery)
Buttons	4
Dimensions	86x86x14.4mm
Operating Temperature	-20 °C ~ +45 °C
Working Humidity	10% ~ 95% RH non-condensing
Waterproof Grade	IP20
Warranty	5 years

## Product Description

The configurable Zigbee GP switch is a wireless transmitter that communicates with compatible Zigbee hub. The switch uses a CR2430 battery that powers a built-in transmitter. This transmitter sends wireless radio signals that are used to remotely control the compatible Zigbee system.

The switch can be configured through Zigbee App after added to the Zigbee hub. This switch has four buttons to trigger different actions of designated devices or zones with 3 events: short press, double click, long press. Action of each event and controlled object of each button can be configured through Zigbee App.

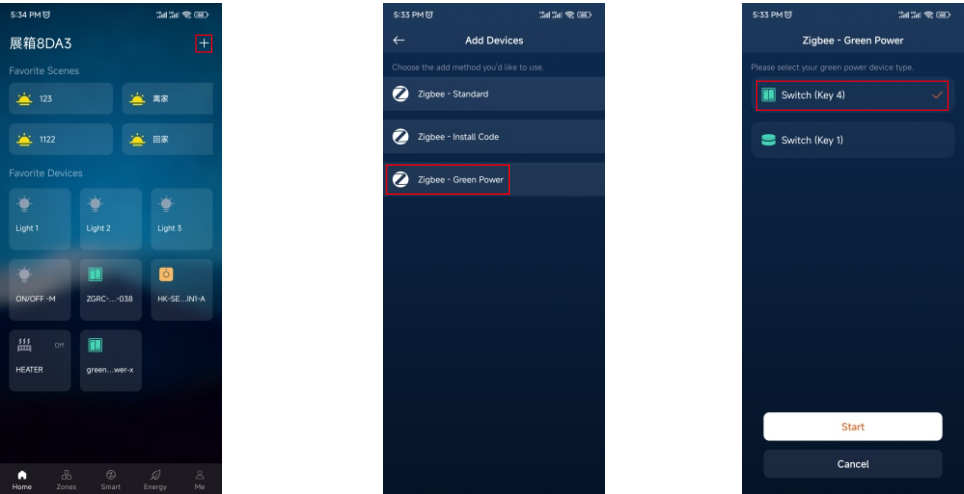
## Safety & Warnings

- DO NOT expose the device to moisture.

Operations

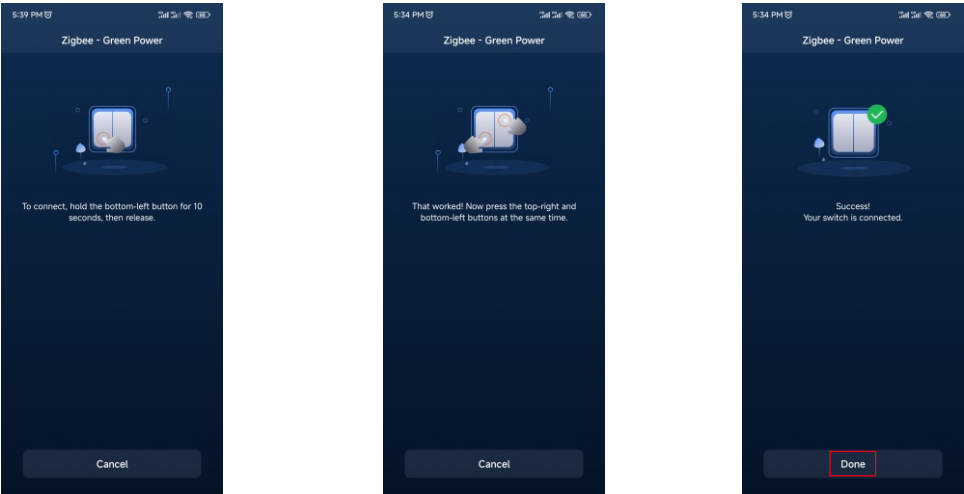
1. Add the Switch to a Compatible Zigbee Hub (For instance Azoula Smart Hub and Azoula Smart App)

Step 1: tap on "+" button on "Home" page, then tap on "Zigbee-Green Power" to add Green Power switch.

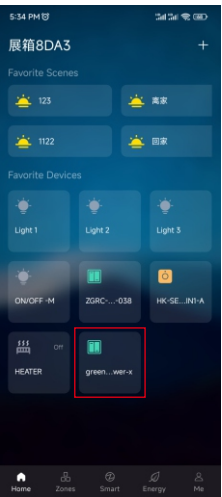


Step 2: tap on "Switch (Key 4)", then tap on "Start" button to add 4 key Green Power switch.

Step 3: Follow the instructions of the App to operate the switch and add it to the App.



Step 4: Once added successfully, tap on "Done" button to finish adding.

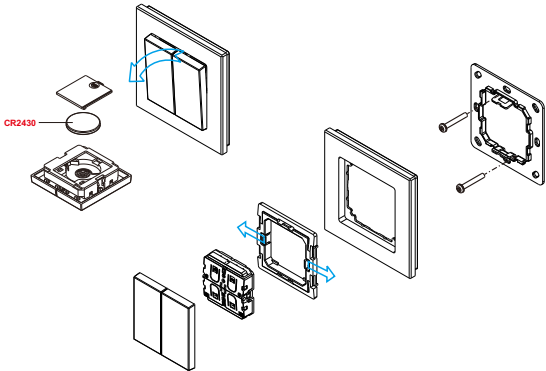


Step 5: The added switch will be shown on the "Home" Page.

2. Configure the switch through a Compatible Zigbee Hub (For instance Azoula Smart Hub and Azoula Smart App)

After the switch is added to the hub, navigate to "Smart" Page of the Azoula Smart App and you can use the switch to set "Automation". Please refer to the user manual of Azoula Smart Hub to learn how to set automation using green power switch.

Installation



The key part of this controller is a universal, extremely rotary standard switch element that can be integrated in numerous frames by different manufactures as below list:

BERKER	S1, B1, B3, B7 glass
GIRA	Standard55, E2, Event, Esprit
JUNG	A500, Aplus
MERTEN	M-smart, M-Arc, M-Plan


Battery Warnings & Safty

Warnings and Statements:

This product contains a CR Coin Cell Lithium Battery and meets the requirements of the **16 CFR Part 1263**. For your safety and to ensure proper operation, please carefully read and understand the following warnings and statements.

⚠️ WARNING

- **INGESTION HAZARD:** This product contains a button cell or coin battery.
- **DEATH** or serious injury can occur if ingested.
- A swallowed button cell or coin battery can cause **Internal Chemical Burns** in as little as **2 hours**.
- **KEEP** new and used batteries **OUT OF REACH of CHILDREN**
- **Seek immediate medical attention** if a battery is suspected to be swallowed or inserted inside any part of the body.



Statements:

- INDOOR USE ONLY
- Remove and immediately recycle or dispose of used batteries according to local regulations and keep away from children. Do NOT dispose of batteries in household trash or incinerate.
- Even used batteries may cause severe injury or death.
- Call a local poison control center for treatment information.
- Do not install any battery other than CR2430 or its equivalent.
- Ensure the CR2430 operates at the nominal battery voltage (3VDC).
- Non-rechargeable batteries are not to be recharged.
- Do not force discharge, recharge, disassemble, heat above (manufacturer's specified temperature rating) or incinerate. Doing so may result in injury due to venting, leakage or explosion resulting in chemical burns.
- Ensure the batteries are installed correctly according to polarity (+ and -).
- Do not mix old and new batteries, different brands or types of batteries, such as alkaline, carbon-zinc, or rechargeable batteries.
- Remove and immediately recycle or dispose of batteries from equipment not used for an extended period of time according to local regulations.
- Always completely secure the battery compartment. If the battery compartment does not close securely, stop using the product, remove the batteries, and keep them away from children.
- If the battery leaks, do not touch or smell it, wipe the leakage from the battery compartment, and then replace the battery with a new one.
- If a battery leaks and the material contacts your skin or clothing, flush the exposed area thoroughly with running water. In case of eye contact, flush thoroughly with copious amounts of clean running water and seek immediate medical assistance.

Battery information:

Battery	Battery Type	Operation Voltage	Diameter
CR2430	Button Cell	3VDC	24.5mm(0.965inch)