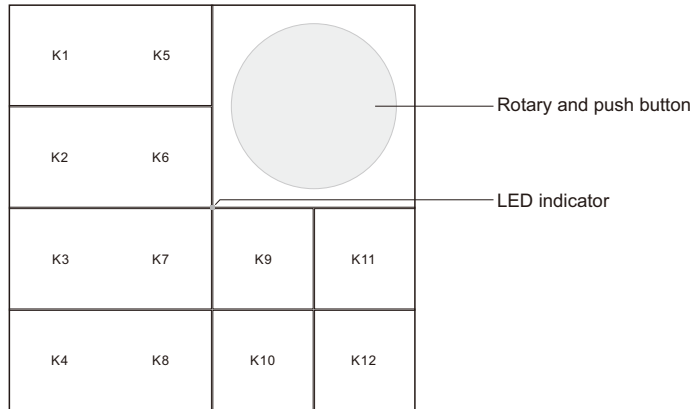


Zigbee Smart Wall Panel Remote



Important: Read All Instructions Prior to Installation
Function introduction



Product Data

- Smart zigbee 3.0 standard remote with 12 push keys and 1 rotary
- ALL keys and rotary function can be customized through Azoula APP
- Battery powered with low power consumption
- Wall-mounted, easy installation with 3M glue sticker or screws
- Devices, zones, and scenes control can be binded with the remote
- Standard 86x86mm size

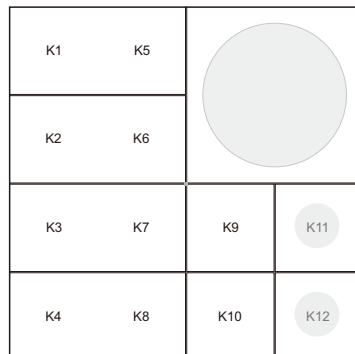
Protocol	ZigBee 3.0
Operation Voltage	6VDC (2xCR2032)
Transmission Frequency	2.4GHz
Transmission Range (free field)	30m
Dimension	86x86x20.5mm
Waterproof Grade	IP20

Network pairing/reset

Short press **K11** and **K12** 3 times at the same time, The red LED indicator will flash. The remote will enter network pairing mode or reset mode.

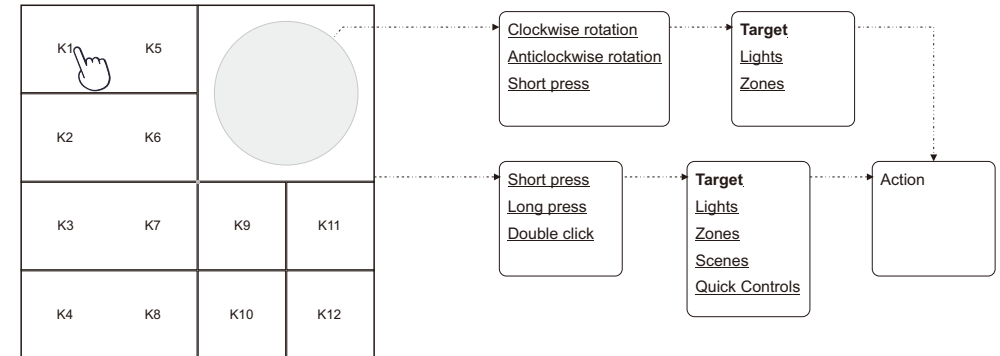
If the panel had not been added into a gateway before, it will be found and added into the network, or the state will last for 3 minutes.

If the remote had been added into a network before, it will be removed from the network and into network pairing mode again.



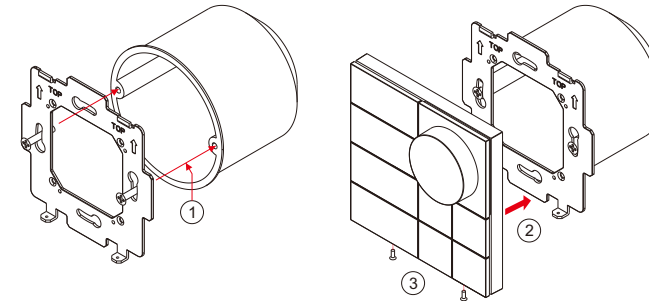
Keys and rotary function setting

After adding the panel into Azoula, then you can choose and tap each button or rotary to customize the function

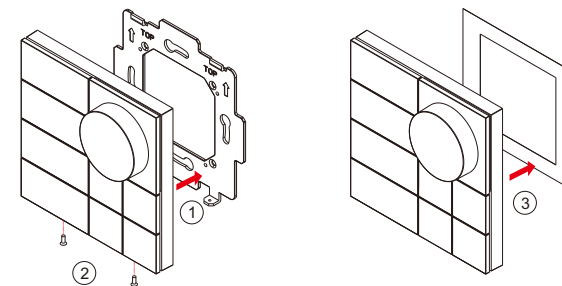


Installation

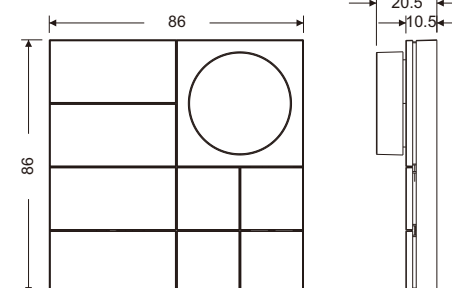
1) Install with screw



2) Install with 3M glue sticker



Product Size




Battery Warnings & Safty

Warnings and Statements:

This product contains a CR Coin Cell Lithium Battery and meets the requirements of the **16 CFR Part 1263**. For your safety and to ensure proper operation, please carefully read and understand the following warnings and statements.

⚠ WARNING

- **INGESTION HAZARD:** This product contains a button cell or coin battery.
- **DEATH** or serious injury can occur if ingested.
- A swallowed button cell or coin battery can cause **Internal Chemical Burns** in as little as **2 hours**.
- **KEEP** new and used batteries **OUT OF REACH of CHILDREN**
- **Seek immediate medical attention** if a battery is suspected to be swallowed or inserted inside any part of the body.



Statements:

- INDOOR USE ONLY
- Remove and immediately recycle or dispose of used batteries according to local regulations and keep away from children. Do NOT dispose of batteries in household trash or incinerate.
- Even used batteries may cause severe injury or death.
- Call a local poison control center for treatment information.
- Do not install any battery other than CR2032 or its equivalent.
- Ensure the CR2032 operates at the nominal battery voltage (3VDC).
- Non-rechargeable batteries are not to be recharged.
- Do not force discharge, recharge, disassemble, heat above (manufacturer's specified temperature rating) or incinerate. Doing so may result in injury due to venting, leakage or explosion resulting in chemical burns.
- Ensure the batteries are installed correctly according to polarity (+ and -).
- Do not mix old and new batteries, different brands or types of batteries, such as alkaline, carbon-zinc, or rechargeable batteries.
- Remove and immediately recycle or dispose of batteries from equipment not used for an extended period of time according to local regulations.
- Always completely secure the battery compartment. If the battery compartment does not close securely, stop using the product, remove the batteries, and keep them away from children.
- If the battery leaks, do not touch or smell it, wipe the leakage from the battery compartment, and then replace the battery with a new one.
- If a battery leaks and the material contacts your skin or clothing, flush the exposed area thoroughly with running water. In case of eye contact, flush thoroughly with copious amounts of clean running water and seek immediate medical assistance.

Battery information:

Battery	Battery Type	Operation Voltage	Diameter
CR2032	Button Cell	3VDC	24.5mm(0.965inch)

Disposing of used batteries:

- When disposing of used batteries, please comply with governmental regulations or environmental public institutions' rules that apply in your country/area.
- Note and follow the **STATEMENTS** in **WARNINGS AND STATEMENTS**.