



Technology Partner
SILVAIR

Work with Silvair

BLE Dimmer Wallstation with 0-10V Output

SR-SV2835PAC-V(US)

Features

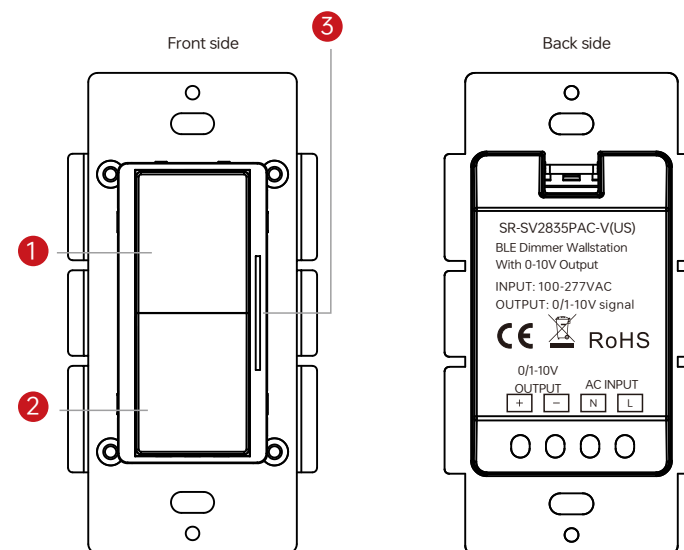
- Dimmer Wallstation with 0-10V output based on Bluetooth® Mesh network
- 100-277VAC powered, built-in 20mA signal output
- On/off, Dimming function through manual control and wireless control
- Mounts in standard wallbox
- Mesh network for further control distance, receivers can transmit signal to each other
- 2.4 GHz global operation
- Transmission range between every two neighbor devices up to 30m
- Standard size, compatible with existing US size frame
- Working with our BLE driver, controller, signal converter, sensor series product
- UL listed, UL 2043 Plenum Rated
- IPEX antenna
- Waterproof grade: IP20
- 5 years warranty



Parameters

Protocol	Bluetooth® mesh
Power Supply	100-277VAC
Output	0-10V Signal (20mA)
Transmission Frequency	2.4GHz
Transmission Range(Open Field)	Min. 30m
Protection Type	IP 20
Dimming Range	0.1%-100%
Dimensions	54.7x105.5x39.8mm

Product info



Click to turn on(100%), press and hold down to increase light intensity.
Double click: 20% brightness increase per gear.

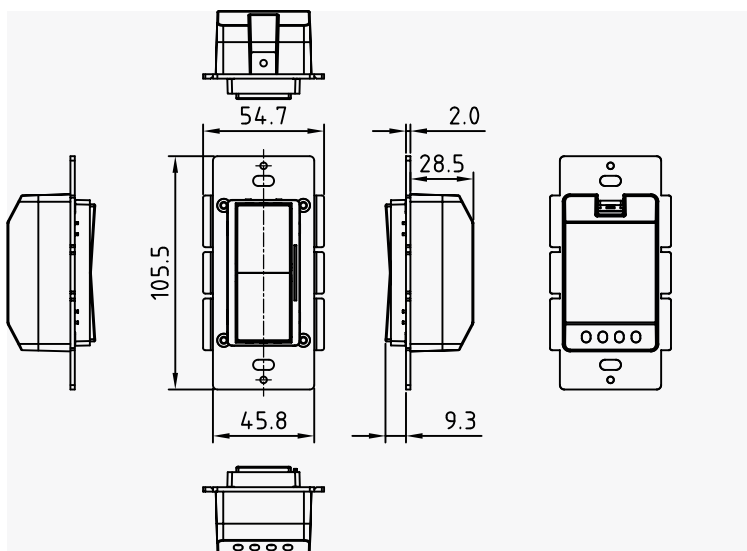
Click to turn off(0%), press and hold down to decrease light intensity.
Double click: 20% brightness decrease per gear.

Indicator light: Light intensity can be displayed here.

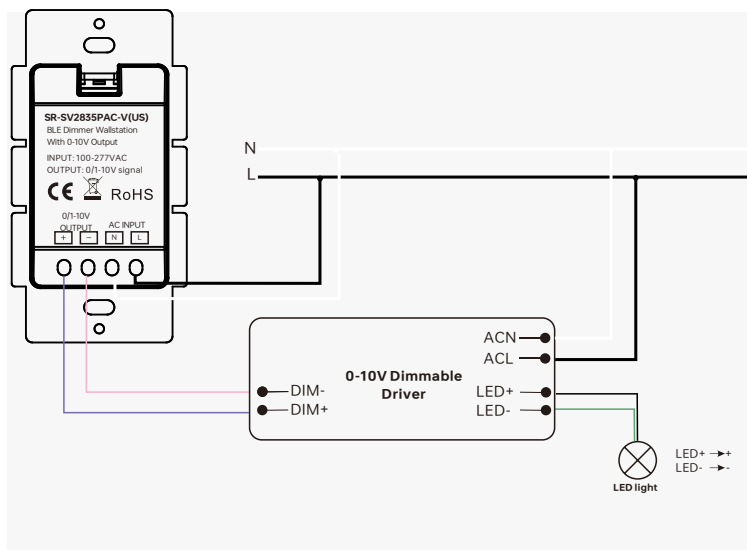


BLE Dimmer Wallstation with 0-10V Output SR-SV2835PAC-V(US)

Dimension



Wiring

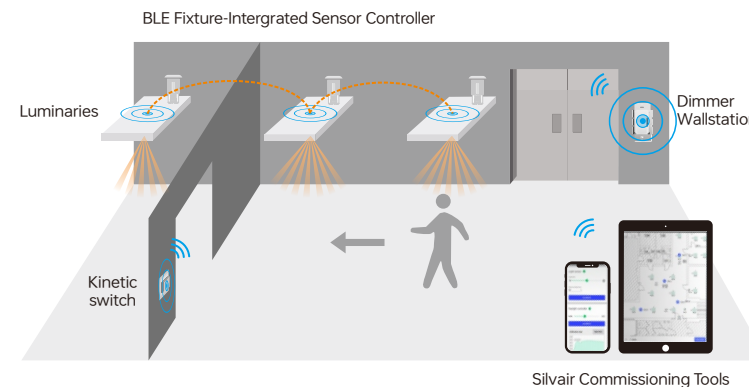


Technology Partner
SILVAIR

Work with Silvair



Application



Specification

COMFORT & CONVENIENCE

- Low/High-end trimming
- Manual control
- Cost-effective solution for energy savings
- Auto and advanced demand response programs
- Zone linking
- Working with 0-10V dimmable drivers

ENVIRONMENT & APPROBATION

- Operating temperature: -20°C to 55°C
- Agency approbations: CE/RoHS/UL Listed...
- Warranty: 5 years



BLE **Dimmer Wallstation with 0-10V Output**
SR-SV2835PAC-V(US)

Technology Partner
SILVAIR Work with Silvair



Warning

- DO NOT expose the device to moisture.

Operation

- Kindly refer to “Silvair Commissioning User Manual” for further pairing.
- Quick press “UP” button 3 times, and then quick press “Down” button 3times, after few seconds, reflash the device interface on the APP, when the text below shows “connecting to mesh”, means it has been withdrawn from APP.

Update Log

Date	Version	Update Content	Update by
2023-6-26	V1.3	Parameter Update	Romeo



Subject to change without notice. Please contact us if you have any questions.