



Technology Partner
SILVAIR

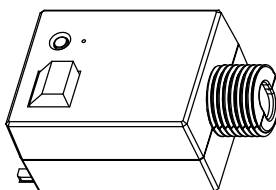
Work with Silvair

BLE to 0/1-10V Power pack with 5A Relay & 24V Aux

SR-SV2421-5A-AUX

Features

- Bluetooth to 0-10V signal converter, Bluetooth® mesh network
- Built-in 25mA 0-10V signal output, with 5A relay
- Built-in Sensor input, allow to using 3rd party sensor in logic signal to control the power pack/0-10V Load.
- Mesh network, which has a much longer control distance, transmits received signals to neighboring devices
- All devices on 0-10V line are broadcast controlled by Silvair Commissioning tools
- Supporting Sunricher kinetic energy switches and EnOcean switches EWSSB and EWSDB
- UL listed, Category: PAZX (Management Equipment, Energy). UL 2043 Plenum Rated
- IPEX antenna
- Waterproof grade: IP20
- 5 years warranty



Single-node Control :
≥70m (230ft)

Mesh-range in Between:
≥60m (197ft)

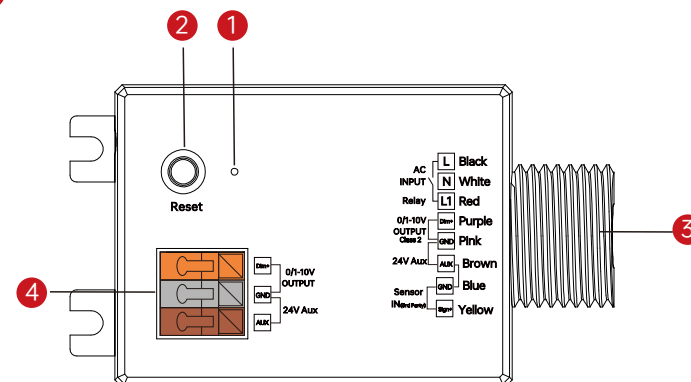


Parameters

Input	Power	100-277VAC
	Signal	Bluetooth
Output, 0/1-10V	Current	Max. 25mA
Output, Relay	Switching Voltage	100-277VAC
	Current	Max. 5A
Environment	Operating Temperature	0°C-+40°C
	Relative Humidity	8% to 80%
Others	Size	78.2*43.4*31.7mm
Relay Ratings		
Load Type	100-277VAC Signal Converter with 5A Relay, SR-BL2421-SVVT	
AC General Use	5A@120-277VAC	
Resistive	5A@120VAC, 5A@277VAC	
Capacitive	3A@120-277VAC	
Motor	0.5 HP@120VAC, 1 HP@250VAC	

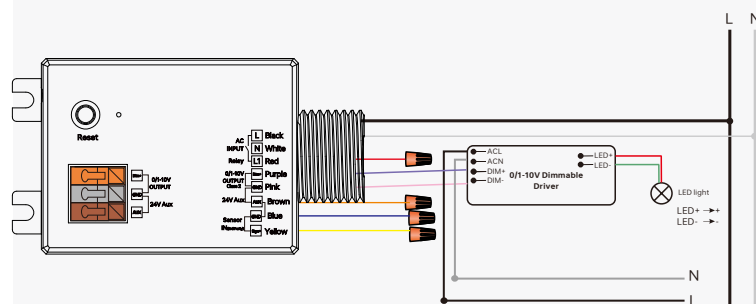
Product info

- 1 **LED indicator:** When controller is added to the network, the indicator light flashes slowly.
- 2 **Reset Key:** Press it to help withdraw the device from the internet/APP. Quick flash.
- 3 **Leads Output:** 18AWG for power line; 22AWG for dimming(signal)/AUX line
- 4 **Push Terminals:** Quick connection to smart sensor.

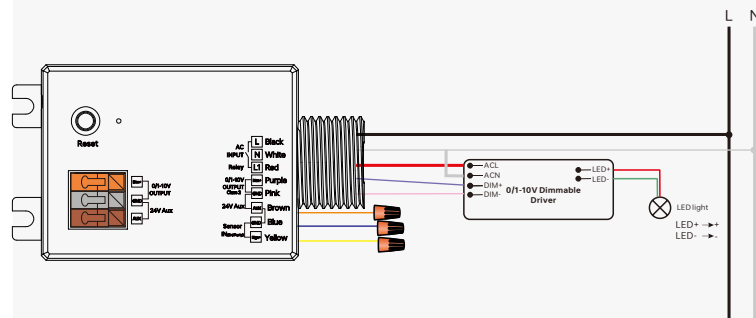


Wiring

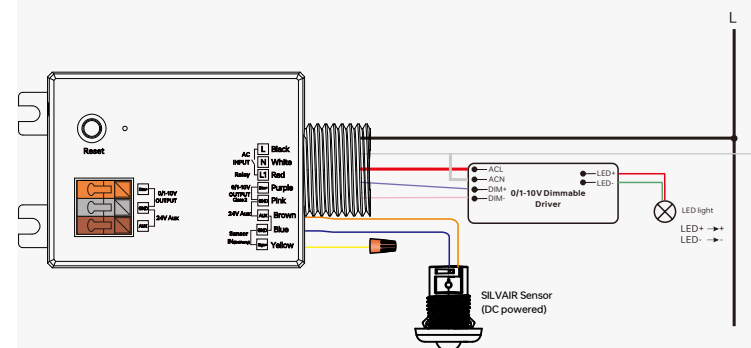
1) 0-10V Dimming Without Relay & Sensors



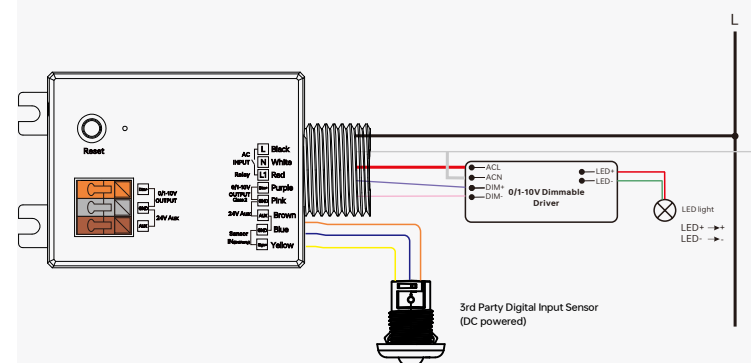
2) 0-10V Dimming With Relay



3) 0-10V Dimming With Relay and SILVAIR sensors



4) 0-10V Dimming With Relay and 3rd party sensors





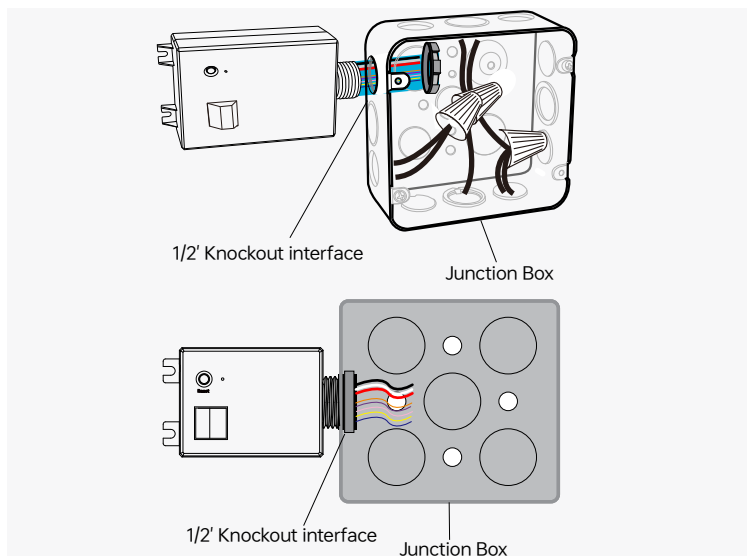
BLE to 0/1-10V Power pack with 5A Relay & 24V Aux SR-SV2421-5A-AUX

Technology Partner
SILVAIR

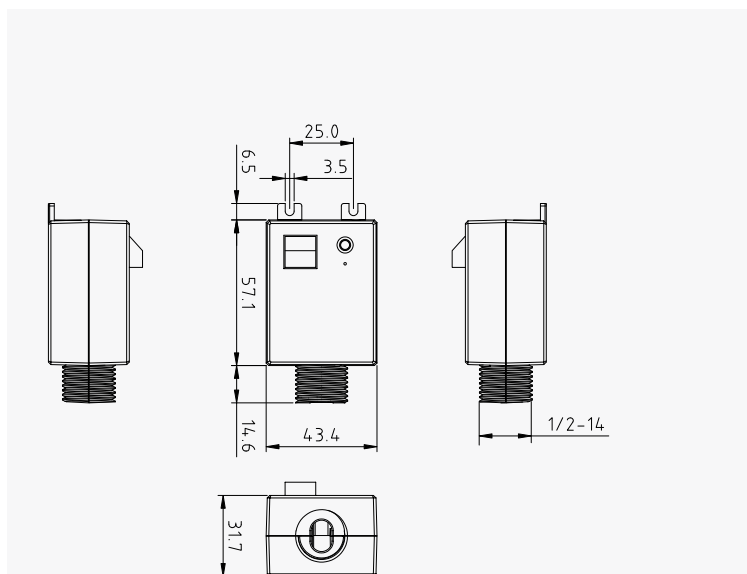
Work with Silvair



Installation



Dimension



Operation

- Do wiring according to connection diagram.
- Kindly refer to "Silvair Commissioning User Manual" for further pairing.
- Press and hold down the "Reset" button on the controller over 5 seconds until the indicator flashes, which means it has been reset.

Statement

FCC STATEMENT

This equipment has been tested and found to comply with the limits for a Class B digital device, pursuant to Part 15 of the FCC Rules. These limits are designed to provide reasonable protection against harmful interference in a residential installation. This equipment generates uses and can radiate radio frequency energy and, if not installed and used in accordance with the instructions, may cause harmful interference to radio communications. However, there is no guarantee that interference will not occur in a particular installation. If this equipment does cause harmful interference to radio or television reception, which can be determined by turning the equipment off and on, the user is encouraged to try to correct the interference by one or more of the following measures:

- Reorient or relocate the receiving antenna.
- Increase the separation between the equipment and receiver.
- Connect the equipment into an outlet on a circuit different from that to which the receiver is connected.
- Consult the dealer or an experienced radio/TV technician for help.

This device complies with part 15 of the FCC Rules. Operation is subject to the following two conditions:

(1) This device may not cause harmful interference, and (2) this device must accept any interference received, including interference that may cause undesired operation.

Changes or modifications not expressly approved by the party responsible for compliance could void the user's authority to operate the equipment.

The distance between user and products should be no less than 20cm.



BLE to 0/1-10V Power pack with 5A Relay & 24V Aux
SR-SV2421-5A-AUX

Warning

- DO NOT expose the device to moisture.
- DO NOT install with power applied to device.
- Operating control; Type 1.B; Pollution degree: II; Rated impulse voltage: 4000V; Overcurrent protective device: 25A;
“When being connected to 277VAC, the control should be connected to three-phase three-wire unearthed systems, and the rated impulse voltage is 4000V.”

Update Log

Date	Version	Update Content	Update by
2025-6-15	V1.1	Parameter Update	Romeo



Subject to change without notice. Please contact us if you have any questions.