



Technology Partner  
**SILVAIR**

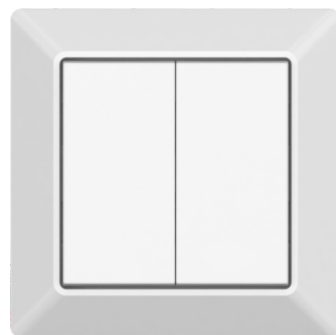
Work with Silvair

# BLE Battery Powered Push Button Switch

SR-SBP2801K4-BLE-E

## Features

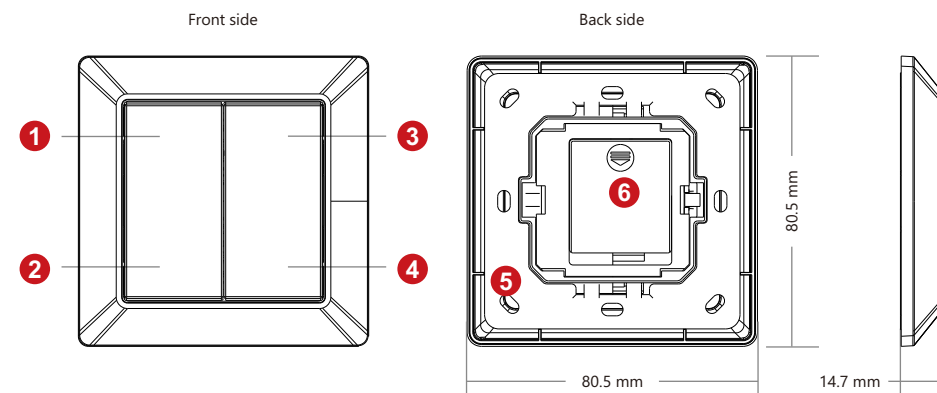
- CCT wall remote based on Bluetooth® Mesh network
- Battery powered , ultra-low power consumption
- Ultra long lifetime, more than 1 million times pushing
- Easy & quick pairing through APP
- Mesh network for further control distance, receivers can transmit signal to each other
- 2.4 GHz global operation
- Transmission range between every two neighbor devices up to 30m
- Standard size, compatible with existing EU size frame
- Working with our BLE driver, controller, signal converter, sensor series product
- On-board antenna
- Waterproof grade: IP20
- 5 years warranty



## Parameters

Protocol	Bluetooth® mesh
Power Supply	3VDC(1xCR2430 Battery)
Transmission Frequency	2.4GHz
Transmission Range(free field)	Min.30m
Protection Type	IP20
Dimming Range	0.1%-100%
Dimensions	80.5x80.5x14.7mm

## Product info



- ① Click to turn on, press and hold down to increase light intensity.
- ② Click to turn off, press and hold down to decrease light intensity.
- ③ CW button: click to recall the scene, press and hold to increase cool white.
- ④ WW button: click to recall the scene, press and hold to increase warm white.
- ⑤ The remote control can be fixed on the wall with 3M glue or screw.
- ⑥ Battery: CR2430. Before the first use, please open the battery cover and remove the protective film.

**NOTE:** In order for switches to operate as described above, please make sure the “I” label is placed above the “O” label.





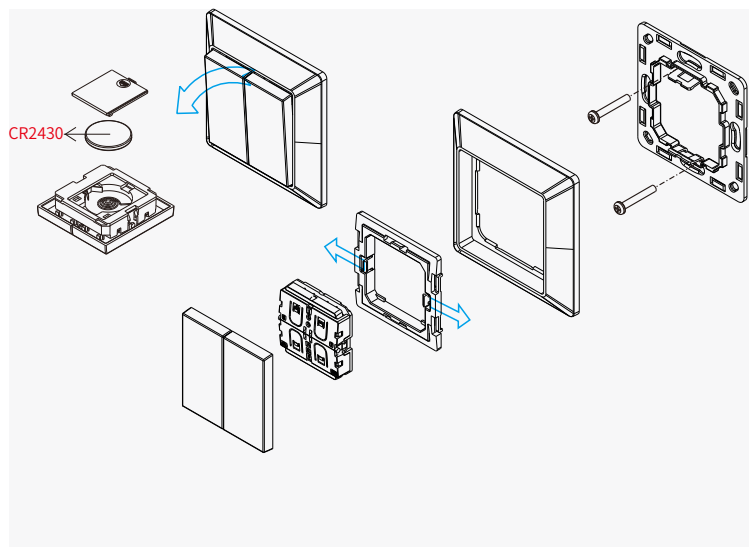
## BLE Battery Powered Push Button Switch

SR-SBP2801K4-BLE-E

Technology Partner  
**SILVAIR** Work with Silvair



### Installation



### Warning

- DO NOT expose the device to moisture.

### Operation

- Kindly refer “Silvair Commissioning User Manual” for further pairing, grouping, scene settings.
- Kindly refer “Silvair Kinetic Switch Keypad User Manual” to go further pairing, grouping, scene settings.

### Application

