

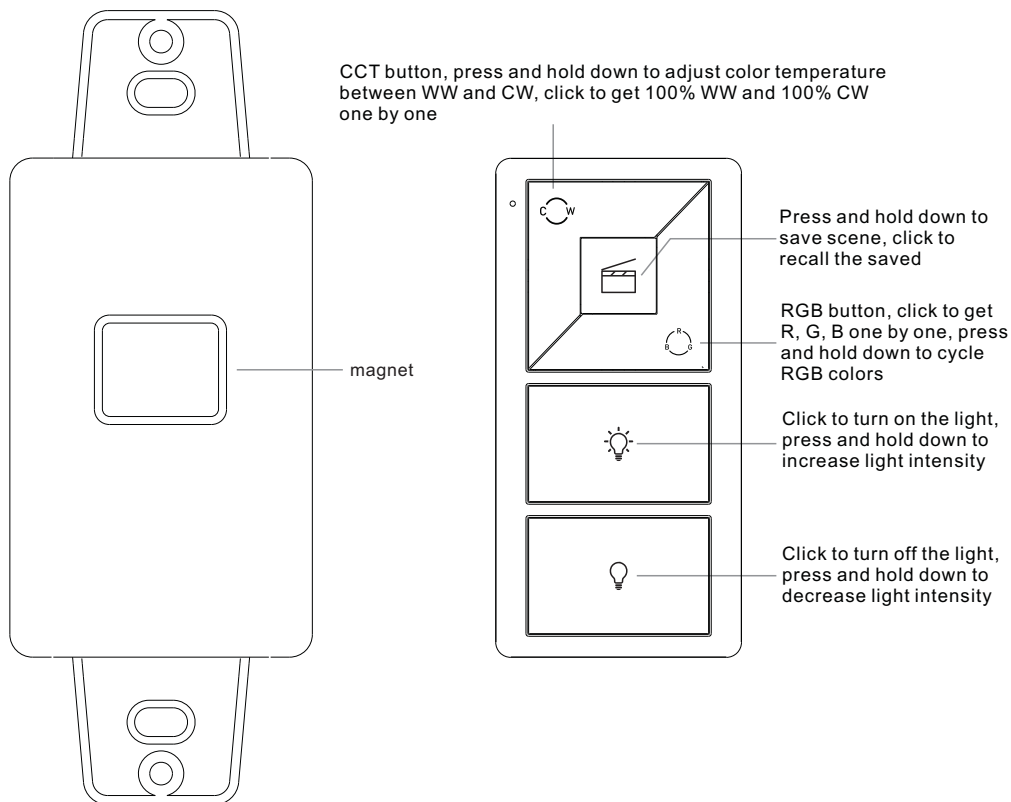
# RF+Bluetooth US Size 3 in 1 Remote Controller

09.SB901K5RB.04753



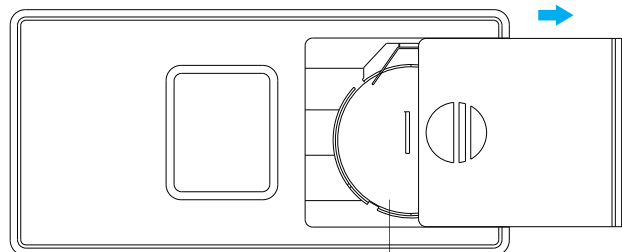
**Important:** Read All Instructions Prior to Installation

## Function introduction



Bracket

Front side



Back side

**Note:** Before the first use, please remove the protective film on the battery.

## Product Data

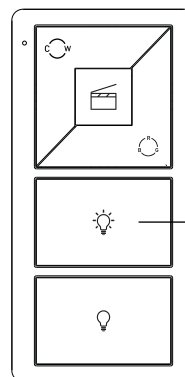
Output	RF+Bluetooth
Operation Frequency	2.4GHz
Power Supply	3V(1xCR2032 battery)
Operating temperature	0-40°C
Relative humidity	8% to 80%
Dimensions	66x32.5x8.9mm

- RF+Bluetooth RGB, CCT, DIM 3 in 1 wall mounted remote control
- Enables to control 1 zone of receivers
- Easy & quick pairing to the RF+Bluetooth receivers by simply pushing the buttons
- Enables to control universal DIM, CCT, RGB, RGBW and RGB+CCT RF+Bluetooth devices
- Mesh network for further control distance, receivers can transmit signal to each other
- Each remote can control numerous receivers
- Each receiver can be paired to max. 8 remote controls
- The controlled receiver status can be quickly synchronized to the smart APP
- Transmission range between every two neighbor devices up to 30m
- Bluetooth low power consumption technology, long battery life

## Safety & Warnings

- This device contains a button lithium battery that shall be stored and disposed properly.
- DO NOT expose the device to moisture.


## Pair with RF+Bluetooth receiver



**Step 1:** Do wiring the RF+Bluetooth receiver according to wiring diagram (please refer to the instruction of RF+Bluetooth receiver that you would like to pair with).



**Step 2:** Click the "Prog. Key" or "Reset" button on RF+Bluetooth receiver (or reset power of the receiver 3 times continuously if the button is not accessible) to set it into pairing to RF remote status

**Step 3:** Click any button of the remote (e.g. button ) , LED lights connected with the receiver flicker once means the receiver is paired to the remote successfully.

**Note:** one receiver can be paired with max 8 remote controls.

# Installation

