



Technology Partner
SILVAIR

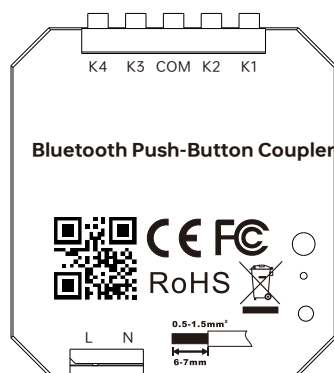
Work with Silvir

BLE Push-Button Coupler

SR-SB2833PAC-BLE

Features

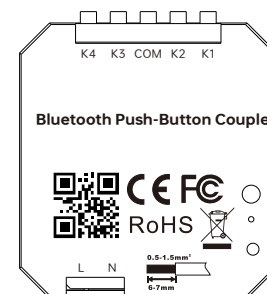
- Bluetooth push-button coupler, Bluetooth® mesh network
- Easily integrated with existing push switches
- Mesh network, which has a much longer control distance, transmits received signals to neighboring devices
- In typical indoor environment, the typical range for wireless communication is 20m to 25m. Actual range is dependent on field installation.
- On-board antenna
- Waterproof grade: IP20
- 5 years warranty



Parameters

Switch Type	2.4G Mesh Push-button Coupler
Transmission Range	10-30m (typical)
Radio Frequency	2.4GHz
Power Supply	100-240VAC, 50/60Hz
Power Consumption	Less than 0.5W
Number of Push Buttons	4
Connector Type	Push-In
Wire Size	0.2 - 1.5mm ² (AWG28 - AWG14)
Dimensions	49.8x43x15.1mm
Operating Temperature	-20 °C - 45°C
Working Humidity	10% ~ 95% RH non-condensing
Waterproof Grade	IP20
Warranty	5 years

Product info



L - terminal for live lead input

N - terminal for neutral lead input

K1, K2, K3, K4 - terminals for push buttons

COM - common terminal for grounding to the push buttons connected to the couple

Fixed function of each Push-button panel:

K1: Short press off, long press dim down

K2: Short press on, long press dim up

K3: Short press Scene A, long press WW

K4: Short press Scene B, long press CW





BLE Push-Button Coupler SR-SB2833PAC-BLE

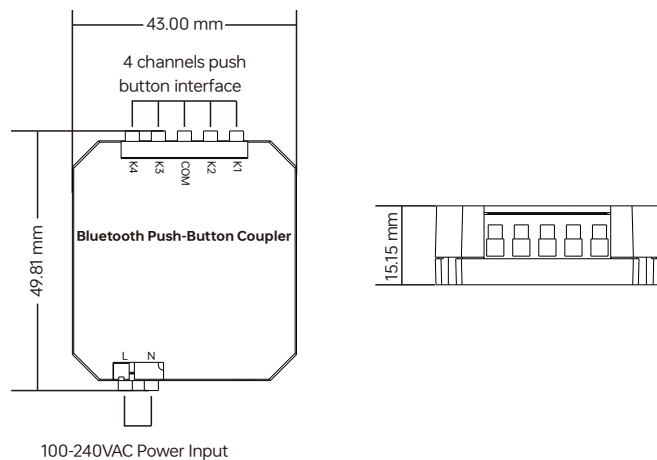
Technology Partner

SILVAIR

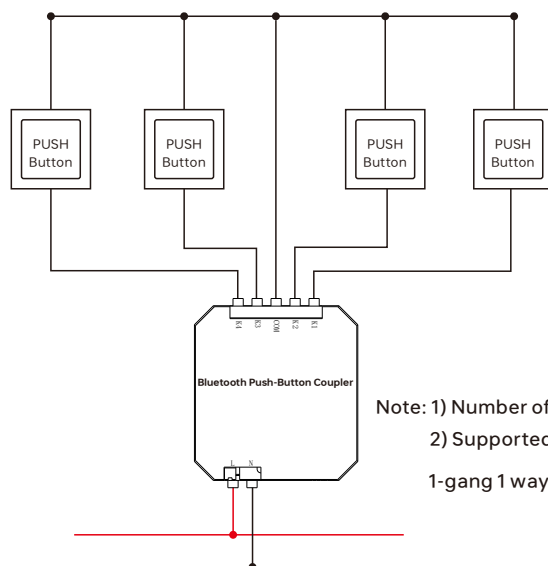
Work with Silvair



Dimension



Wiring



Fixed function of each Push-button panel:

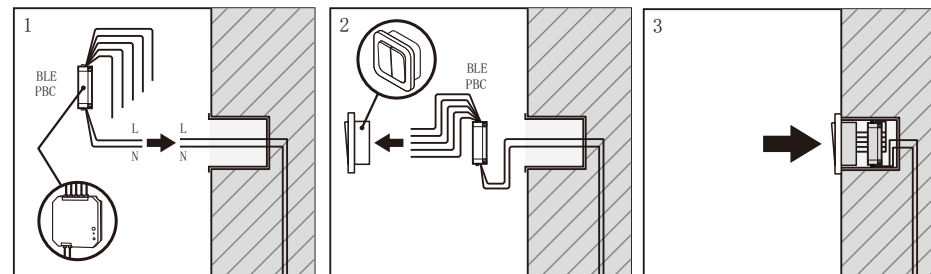
- K1: Short press off, long press dim down
- K2: Short press on, long press dim up
- K3: Short press Scene A, long press WW
- K4: Short press Scene B, long press CW

Note: 1) Number of push buttons connected can be 1, 2, 3, 4.

2) Supported switch types:

1-gang 1 way, 2-gang 1 way, 3-gang 1 way, 4-gang 1 way.

Installation



Update Log

Date	Version	Update Content	Update by
2024-08-14	V1.1	Parameter update	Romeo

Subject to change without notice. Please contact us if you have any question s.

