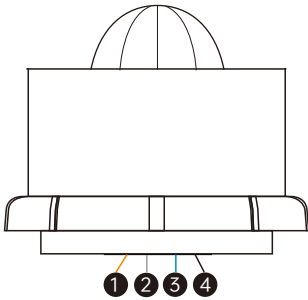


Casambi Wireless IP65 ZHAGA 18 PIR Sensor + Light Sensor + DALI Dimming



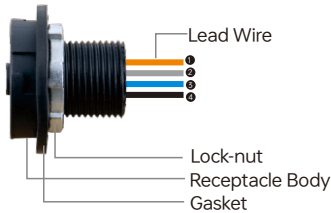
**Important:** Read All Instructions Prior to Installation

Function introduction



Zhaga Receptacle Accessory(optional for order)

- 1 Port 1 (Brown): VCC (12-24V)
- 2 Port 2 (Gray): GND/ DA- (DALI signal)
- 3 Port 3 (Blue): DA+ (DALI signal)
- 4 Port 4 (Black): No connection



Product Description

The IP65 motion sensor combines presence sensing, daylight harvesting, DALI dimming and Casambi radio technology. The sensor can work with DALI LED drivers or luminaires, the luminaires just need to be connected to mains power. The result is increased occupant comfort and significant energy savings that meet the most demanding building energy codes. The sensor is suitable for low bay applications which need sensor based automation.

Casambi Technology Explained

The Casambi technology provides a mesh network where all the intelligence of the system is replicated in every node and, in such a way, creates a system with no single point of failure. In this kind of fully distributed architecture, any unit can go offline and catch up from others when they return back online.

Wireless Features

- Control a large number of fixtures from any point
- Simple to use UI
- Wide range of functionality – Grouping Luminaires, different lighting situations for different occasions, colour temperature, daylight sensor, occupancy sensor and much more.

Key Features

- PIR motion detection
- Daylight harvesting
- Works with DALI drivers or luminaires, broadcast control
- Autonomous sensor-based control
- Can be use for outdoor applications
- ZHAGA Book 18 socket

Benefits

- Cost-effective solution for energy savings
- Energy code compliance
- Robust mesh network

Applications

- Warehouses
- Factories
- Street and Area Lighting
- Outdoor Luminaires - Wall Packs - Parking Lots - Walkways
- Photo Controls
- Central Management System

Product Data

Electrical Information

Power Supply	12-24VDC
Current Consumption	< 20mA
Dimming Control	DALI
DALI Control Mode	Broadcast
Status Indicators	Red (motion detection)

Wireless Communication

Transceiver Frequency	2.4GHz ISM band
Radio Range	164 feet (50m) in open field
Radio Certification	FCC/IC, CE

Lighting Control

Features	DALI broadcast, Individual/group addressing, Scene control Autonomous sensor-based control, Scheduler control
----------	--

Sensing

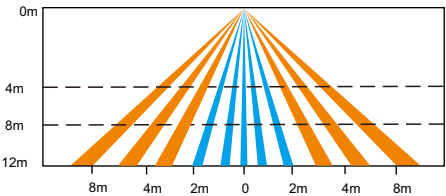
Occupancy Sensing Type	PIR sensor
Lux Detection Range	0-1000 Lux
Mounting Height	Up to 14m, recommended height: 6-12m
Detection Angle	360° (ceiling)
Detection Range	Up to 16 meters @ 12m installation height

Environment

Operating Temperature Range	-20°C to 40°C
Operating Humidity	0-95% (non condensing)
Safety Certification	cULus Listed, CE

Detection Pattern

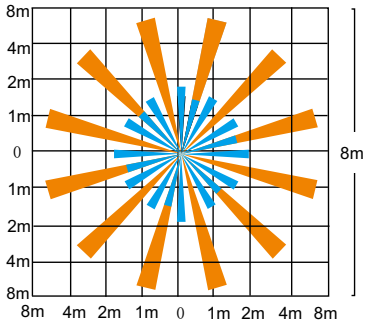
Coverage Side View



The detection area for movement sensor can be roughly divided into two parts:

- Slow movement (person moving < 1.0/s or 0.3m/s)
- Quick movement (person moving > 1.3/s or 0.4m/s)

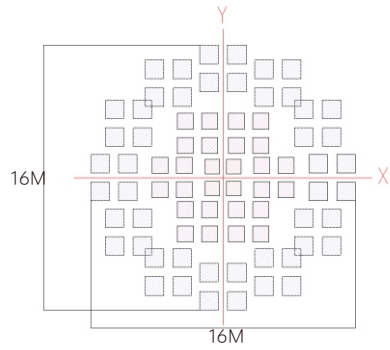
Coverage Top View



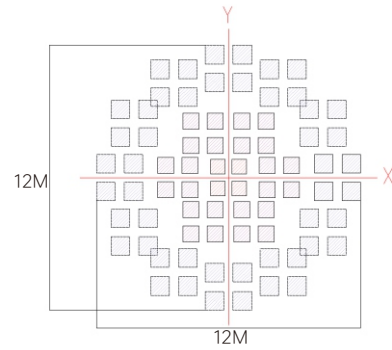
## Detection Area

Note:

- 1) Following different detection areas are based on different installation heights & patterns.
- 2) For all detection areas, the sensitivity is set to 0 the highest.
- 3) Detection Pattern is a relevant value, the performance should depends on the site conditions (installation height/ temperature/ humidity/ Blind area...etc)

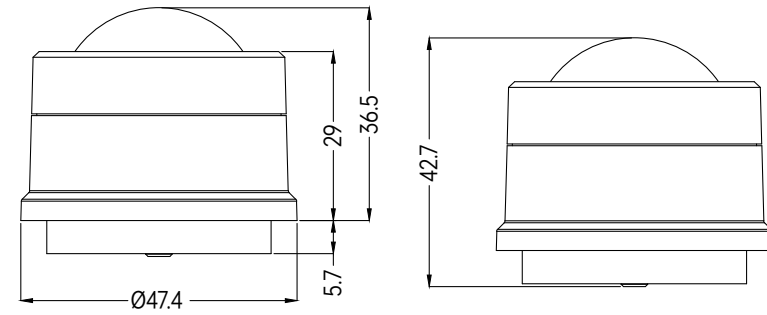


Detection pattern at floor level (12 height)

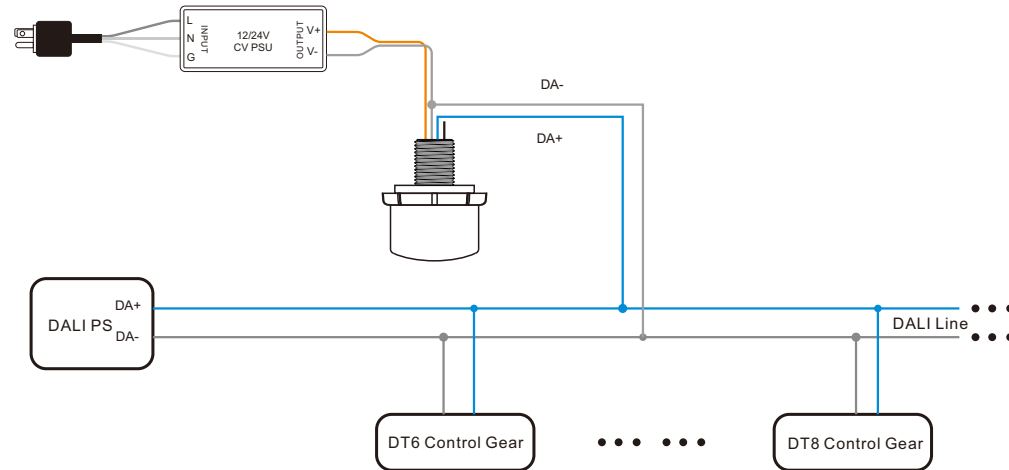


Detection pattern at floor level (15 height)

## Product Dimension



## Wiring Diagram



Note: please make sure the polarity of DALI signal of the sensor is correctly connected.