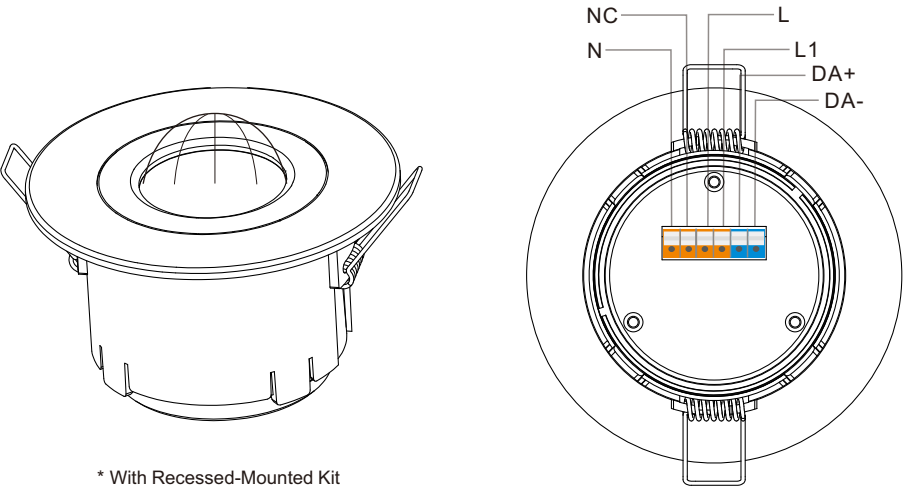


Casambi BLE to DALI Ceiling Mounted AC PIR Sensor with 10A Relay



Important: Read All Instructions Prior to Installation

Function introduction



* With Recessed-Mounted Kit

Product Description

The ceiling mounted sensor combines presence sensing, daylight harvesting, DALI dimming and Casambi radio technology. The sensor can work with DALI LED drivers or luminaires, the luminaires just need to be connected to mains power. The result is increased occupant comfort and significant energy savings that meet the most demanding building energy codes. The sensor is suitable for low bay applications which need sensor based automation.

Casambi Technology Explained

The Casambi technology provides a mesh network where all the intelligence of the system is replicated in every node and, in such a way, creates a system with no single point of failure. In this kind of fully distributed architecture, any unit can go offline and catch up from others when they return back online.

Wireless Features

- Control a large number of fixtures from any point
- Simple to use UI
- Wide range of functionality – Grouping Luminaires, different lighting situations for different occasions, colour temperature, daylight sensor, occupancy sensor and much more.

Product Data

Input & Output Characteristics

| | |
|-------------------|--------------------|
| Operating voltage | 220~240VAC 50/60Hz |
| Standby power | <0.5W |
| Relay | Max. 10A, 400W LED |

Mechanical Data

| | |
|------------------|--------------------|
| Dimension | φ90*52mm |
| Material | Flame-retarant/ABS |
| Protection Class | Class II |

Safety & EMC

| | |
|----------------------|--|
| EMC standard(EMC) | EN55015, EN61000, EN61547 |
| Safety standard(LVD) | EN60669-1, EN60669-2-1, AS/NZS60669-1/-2-1 |
| RED | En300328, EN301489-1/-17 |
| Certification | ENEC, CE, EMC, RED, RCM |

Wireless Communication

| | |
|-----------------------|------------------------------|
| Transceiver Frequency | 2.4GHz ISM band |
| Radio Range | 164 feet (50m) in open field |
| Radio Certification | FCC/IC, CE |

Lighting Control

| | |
|----------|--|
| Features | DALI broadcast, Individual/group addressing, Scene control Autonomous sensor-based control, Scheduler control |
|----------|--|

Sensing

| | |
|--------------------|--------------------|
| Movement detection | Max. 8m @3m height |
| Installation | Max. 5m |

Connectors

| | |
|--------------------------|---|
| Terminal block/Wire size | 0.5mm ² - 1.5mm ² solid or stranded |
| Wire strip length | 6-7mm |

Environment

| | |
|-----------------------------|---|
| Operating Temperature Range | Ta: -20°C to +50°C |
| IP rating | IP44 (Front-face), IP44(with surface mount kit) |

Key Features

- PIR motion detection
- Daylight harvesting
- Works with DALI drivers or luminaires, broadcast control
- Autonomous sensor-based control
- Can be use for indoor applications

Applications

- Open offices
- Individual offices
- Conference rooms
- Classrooms
- Retail stores
- Hospitals
- Lobbies

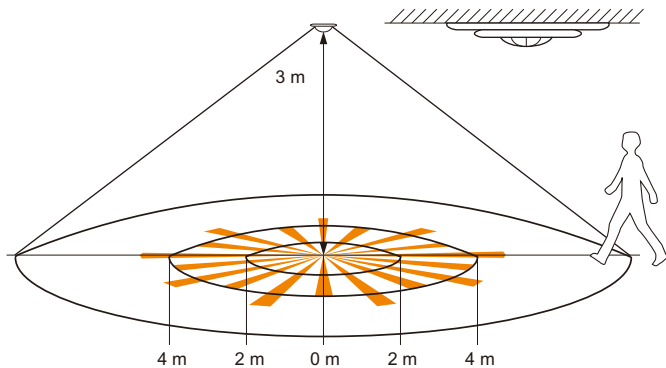
Benefits

- Cost-effective solution for energy savings
- Energy code compliance
- Robust mesh network

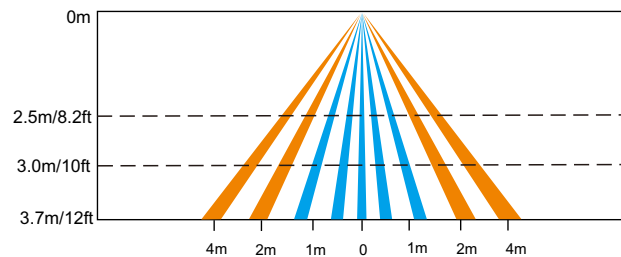
Warning

- DO NOT install with power applied to device.
- DO NOT expose the device to moisture.

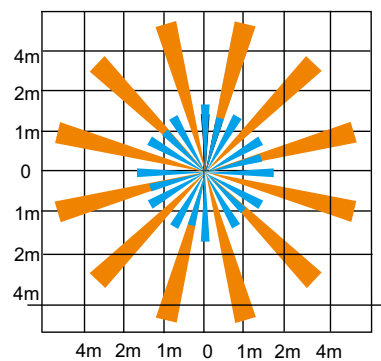
Detection Pattern



Coverage Side View



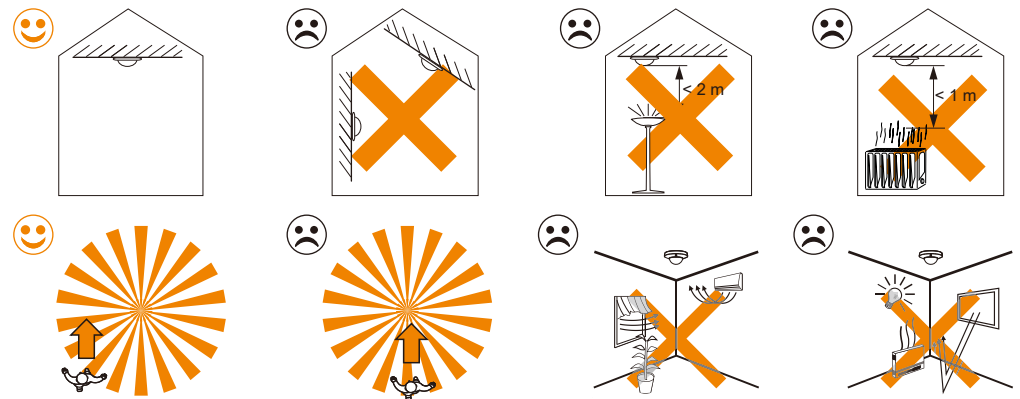
Coverage Top View



The detection area for movement can be roughly divided into two parts:

- Slow movement (person moving $< 1.0/s$ or $0.3m/s$)
- Quick movement (person moving $> 1.3/s$ or $0.4m/s$)

Place/Detection instruction



Application

1. Power up the sensor. The load should come on immediately.

2. Vacate the room or remain very still and wait for the load to switch off.

3. Enter the room or make some movement and check that the load switches on.

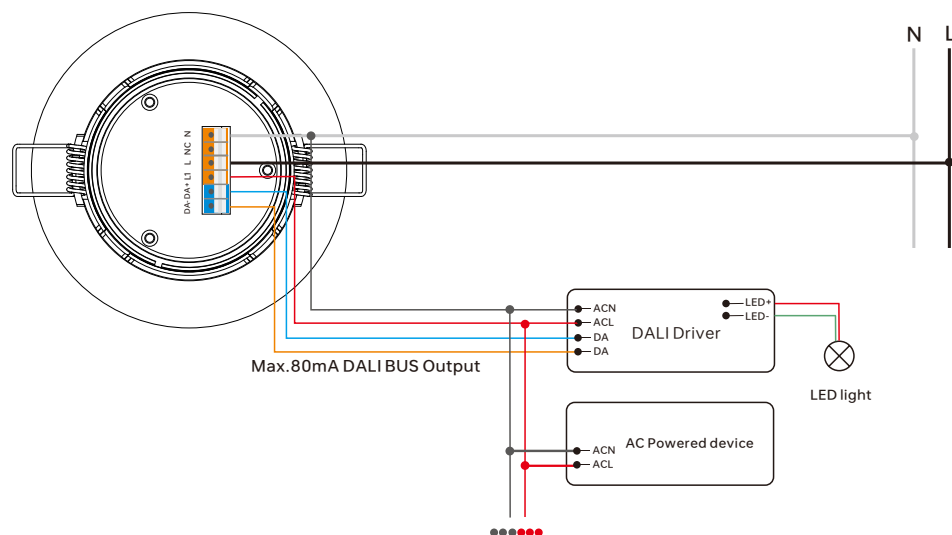
PRECAUTIONS

- Do not place the SENSOR near heat sources, fans or in ventilated ceiling voids.
- Do not place close to, or positioned such that, any light source points directly into the SENSOR.
- Ensure wires and cables are securely held within the connection terminals.
- Disconnect the SENSOR from the circuit before performing insulation testing of the wiring circuit.

Bend the springs up and push detector through hole in ceiling. When fully inserted the springs snap back to hold the device in place. To avoid injury, take care when bending springs.

Installation complete.

Wiring Diagram



Installation Precautions

- Avoid areas with frequent temperature changes: Keep away from air conditioners, fans, refrigerators, ovens, and other objects that cause rapid temperature changes. The detection effectiveness of PIR motion sensors is closely related to temperature fluctuations, and vents or heat sources can lead to false alarms.
- Avoid areas with significant air flow.
- Avoid facing glass doors and windows directly: 1) Do not face glass doors and windows directly to avoid interference from strong light. 2) Avoid complex environments outside doors and windows, such as direct sunlight, crowds, and moving vehicles.
- Avoid installing opposite large, constantly moving objects: Large objects with significant motion can cause sudden changes in airflow within the detection area, leading to false alarms. Outdoor PIR motion sensors should not be installed opposite large trees or tall bushes.
- Avoid areas with screens, furniture, large potted plants, or other obstacles within the detection range.
- Avoid areas exposed to direct sunlight.

Product Dimension

