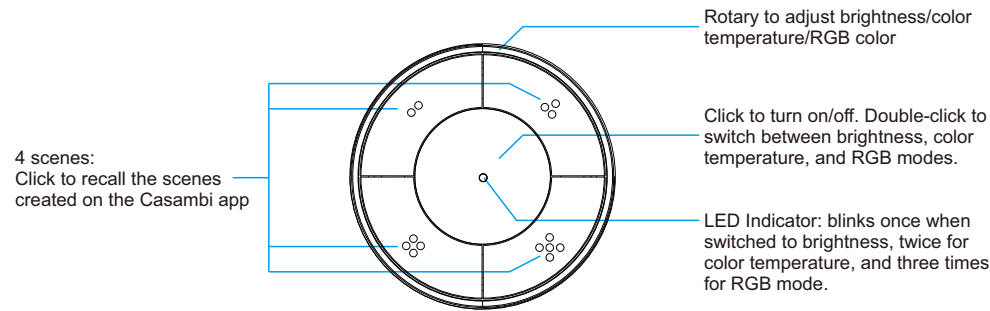


Casambi Push + Rotary Knob Smart Remote



Important: Read All Instructions Prior to Installation

Function introduction



Product Data

Protocol	Casambi
Operation Voltage	3VDC (CR2450 battery)
Transmission Frequency	2.4GHz
Transmission Range (free field)	30m
Dimension	Φ 58x20mm
Waterproof Grade	IP20

- Casambi smart remote
- Enables to control single color/CCT/RGB/RGBW/RGB+CCT lighting device
- Can be configured and controlled by Casambi app
- Typical mesh range is over 50 meters line of sight for indoor environment
- Battery powered remote with low power consumption

Configure push button function via Casambi APP

Step 1: Open the Casambi app and add the remote to your Casambi network. After a successful addition, the remote will be shown in the **Switches** view.

Step 2: In the **Switches** view, tap the remote to configure its button functions. Five push buttons are available for configuration:

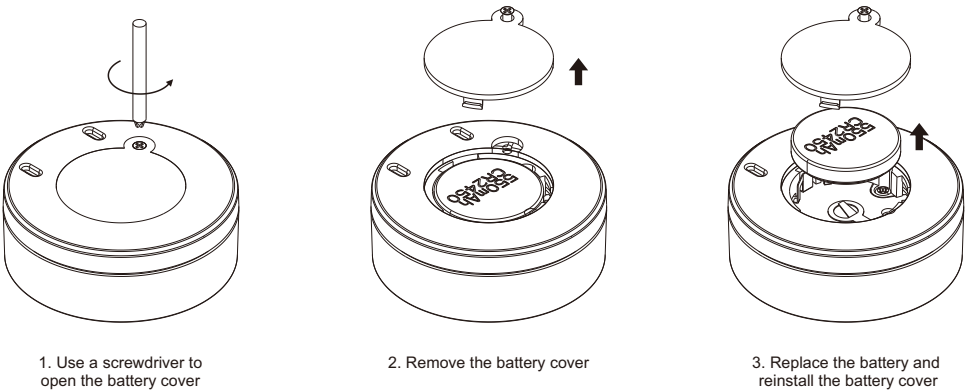
Push button 1 corresponds to the center button of the remote, and you can choose to control either a luminaire or a group in the app.

Push buttons 2-5 correspond to scenes 2-5 of the remote, and you can assign a scene to each button in the app.

Step 3: After configuration, both the remote and the app can control the lighting.

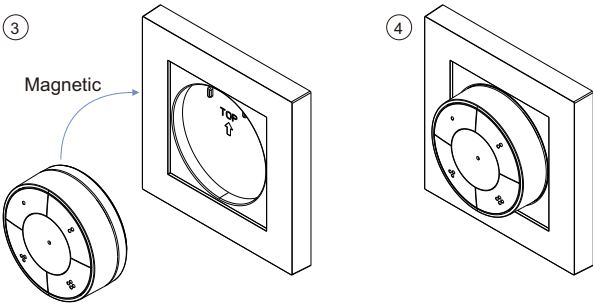
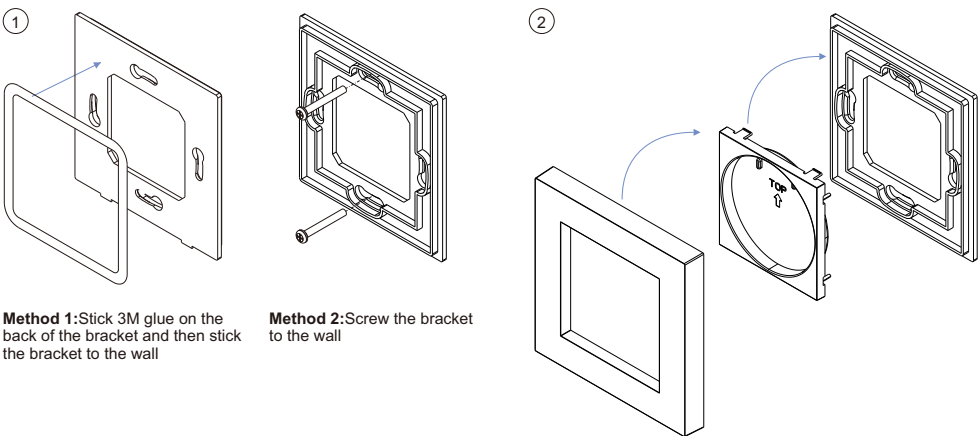
Note: Please refer to the Casambi App User Manual for more detailed instructions if needed.

Replace Battery

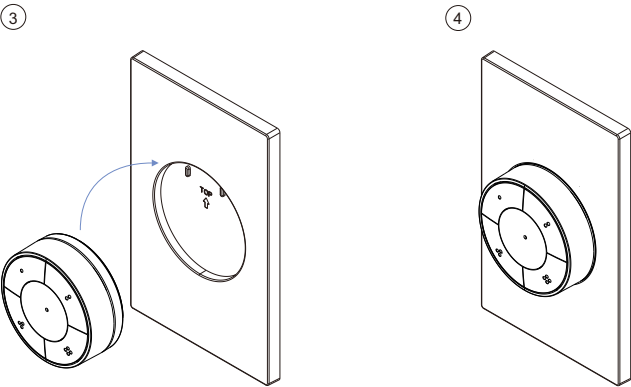
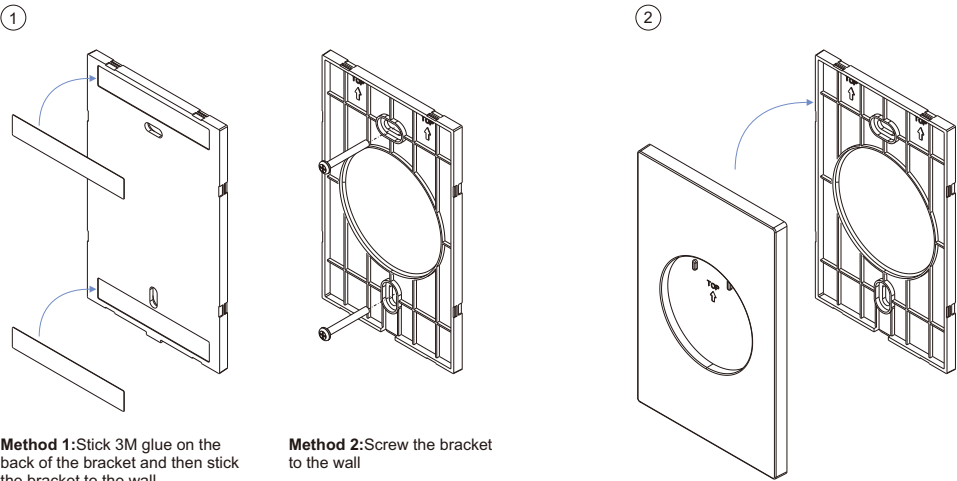


Installation bracket

1. EU standard size bracket



2. US standard size bracket



Battery Warnings & Safty

Warnings and Statements:

This product contains a CR Coin Cell Lithium Battery and meets the requirements of the **16 CFR Part 1263**. For your safety and to ensure proper operation, please carefully read and understand the following warnings and statements.

⚠ WARNING

- **INGESTION HAZARD:** This product contains a button cell or coin battery.
- **DEATH** or serious injury can occur if ingested.
- A swallowed button cell or coin battery can cause **Internal Chemical Burns** in as little as **2 hours**.
- **KEEP** new and used batteries **OUT OF REACH** of **CHILDREN**
- **Seek immediate medical attention** if a battery is suspected to be swallowed or inserted inside any part of the body.

Statements:

- **INDOOR USE ONLY**
- Remove and immediately recycle or dispose of used batteries according to local regulations and keep away from children. Do NOT dispose of batteries in household trash or incinerate.
- Even used batteries may cause severe injury or death.
- Call a local poison control center for treatment information.
- Do not install any battery other than CR2450 or its equivalent.
- Ensure the CR2450 operates at the nominal battery voltage (3VDC).
- Non-rechargeable batteries are not to be recharged.
- Do not force discharge, recharge, disassemble, heat above (manufacturer's specified temperature rating) or incinerate. Doing so may result in injury due to venting, leakage or explosion resulting in chemical burns.
- Ensure the batteries are installed correctly according to polarity (+ and -).
- Do not mix old and new batteries, different brands or types of batteries, such as alkaline, carbon-zinc, or rechargeable batteries.
- Remove and immediately recycle or dispose of batteries from equipment not used for an extended period of time according to local regulations.
- Always completely secure the battery compartment. If the battery compartment does not close securely, stop using the product, remove the batteries, and keep them away from children.
- If the battery leaks, do not touch or smell it, wipe the leakage from the battery compartment, and then replace the battery with a new one.
- If a battery leaks and the material contacts your skin or clothing, flush the exposed area thoroughly with running water. In case of eye contact, flush thoroughly with copious amounts of clean running water and seek immediate medical assistance.

Battery information:

Battery	Battery Type	Operation Voltage	Diameter
CR2450	Button Cell	3VDC	24.5mm(0.965inch)

Disposing of used batteries:

- When disposing of used batteries, please comply with governmental regulations or environmental public institutions' rules that apply in your country/area.
- Note and follow the **STATEMENTS** in **WARNINGS AND STATEMENTS**.