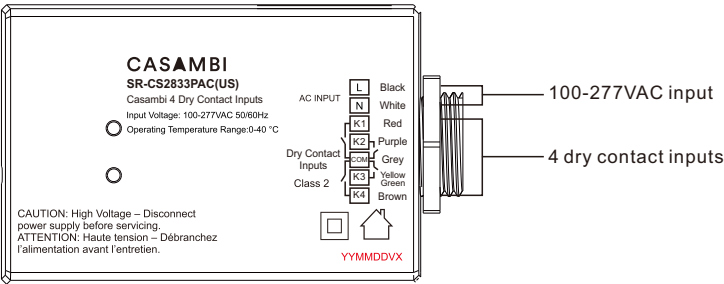


# Casambi Push button Coupler



**Important:** Read All Instructions Prior to Installation

## Function introduction



## Product Data

Protocol	Casambi
Power Supply	100-277VAC
Contact	4 dry contacts
Dimensions	82.5x55x31mm
Operating Temperature	0 °C ~ +40 °C
Working Humidity	8% ~ 80%
Waterproof Grade	IP20
Warranty	5 years

- Casambi push button coupler
- 4 dry contacts, can connect to 4 push buttons
- Mesh network, which has a much longer control distance, transmits received signals to neighboring devices
- The range for wireless communication is about 50 meters in typical indoor environment, actual range is dependent on field installation
- Button function can be freely configured by Casambi app to control a luminaire, a group, an element, a scene, whole network, etc
- Standard 1/2" knockout design, easy to integrated to a junction box
- Waterproof grade: Ip20
- 5 years warranty

## Safety & Warnings

- DO NOT install the device with power applied.
- DO NOT expose the device to moisture.

## Wiring Diagram

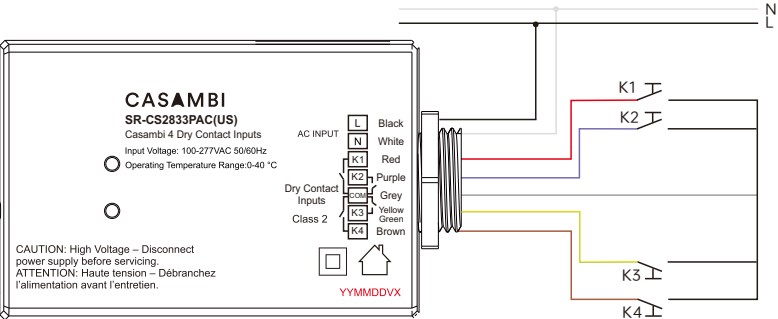
**Notes for the diagrams:**

**L** - terminal for live lead input

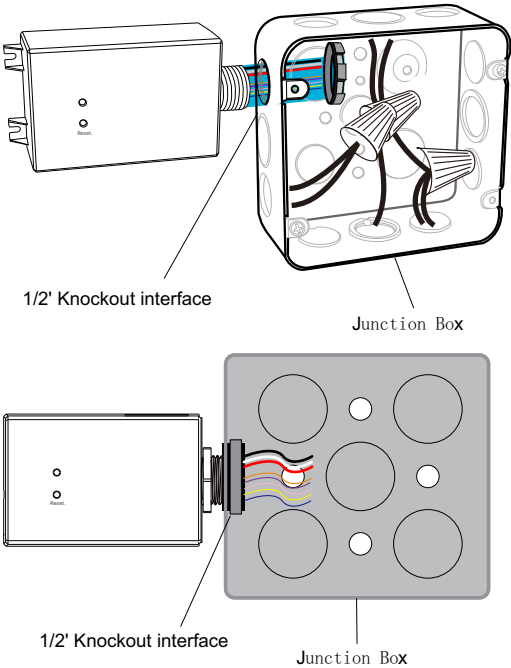
**N** - terminal for neutral lead input

**K1-K4** - terminals for push buttons

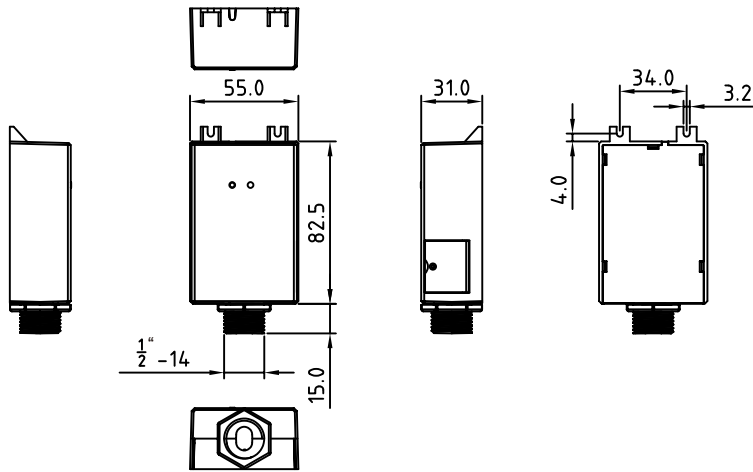
**COM** - common terminal for grounding to the push buttons connected to the coupler



## Installation



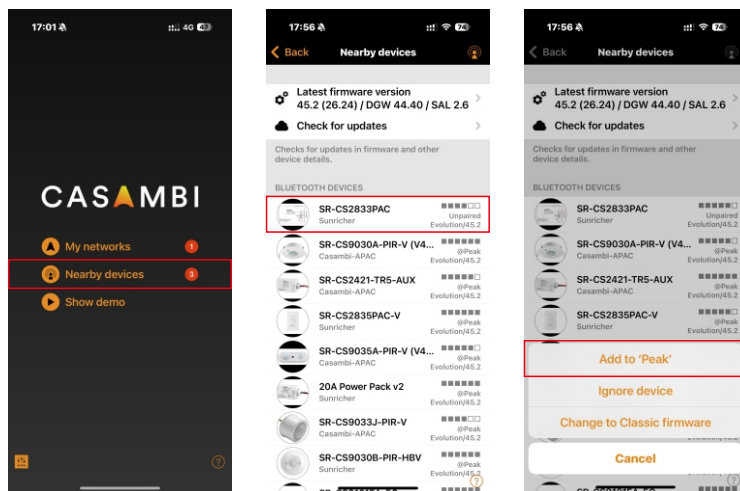
## Dimension



## Configure push button function via Casambi APP

### 1. Add the Casambi coupler and lighting devices to the same Casambi network.

Open Casambi App, tap "Nearby devices" -> tap the coupler to be added -> tap "Add to 'Peak'" to add it to the network -> the coupler will be successfully added.

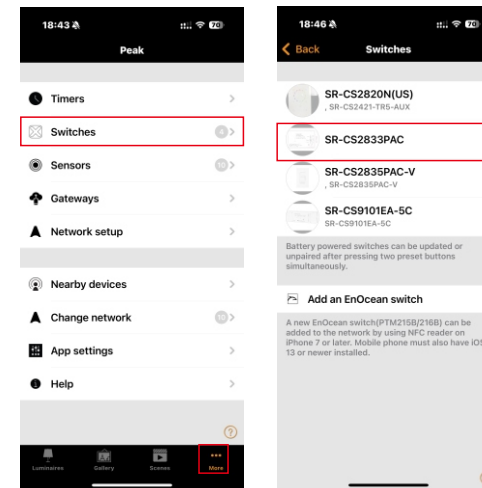


### 2. Configure the push button functions.

Four buttons are available for configuration. Each button can be configured to control a luminaire, a group, a scene, an element or all luminaires.

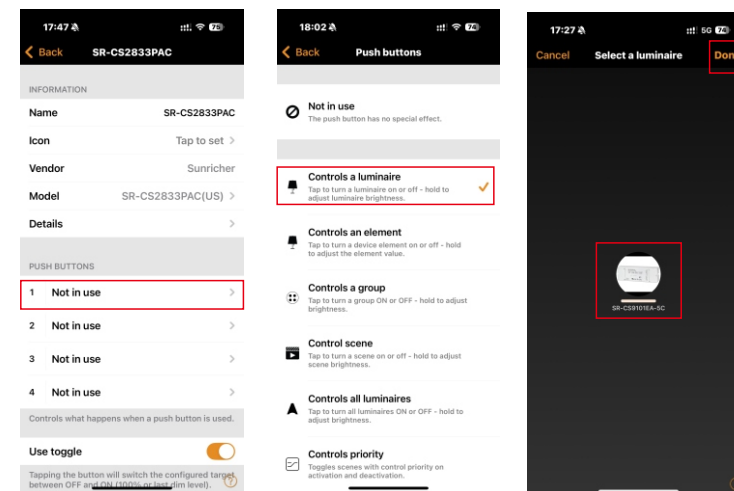
#### 2.1 Find the coupler

On the More tab -> tap "Switches" and the added coupler is displayed -> tap the coupler to configure button functions.



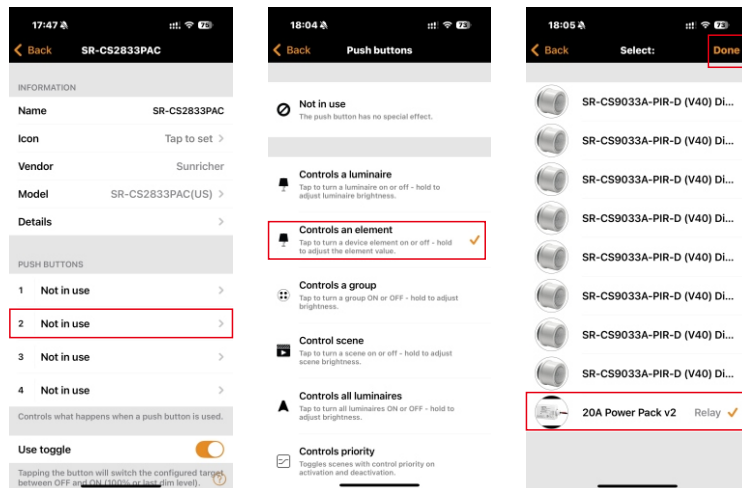
#### 2.2 Controls a luminaire

Choose one button (eg.: 1) -> tap "Controls a luminaire" -> select the luminaire to be added -> tap "Done".



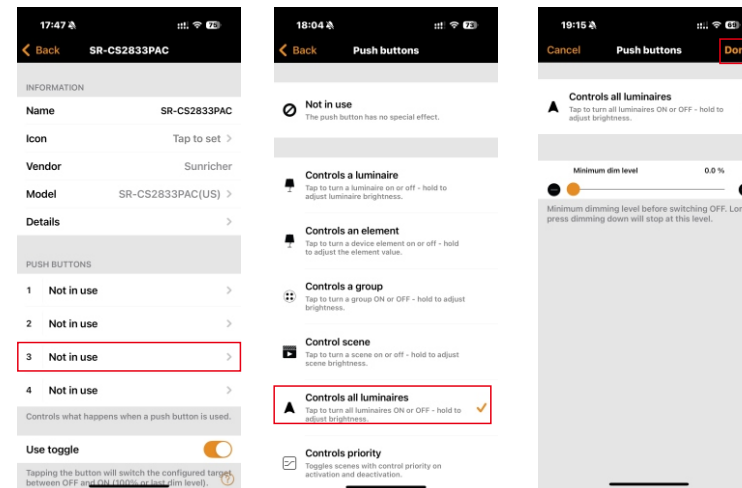
## 2.3 Controls an element

Choose one button (eg.: 2) -> tap "Controls an element" -> select the element to be added -> tap "Done".



## 2.5 Controls all luminaires

Choose one button (eg.: 4) -> tap "Controls all luminaires" -> tap "Done".



## 2.4 Controls a group/scene

Choose one button (eg.: 3) -> tap "Controls a group/scene" -> select the group/scene you have already created -> tap "Done".

