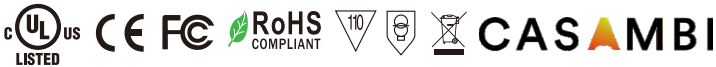


Casambi Phase Load Dimmer with 12V Aux Output

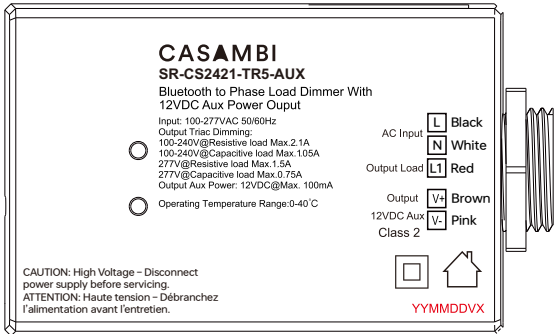
Important: Read All Instructions Prior to Installation



Features

- Casambi phase load dimmer
- Standard 1/2" knockout design, easy to integrated to a junction box
- Built-in IoT/Sensor application interface, Max. 100mA@12V
- Work with our BLE to 0-10V load dimmer to realize more convenient and flexible control
- Support reverse edge(trailing edge) type driver
- Can be wirelessly controlled by Casambi app, Casambi switches, kinetic switches and Casambi sensors
- External antenna, typical mesh range is over 50meters line of sight for indoor environment
- UL listed. Category: PAZX (Management Equipment, Energy). UL 2043 Plenum Rated
- Waterproof grade: IP20
- 5 years warranty

Product Info



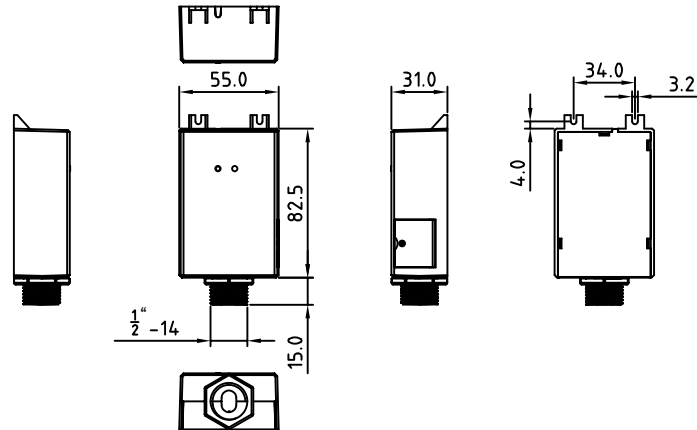
Parameters

Input	Power	100-277VAC
Output, Aux. Power	VDC/mA	12V, Max. 100mA
Output, Phase Dimming	Line Voltage	100-277VAC
	Current	Max. 2.1A
Environment	Operating Temperature	0°C-+40°C
	Relative Humidity	8% to 80%
Others	Size	82.5*55*31mm

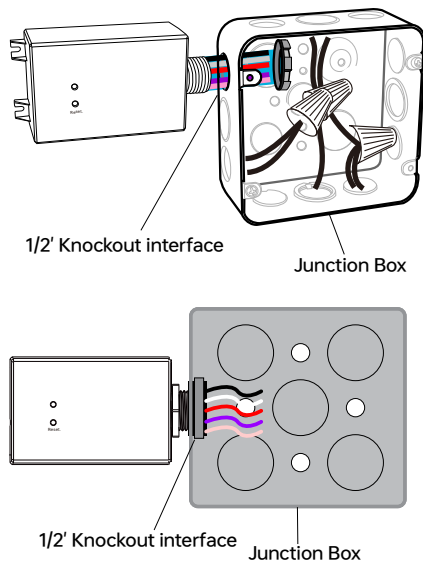
Compatible Load Types			
Load Symbol	Load Type	Maximum Load	Remarks
	Incandescent lighting HV Halogen lamps	1*252W@120V , 1*504W@240V 1*415W@277V	
	Low voltage halogen lighting with electronic transformers	1*252W@120V , 1*504W@240V 1*415W@277V	
	Dimmable LED lamps	1*126W@120V 1*252W@240V 1*207W@277V	
	Dimmable LED Drivers	1*126W@120V 1*252W@240V 1*207W@277V	

- Warning**
- DO NOT expose the device to moisture.
 - DO NOT install with power applied to device.
 - DO wiring according to connection diagram.

Dimension

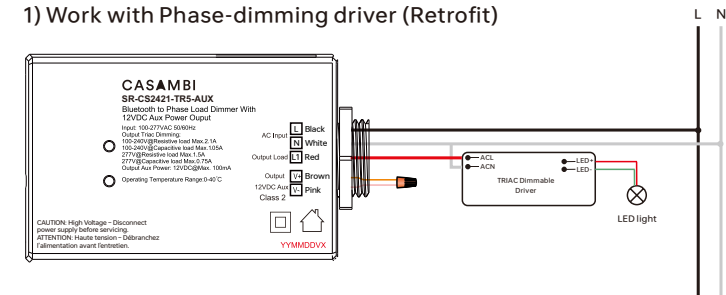


Installation

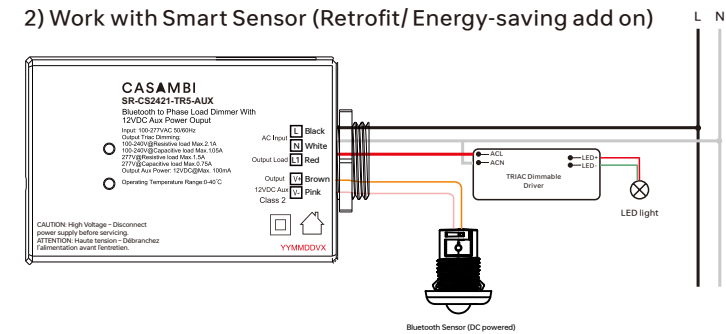


Wiring

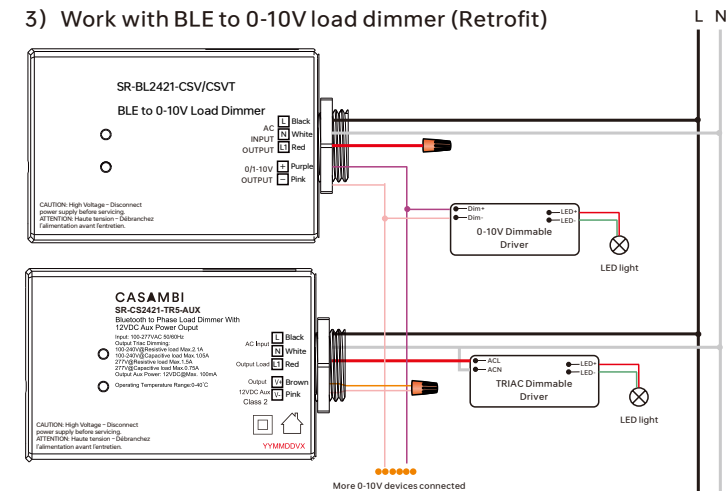
1) Work with Phase-dimming driver (Retrofit)



2) Work with Smart Sensor (Retrofit/ Energy-saving add on)



3) Work with BLE to 0-10V load dimmer (Retrofit)

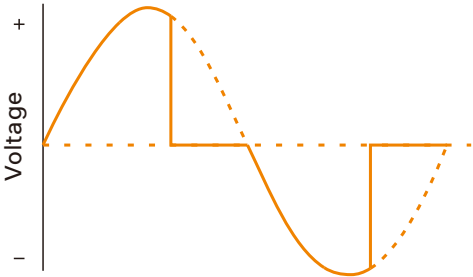


Note :

- 1) You can both have 0-10V and Phase dimming. Those traditional dimming methods become Wireless.
- 2) You can handle those major retrofit projects, whether they're using Phase dimming or 0-10V, even both. We have PROPER solutions.
- 3) Smart IoT Aux power interface allows you to have that diversity into different applications.
Especially for those projects with energy-code requirements.

Dimming

Reverse-phase/Trailing-edge control



Note:
The default is reverse-phase dimming, which could be forward-phase based on requirements.

Update Log

Date	Version	Update Content	Update by
2025-3-10	V1.0	Initial Version	Jerry

Subject to change without notice. Please contact us if you have any questions.