

# Push Button DALI DT6 Group Controller

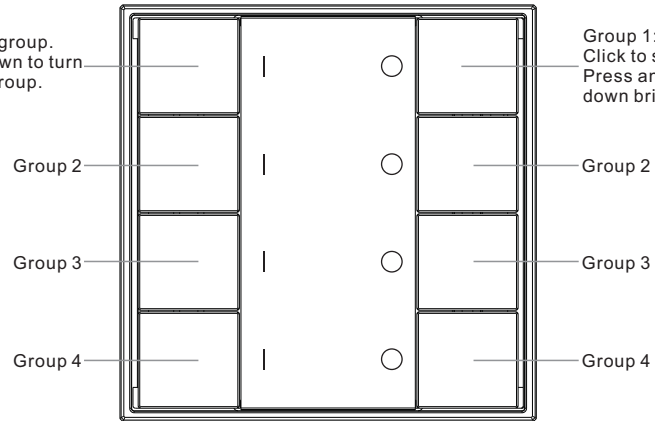
70030126



**Important:** Read All Instructions Prior to Installation

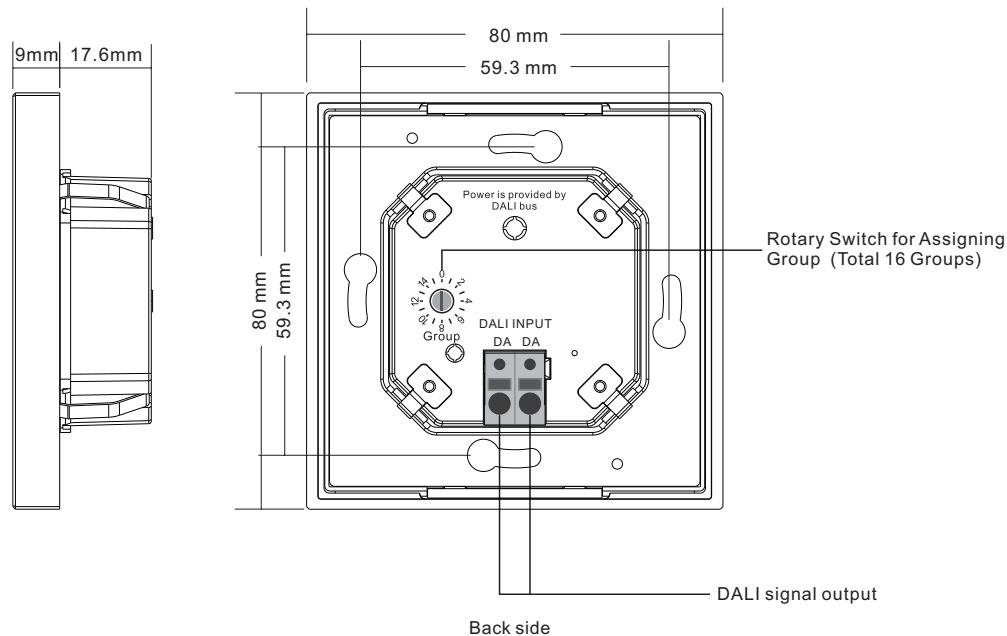
## Function introduction

Group 1:  
Click to switch on group.  
Press and hold down to turn  
up brightness of group.



Front side

Group 1:  
Click to switch off group.  
Press and hold down to turn  
down brightness of group.

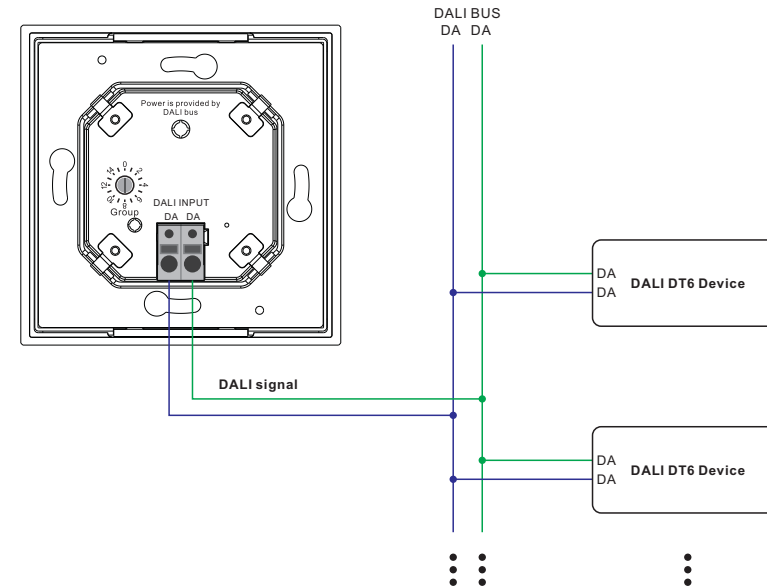


## Product Data

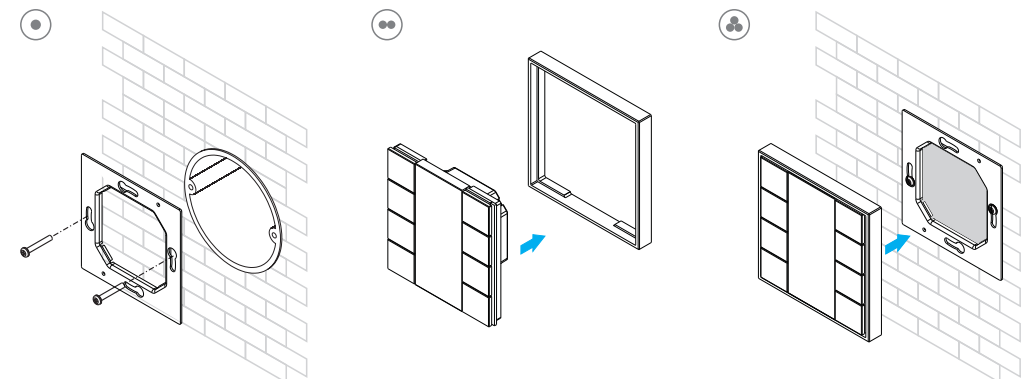
Output	DALI signal
Power Supply	Supply By DALI Bus
Operation Current	30mA
Operating temperature	0-40°C
Relative humidity	8% to 80%
Dimensions	80x80x26.6mm

- DALI DT6 push button controller
- Ultra slim and luxury design
- Material and finishing color can be customized
- With back lighting design, easy to find even in dark night
- DALI bus powered, no extra power supply required
- Each channel DALI bus can install multiple controllers
- Enables to select and control 4 DALI groups from total 16 DALI groups
- Easy installation with mounting bracket
- Waterproof grade: IP20

## Wiring Diagram



## Installation



## Safety & Warnings

- DO NOT installed with power applied to device.
- DO NOT expose the device to moisture.

Operation

1. Set starting Group number via rotary switch on the back: (0-15 selectable)

• This DALI touch panel controller enables dimming commands to be sent to 4 Groups of devices on the DALI circuit. A rotary switch on the back is used to select Groups you would like to control and set the starting Group number, and total 16 Groups (0-15) can be selected.

• When the rotary switch arrow position is at 0, group 1 buttons control all DALI devices on the circuit via broadcast, group 2 buttons control DALI Group 0, group 3 controls Group 1, and group 4 controls Group 2.

• When the rotary switch arrow position is at X except 0 (1-12), group 1 controls DALI Group X-1, group 2 controls Group X, group 3 controls Group X+1, and group 4 controls Group X+2.

• When the rotary switch arrow position is at 13, group 1 controls devices in DALI Group 12, group 2 controls devices in DALI Group 13, group 3 controls devices in DALI Group 14, and group 4 controls all devices through broadcast.

• When the rotary switch arrow position is at 14, group 1 controls devices in DALI Group 13, group 2 controls devices in DALI Group 14, Group 3 controls all devices through broadcast, group 4 controls devices in DALI Group 0.

• When the rotary switch arrow position is at 15, group 1 controls devices in DALI Group 14, group 2 controls all devices through broadcast, group 3 controls devices in DALI Group 0, group 4 controls DALI group 1.

**Note: all DALI slaves on the circuit shall be assigned to one or more DALI groups by DALI master first.**  
Please refer to the detailed Group setting table as follows:

Rotary Switch Position	0	1	2	3	4	5	6	7	8	9	10	11	12	13	14	15
DALI Group for Group 1 Buttons	Broadcast	0	1	2	3	4	5	6	7	8	9	10	11	12	13	14
DALI Group for Group 2 Buttons	0	1	2	3	4	5	6	7	8	9	10	11	12	13	14	Broadcast
DALI Group for Group 3 Buttons	1	2	3	4	5	6	7	8	9	10	11	12	13	14	Broadcast	0
DALI Group for Group 4 Buttons	2	3	4	5	6	7	8	9	10	11	12	13	14	Broadcast	0	1