

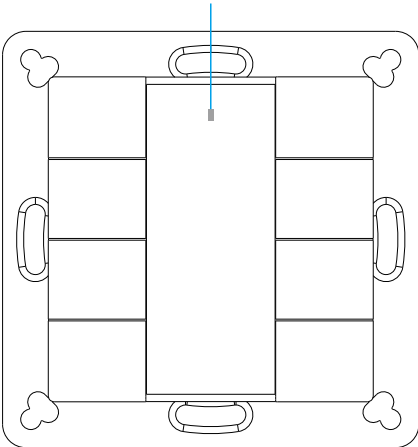
Multi-functional 8-Key Push Button DALI Wall Switch



Important: Read All Instructions Prior to Installation

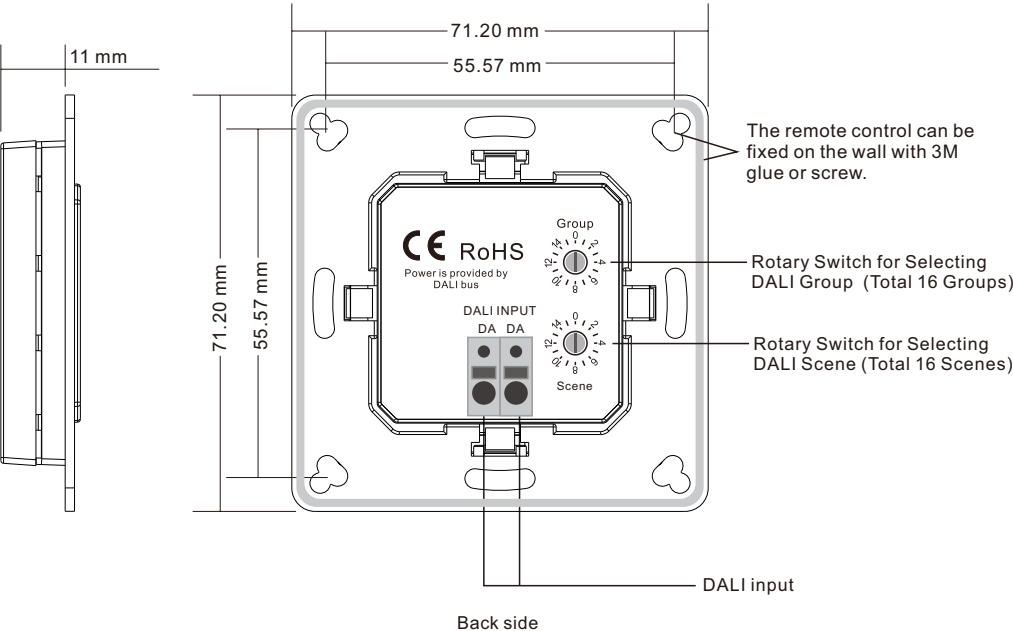
Function introduction

Working indication LED, blinks when operate the push buttons



Function of the buttons depends on the operating mode selected.

Front side



Back side

Product Features

- Multi-functional 8-key push button DALI wall switch
- DALI-2 control device according to IEC62386-101, IEC62386-103, IEC62386-301
- Provides 8 push button instances
- DALI push button switch for dimming, color temperature, color and scene control
- Individual DALI Commands and operating modes can be assigned to the push buttons
- Multiple operating modes can be set by the DALI-2 controller using command SET OPERATING MODE (DTR0)
- Instance mode for sending DALI-2 push button event messages - integration in standard DALI-2 control systems
- DIM mode, directly send DALI commands to DALI bus
- CCT mode, directly send DALI commands to DALI bus
- RGBW mode, directly send DALI commands to DALI bus
- RGBWA mode, directly send DALI commands to DALI bus
- Scene mode, directly send DALI commands to DALI bus
- Multi-master capable, multiple modules can be installed on one DALI line
- Factory default setting is DALI-2 instance mode for sending DALI-2 button status event messages
- DALI bus powered, no extra power supply required
- Easy configuration via DALI-2 compliant central controller
- Compatible with universal 55mm frames

Product Data

DALI Interface

Input Type	DALI
Marking	DA, DA
Input Voltage Range	12VDC - 22.5VDC (according IEC62368-101)
Typ. Current Consumption DALI (at 16.5V)	2mA
Max. Current Consumption DALI (Inrush Current at 22.5V)	10mA
Number of Addresses for DALI Control Gear	DALI
Number of Addresses for DALI Control Devices	8 programmable push buttons

General Data

Dimensions (L x W x H)	71.2mm x 71.2mm x 11mm
Mounting	Wall Mounting or on Conduit Box
Max. casing temperature Tc	75°C
Expected Life Time @Tc	50,000H
Protection Class	II in Intended Use
Protection Degree Housing	IP20
Protection Degree Terminals	IP20
Function	Configurable
Start-up Time	<150ms

Terminals

Connector Type	Push-In
Wire Size Solid Core	0.2 - 1.5 mm ² (AWG26 - AWG16)
Wire Size Fine Core	0.2 - 1.5 mm ² (AWG26 - AWG16)
Wire Size Using Wire End Ferrule	0.25 - 1.0 mm ²
Stripping Length	9 - 10 mm / 0.35 - 0.39 inch
Release Connector	Push Button

Environment Conditions

Storing Temperature	-20°C~+50°C
Working Ambient Temperature	-20°C~+50°C
Relative Humidity	8% - 80%

Standards

DALI	IEC62386-101:2014 IEC62386-103:2014 IEC62386-301 IEC62386-332
EMC	EN 61547 EN 50015 / IEC CISPR15
Safety	EN 61347-2-11 EN 61347-1
Markings	DALI-2, CE

Safety & Warnings

- DO NOT installed with power applied to device.
- DO NOT expose the device to moisture.

Application & Function

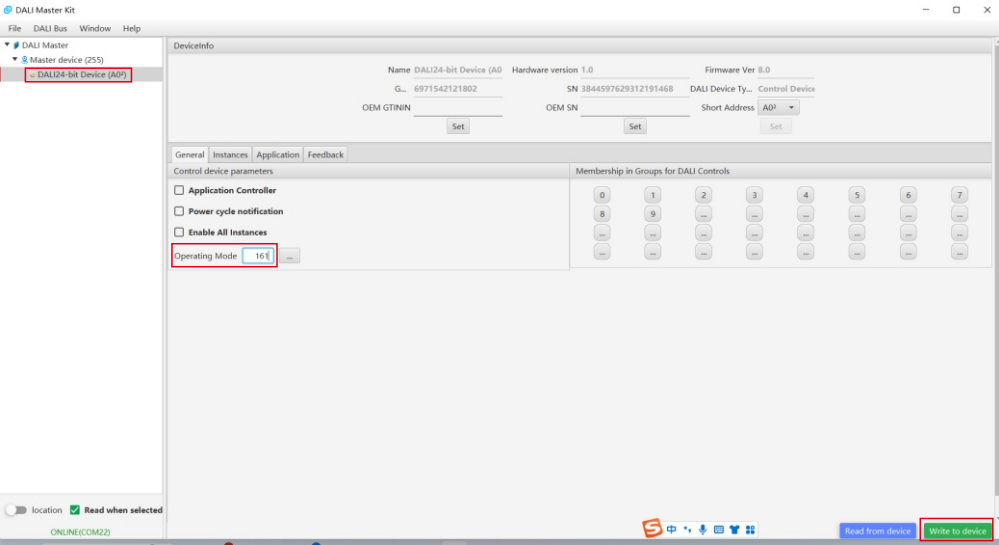
The DALI-2 switch supports different operating modes, it can work as a standard DALI-2 input device and send event messages to the DALI-2 control system, or directly send DALI commands to the DALI bus. The function is determined by the selection of the operating mode. Multiple operating modes can be set by the DALI-2 application controller using command SET OPERATING MODE (DTR0).

Set Operating Mode (DTR0)

- 0X00(0): Instance mode for sending DALI-2 push button status event messages (factory default)
- 0XA1(161): DIM+Scene mode, directly send DALI commands to DALI bus
- 0XA2(162): DIM+Group mode, directly send DALI commands to DALI bus
- 0XA3(163): Scene mode, directly send DALI commands to DALI bus
- 0XA4(164): CCT+Scene mode, directly send DALI commands to DALI bus
- 0XA5(165): RGB+Scene mode, directly send DALI commands to DALI bus
- 0XA6(166): RGBW+Scene mode, directly send DALI commands to DALI bus
- 0XA7(167): RGBWA+Scene mode, directly send DALI commands to DALI bus
- 0XA8(168): DIM+Group+Scene mode, directly send DALI commands to DALI bus

Set Operating Mode via USB DALI Master Controller

The DALI-2 switch supports different operating modes, the operating mode can be set via USB DALI Master Controller and DALI Master Kit PC software, please refer to the following diagram for detailed setting.



- Step 1:** Select the DALI push button device you would like to set on the left, e.g. "DALI24-bit Device (A02)".
- Step 2:** Enter the operating mode you would like to select in decimal, e.g. "161".
- Step 3:** Write the setting into the DALI push button by click on the "Write to device" button.

Instance Mode 0X00 (Factory default setting)

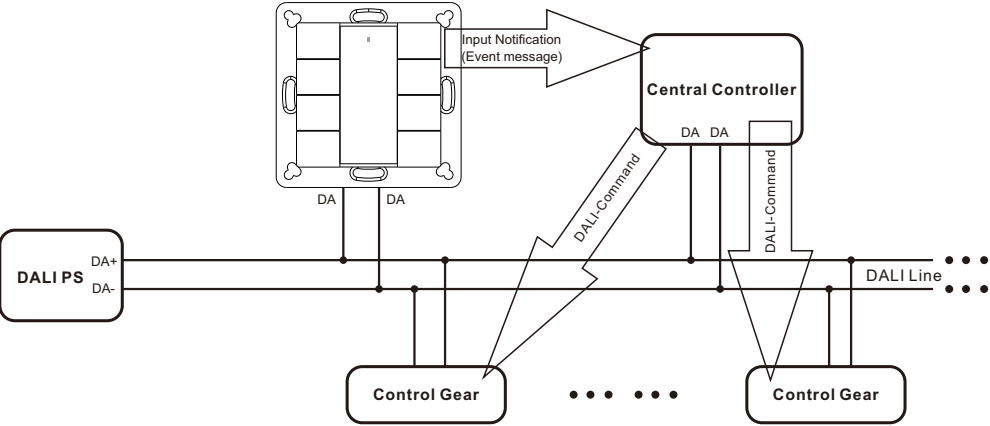
The DALI Switch can be used as input device for the integration in DALI-2 compliant central lighting control systems. In this mode each input ("instance") informs about changes by using so called "input notifications". These event-messages can be evaluated by other controllers on the DALI-line e.g. as trigger for commands sent to luminaires. The DALI-Switch provides 8 instances of type 1 (input device – push button). Instance 1-8: Push Button, Instance Type 1 (according IEC62386-301, Input Devices – Push Button) According to the standard the following INPUT NOTIFICATIONS are supported:

Event name	Event Information	Description
Button released	00 0000 0000b	The button is released
Button pressed	00 0000 0001b	The button is pressed
Short press	00 0000 0010b	The button is pressed and released, without being pressed quickly again (in case of double press enabled), or the button is pressed and quickly released (in case of double press is disabled)
Double press	00 0000 0101b	The button is pressed and released, quickly followed by another button press
Long press start	00 0000 1001b	The button is pressed without releasing it
Long press repeat	00 0000 1011b	Following a long press start condition the button is still pressed, the event occurs at regular intervals as long as the condition holds
Long press stop	00 0000 1100b	Following a long press start condition, the button is released
Button free	00 0000 1110b	The button has been stuck and is now released
Button stuck	00 0000 1111b	The button has been pressed for a very long time and is assumed stuck.

Additional instance parameters like event filter, event timings (short timer, double timer, repeat timer, stuck timer) can be configured according to IEC62386-301.

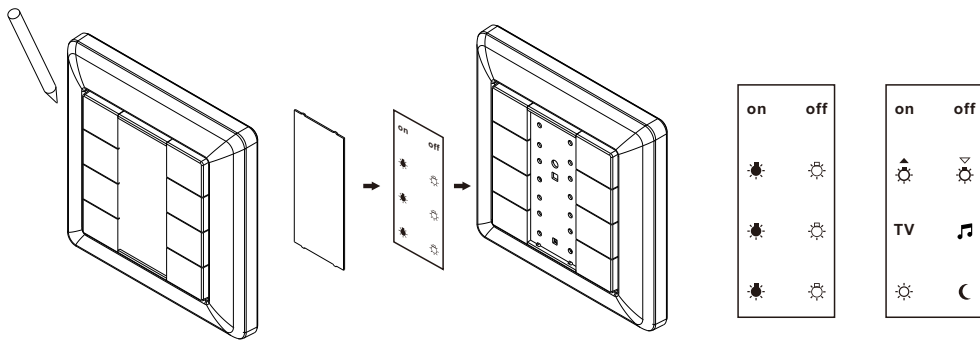
Application Diagram of Instance Mode

Integration in a system with DALI-2 compliant central control unit, push buttons results in input notifications (event messages)



Push Button Function Label

Push button function label can be printed and customized, to better indicate whatever functions configured to the push buttons. Please contact sales person to ask for the available customizable button function file in Excel format, which will generate corresponding label image after selecting the desired function for each button, just print it and install as follows:



Step 1: Remove the white color central cover plate using a sharp tool such as tweezers.

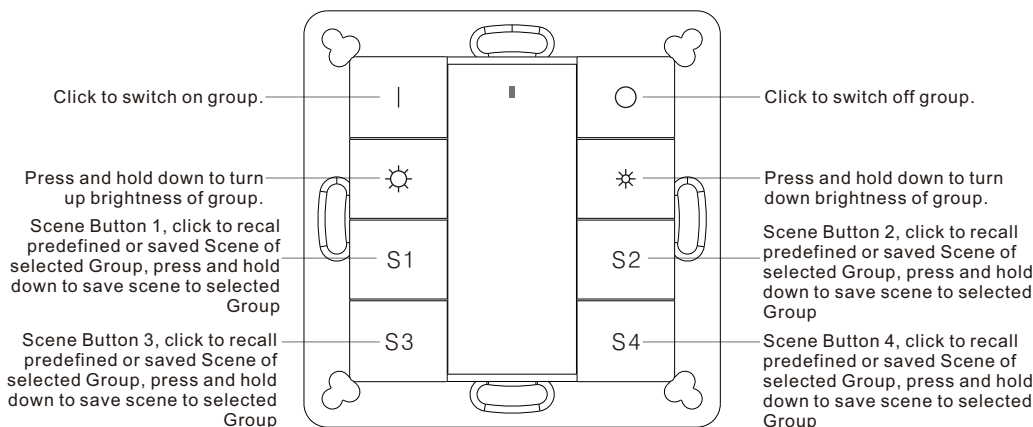
Step 2: Put the printed label into the central part.

Step 3: Install another transparent central cover plate attached with the product.

Two example labels

DIM+Scene mode 0XA1 (161)

1. When set as DIM+Scene mode 0XA1, the switch will directly send DALI commands to the DALI bus, the functions are as follows:



2. Set starting Group number via rotary switch on the back: (0-15 selectable)

- This DALI push button controller enables dimming commands to be sent to One Group of devices on the DALI circuit. A rotary switch on the back is used to select the DALI Group you would like to control and set the starting Group number, and total 16 Groups (0-15) can be selected.
- When the rotary switch arrow position is at 0, the controller controls all devices on DALI circuit through broadcast.
- When the rotary switch arrow position is at X except 0 (1-15), the controller controls devices in Group X-1.

For example: Rotary switch arrow at 1, the controller controls devices in Group 0. Rotary switch arrow at 15, the controller controls devices in Group 14.

Please refer to the detailed Group setting table as follows:

Rotary Switch Position	0	1	2	3	4	5	6	7	8	9	10	11	12	13	14	15
DALI Group Selected	Broadcast	0	1	2	3	4	5	6	7	8	9	10	11	12	13	14

Note: please assign the DALI drivers on DALI circuit to a DALI group(0-15) with DALI master controller first.

3. Set starting Scene number via rotary switch on the back: (0-15 selectable)

- This DALI push button controller enables Scene selection commands for up to four Scenes to be sent to the DALI circuit by 4 Scene buttons S1, S2, S3, S4. A rotary switch on the back is used to select Scenes you would like to control and set the starting scene number, and total 16 Scenes (0-15) can be selected.

- When the rotary switch arrow position is at X (0-15), Scene button S1 controls Scene X, S2 controls Scene X+1, S3 controls Scene X+2, S4 controls Scene X+3.

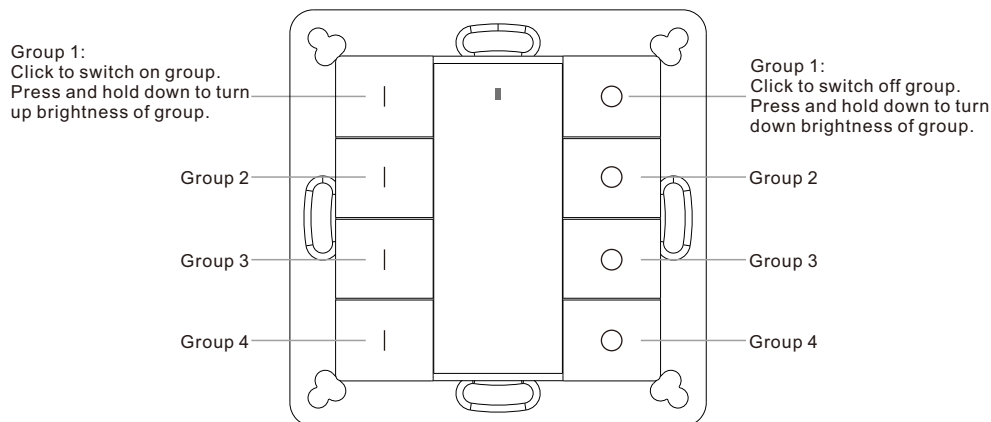
For example: Rotary switch arrow at 0, button S1 controls Scene 0, S2 controls Scene 1, S3 controls Scene 2, S4 controls Scene 3. Rotary switch arrow at 15, button S1 controls Scene 15, S2 controls Scene 0, S3 controls Scene 1, S4 controls Scene 2.

Please refer to the detailed Scene setting table as follows:

Rotary Switch Position	0	1	2	3	4	5	6	7	8	9	10	11	12	13	14	15
DALI Scene assigned to S1	0	1	2	3	4	5	6	7	8	9	10	11	12	13	14	15
DALI Scene assigned to S2	1	2	3	4	5	6	7	8	9	10	11	12	13	14	15	0
DALI Scene assigned to S3	2	3	4	5	6	7	8	9	10	11	12	13	14	15	0	1
DALI Scene assigned to S4	3	4	5	6	7	8	9	10	11	12	13	14	15	0	1	2

DIM+Group mode 0XA2 (162)

1. When set as DIM+Group mode 0XA2, the switch will directly send DALI commands to the DALI bus, the functions are as follows:



2. Set starting Group number via rotary switch on the back: (0-15 selectable)

- This DALI touch panel controller enables dimming commands to be sent to 4 Groups of devices on the DALI circuit. A rotary switch on the back is used to select Groups you would like to control and set the starting Group number, and total 16 Groups (0-15) can be selected.

- When the rotary switch arrow position is at 0, group 1 buttons control all DALI devices on the circuit via broadcast, group 2 buttons control DALI Group 0, group 3 controls Group 1, and group 4 controls Group 2.

- When the rotary switch arrow position is at X except 0 (1-12), group 1 controls DALI Group X-1, group 2 controls Group X, group 3 controls Group X+1, and group 4 controls Group X+2.

- When the rotary switch arrow position is at 13, group 1 controls devices in DALI Group 12, group 2 controls devices in DALI Group 13, group 3 controls devices in DALI Group 14, and group 4 controls all devices through broadcast.

- When the rotary switch arrow position is at 14, group 1 controls devices in DALI Group 13, group 2 controls devices in DALI Group 14, Group 3 controls all devices through broadcast, group 4 controls devices in DALI Group 0.

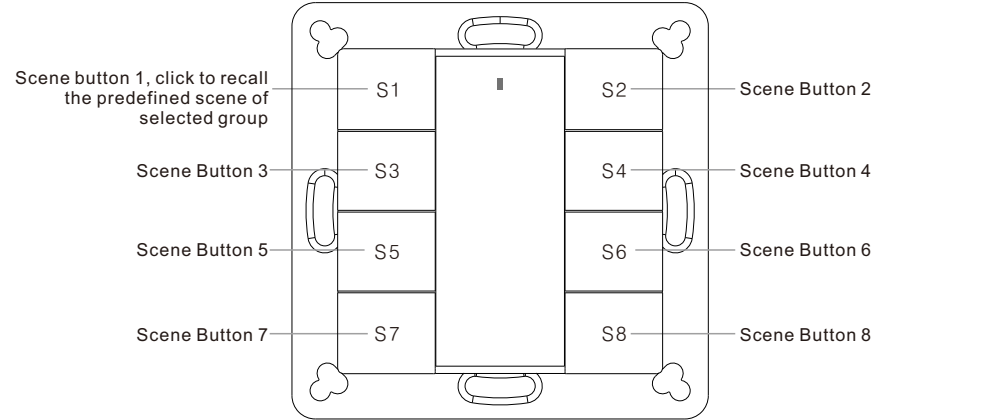
- When the rotary switch arrow position is at 15, group 1 controls devices in DALI Group 14, group 2 controls all devices through broadcast, group 3 controls devices in DALI Group 0, group 4 controls DALI group 1.

Note: all DALI drivers on the circuit shall be assigned to one or more DALI groups by DALI master first. Please refer to the detailed Group setting table as follows:

Rotary Switch Position	0	1	2	3	4	5	6	7	8	9	10	11	12	13	14	15
DALI Group for Group 1 Buttons	Broadcast	0	1	2	3	4	5	6	7	8	9	10	11	12	13	14
DALI Group for Group 2 Buttons	0	1	2	3	4	5	6	7	8	9	10	11	12	13	14	Broadcast
DALI Group for Group 3 Buttons	1	2	3	4	5	6	7	8	9	10	11	12	13	14	Broadcast	0
DALI Group for Group 4 Buttons	2	3	4	5	6	7	8	9	10	11	12	13	14	Broadcast	0	1

Scene mode 0XA3 (163)

1. When set as Scene mode 0XA3, the switch will directly send DALI commands to the DALI bus, the functions are as follows:



2. Set starting Group number via rotary switch on the back: (0-15 selectable)
- This DALI push button controller enables scene selection commands to be sent to One Group of devices on the DALI circuit. A rotary switch on the back is used to select the DALI Group you would like to control and set the starting Group number, and total 16 Groups (0-15) can be selected.
 - When the rotary switch arrow position is at 0, the controller controls all devices on DALI circuit through broadcast.
 - When the rotary switch arrow position is at X except 0 (1-15), the controller controls devices in Group X-1.

For example: Rotary switch arrow at 1, the controller controls devices in Group 0. Rotary switch arrow at 15, the controller controls devices in Group 14.

Please refer to the detailed Group setting table as follows:

Rotary Switch Position	0	1	2	3	4	5	6	7	8	9	10	11	12	13	14	15
DALI Group Selected	Broadcast	0	1	2	3	4	5	6	7	8	9	10	11	12	13	14

Note: please assign the DALI drivers on DALI circuit to a DALI group(0-15) with DALI master controller first.

3. Set starting Scene number via rotary switch on the back: (0-15 selectable)
- This DALI push button controller enables Scene selection commands for up to eight Scenes to be sent to the DALI circuit by 8 Scene buttons S1, S2, S3, S4, S5, S6, S7, S8. A rotary switch on the back is used to select Scenes you would like to control and set the starting scene number, and total 16 Scenes (0-15) can be selected.

When the rotary switch arrow position is at X (0-15), Scene button S1 controls DALI Scene X, S2 controls DALI Scene X+1, ..., S8 controls DALI Scene X+7.

For example: Rotary switch arrow at 0, button S1 controls DALI Scene 0, S2 controls DALI Scene 1, ..., S8 controls DALI Scene 7. Rotary switch arrow at 15, button S1 controls DALI Scene 15, S2 controls DALI Scene 0, ..., S8 controls DALI Scene 6.

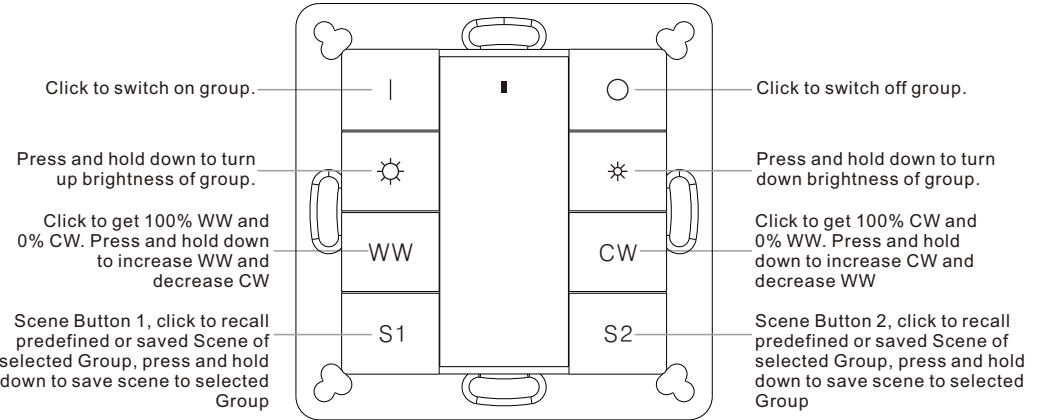
Please refer to the detailed Scene setting table as follows:

Rotary Switch Position	0	1	2	3	4	5	6	7	8	9	10	11	12	13	14	15
DALI Scene assigned to S1	0	1	2	3	4	5	6	7	8	9	10	11	12	13	14	15
DALI Scene assigned to S2	1	2	3	4	5	6	7	8	9	10	11	12	13	14	15	0
DALI Scene assigned to S3	2	3	4	5	6	7	8	9	10	11	12	13	14	15	0	1
DALI Scene assigned to S4	3	4	5	6	7	8	9	10	11	12	13	14	15	0	1	2
DALI Scene assigned to S5	4	5	6	7	8	9	10	11	12	13	14	15	0	1	2	3
DALI Scene assigned to S6	5	6	7	8	9	10	11	12	13	14	15	0	1	2	3	4
DALI Scene assigned to S7	6	7	8	9	10	11	12	13	14	15	0	1	2	3	4	5
DALI Scene assigned to S8	7	8	9	10	11	12	13	14	15	0	1	2	3	4	5	6

Note: please predefine DALI scenes(0-15) to the DALI drivers on DALI circuit with DALI master controller first.

CCT+Scene mode 0XA4 (164)

1. When set as CCT+Scene mode 0XA4, the switch will directly send DALI commands to the DALI bus, the functions are as follows:



2. Set starting Group number via rotary switch on the back: (0-15 selectable)
- This DALI push button controller enables dimming commands and DT8 commands to be sent to One Group of devices on the DALI circuit. A rotary switch on the back is used to select the DALI Group you would like to control and set the starting Group number, and total 16 Groups (0-15) can be selected.
 - When the rotary switch arrow position is at 0, the controller controls all devices on DALI circuit through broadcast.
 - When the rotary switch arrow position is at X except 0 (1-15), the controller controls devices in Group X-1.

For example: Rotary switch arrow at 1, the controller controls devices in Group 0. Rotary switch arrow at 15, the controller controls devices in Group 14.

Please refer to the detailed Group setting table as follows:

Rotary Switch Position	0	1	2	3	4	5	6	7	8	9	10	11	12	13	14	15
DALI Group Selected	Broadcast	0	1	2	3	4	5	6	7	8	9	10	11	12	13	14

Note: please assign the DALI drivers on DALI circuit to a DALI group(0-15) with DALI master controller first.

3. Set starting Scene number via rotary switch on the back: (0-15 selectable)
- This DALI push button controller enables Scene selection commands for up to four Scenes to be sent to the DALI circuit by 2 Scene buttons S1, S2. A rotary switch on the back is used to select Scenes you would like to control and set the starting scene number, and total 16 Scenes (0-15) can be selected.
 - When the rotary switch arrow position is at X (0-15), Scene button S1 controls DALI Scene X, S2 controls DALI Scene X+1.

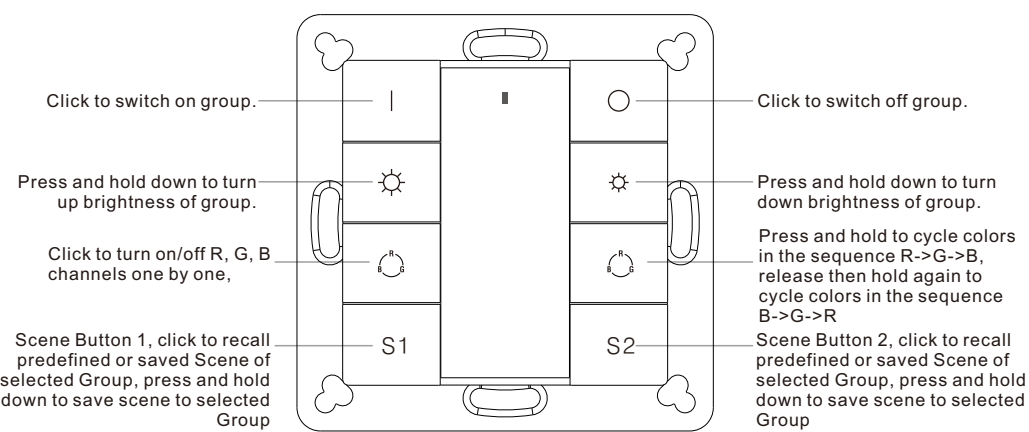
For example: Rotary switch arrow at 0, button S1 controls DALI Scene 0, S2 controls DALI Scene 1. Rotary switch arrow at 15, button S1 controls DALI Scene 15, S2 controls DALI Scene 0.

Please refer to the detailed Scene setting table as follows:

Rotary Switch Position	0	1	2	3	4	5	6	7	8	9	10	11	12	13	14	15
DALI Scene assigned to S1	0	1	2	3	4	5	6	7	8	9	10	11	12	13	14	15
DALI Scene assigned to S2	1	2	3	4	5	6	7	8	9	10	11	12	13	14	15	0

RGB+Scene mode 0XA5 (165)

1. When set as RGB+Scene mode 0XA5, the switch will directly send DALI commands to the DALI bus, the functions are as follows:



2. Set starting Group number via rotary switch on the back: (0-15 selectable)
- This DALI push button controller enables dimming commands and DT8 commands to be sent to One Group of devices on the DALI circuit. A rotary switch on the back is used to select the DALI Group you would like to control and set the starting Group number, and total 16 Groups (0-15) can be selected.
 - When the rotary switch arrow position is at 0, the controller controls all devices on DALI circuit through broadcast.
 - When the rotary switch arrow position is at X except 0 (1-15), the controller controls devices in Group X-1.

For example: Rotary switch arrow at 1, the controller controls devices in Group 0. Rotary switch arrow at 15, the controller controls devices in Group 14.

Please refer to the detailed Group setting table as follows:

Rotary Switch Position	0	1	2	3	4	5	6	7	8	9	10	11	12	13	14	15
DALI Group Selected	Broadcast	0	1	2	3	4	5	6	7	8	9	10	11	12	13	14

Note: please assign the DALI drivers on DALI circuit to a DALI group(0-15) with DALI master controller first.

3. Set starting Scene number via rotary switch on the back: (0-15 selectable)
- This DALI push button controller enables Scene selection commands for up to four Scenes to be sent to the DALI circuit by 2 Scene buttons S1, S2. A rotary switch on the back is used to select Scenes you would like to control and set the starting scene number, and total 16 Scenes (0-15) can be selected.
 - When the rotary switch arrow position is at X (0-15), Scene button S1 controls DALI Scene X, S2 controls DALI Scene X+1.

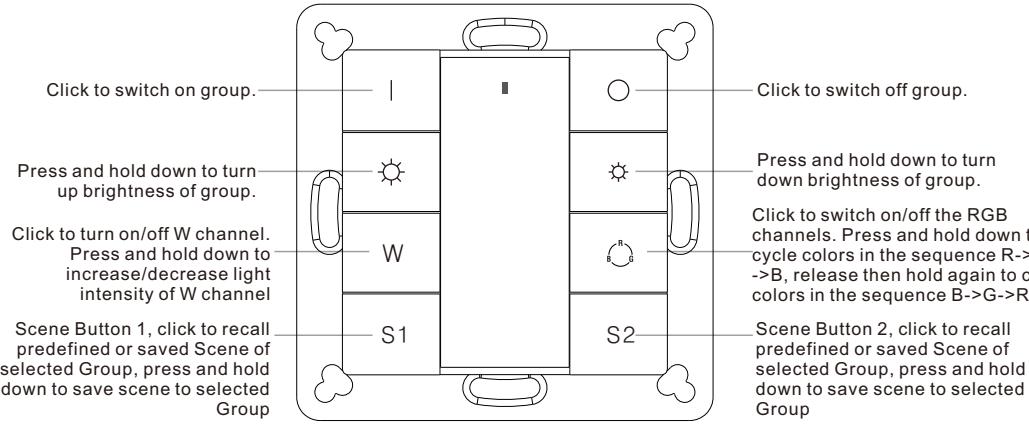
For example: Rotary switch arrow at 0, button S1 controls DALI Scene 0, S2 controls DALI Scene 1. Rotary switch arrow at 15, button S1 controls DALI Scene 15, S2 controls DALI Scene 0.

Please refer to the detailed Scene setting table as follows:

Rotary Switch Position	0	1	2	3	4	5	6	7	8	9	10	11	12	13	14	15
DALI Scene assigned to S1	0	1	2	3	4	5	6	7	8	9	10	11	12	13	14	15
DALI Scene assigned to S2	1	2	3	4	5	6	7	8	9	10	11	12	13	14	15	0

RGBW+Scene mode 0XA6 (166)

1. When set as RGBW+Scene mode 0XA6, the switch will directly send DALI commands to the DALI bus, the functions are as follows:



2. Set starting Group number via rotary switch on the back: (0-15 selectable)
- This DALI push button controller enables dimming commands and DT8 commands to be sent to One Group of devices on the DALI circuit. A rotary switch on the back is used to select the DALI Group you would like to control and set the starting Group number, and total 16 Groups (0-15) can be selected.
 - When the rotary switch arrow position is at 0, the controller controls all devices on DALI circuit through broadcast.
 - When the rotary switch arrow position is at X except 0 (1-15), the controller controls devices in Group X-1.

For example: Rotary switch arrow at 1, the controller controls devices in Group 0. Rotary switch arrow at 15, the controller controls devices in Group 14.

Please refer to the detailed Group setting table as follows:

Rotary Switch Position	0	1	2	3	4	5	6	7	8	9	10	11	12	13	14	15
DALI Group Selected	Broadcast	0	1	2	3	4	5	6	7	8	9	10	11	12	13	14

Note: please assign the DALI drivers on DALI circuit to a DALI group(0-15) with DALI master controller first.

3. Set starting Scene number via rotary switch on the back: (0-15 selectable)
- This DALI push button controller enables Scene selection commands for up to four Scenes to be sent to the DALI circuit by 2 Scene buttons S1, S2. A rotary switch on the back is used to select Scenes you would like to control and set the starting scene number, and total 16 Scenes (0-15) can be selected.
 - When the rotary switch arrow position is at X (0-15), Scene button S1 controls DALI Scene X, S2 controls DALI Scene X+1.

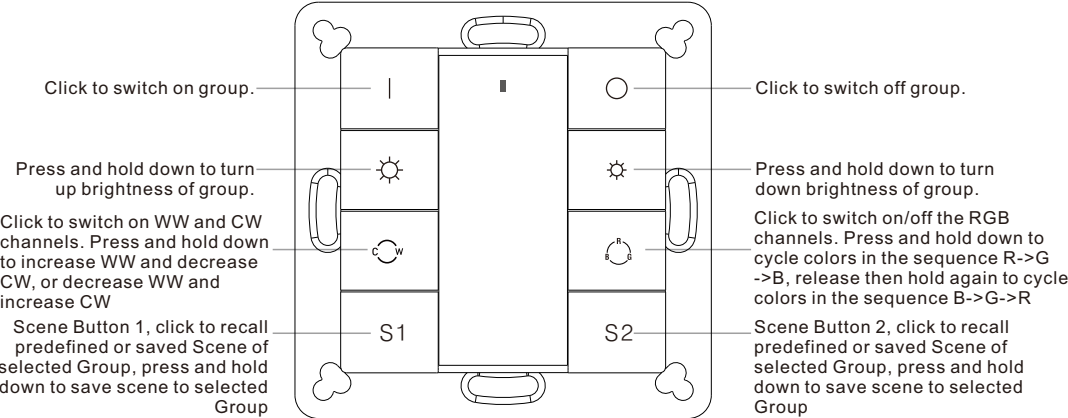
For example: Rotary switch arrow at 0, button S1 controls DALI Scene 0, S2 controls DALI Scene 1. Rotary switch arrow at 15, button S1 controls DALI Scene 15, S2 controls DALI Scene 0.

Please refer to the detailed Scene setting table as follows:

Rotary Switch Position	0	1	2	3	4	5	6	7	8	9	10	11	12	13	14	15
DALI Scene assigned to S1	0	1	2	3	4	5	6	7	8	9	10	11	12	13	14	15
DALI Scene assigned to S2	1	2	3	4	5	6	7	8	9	10	11	12	13	14	15	0

RGBWA+Scene mode 0XA7 (167)

1. When set as RGBWA+Scene mode 0XA7, the switch will directly send DALI commands to the DALI bus, the functions are as follows:



2. Set starting Group number via rotary switch on the back: (0-15 selectable)
- This DALI push button controller enables dimming commands and DT8 commands to be sent to One Group of devices on the DALI circuit. A rotary switch on the back is used to select the DALI Group you would like to control and set the starting Group number, and total 16 Groups (0-15) can be selected.
 - When the rotary switch arrow position is at 0, the controller controls all devices on DALI circuit through broadcast.
 - When the rotary switch arrow position is at X except 0 (1-15), the controller controls devices in Group X-1.

For example: Rotary switch arrow at 1, the controller controls devices in Group 0. Rotary switch arrow at 15, the controller controls devices in Group 14.

Please refer to the detailed Group setting table as follows:

Rotary Switch Position	0	1	2	3	4	5	6	7	8	9	10	11	12	13	14	15
DALI Group Selected	Broadcast	0	1	2	3	4	5	6	7	8	9	10	11	12	13	14

Note: please assign the DALI drivers on DALI circuit to a DALI group(0-15) with DALI master controller first.

3. Set starting Scene number via rotary switch on the back: (0-15 selectable)
- This DALI push button controller enables Scene selection commands for up to four Scenes to be sent to the DALI circuit by 2 Scene buttons S1, S2. A rotary switch on the back is used to select Scenes you would like to control and set the starting scene number, and total 16 Scenes (0-15) can be selected.
 - When the rotary switch arrow position is at X (0-15), Scene button S1 controls DALI Scene X, S2 controls DALI Scene X+1.

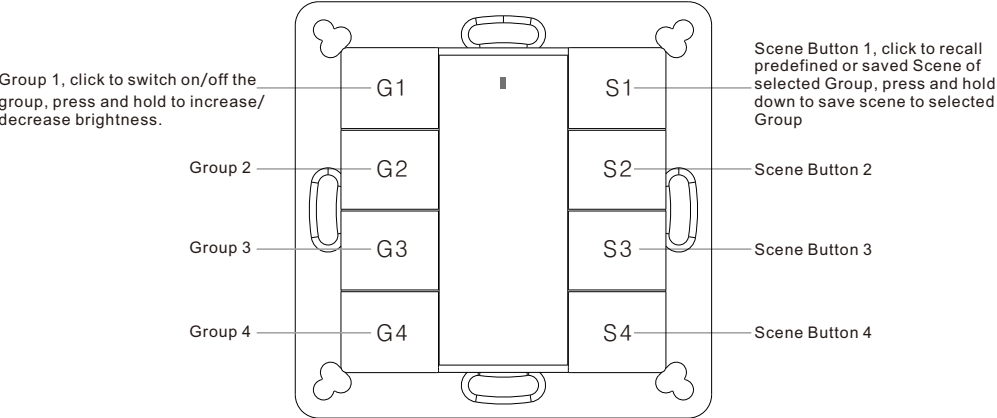
For example: Rotary switch arrow at 0, button S1 controls DALI Scene 0, S2 controls DALI Scene 1. Rotary switch arrow at 15, button S1 controls DALI Scene 15, S2 controls DALI Scene 0.

Please refer to the detailed Scene setting table as follows:

Rotary Switch Position	0	1	2	3	4	5	6	7	8	9	10	11	12	13	14	15
DALI Scene assigned to S1	0	1	2	3	4	5	6	7	8	9	10	11	12	13	14	15
DALI Scene assigned to S2	1	2	3	4	5	6	7	8	9	10	11	12	13	14	15	0

DIM+Group+Scene mode 0XA8 (168)

1. When set as DIM+Group+Scene mode 0XA8, the switch will directly send DALI commands to the DALI bus, the functions are as follows:



2. Set starting Group number via rotary switch on the back: (0-15 selectable)

• This DALI touch panel controller enables dimming commands to be sent to 4 Groups of devices on the DALI circuit. A rotary switch on the back is used to select Groups you would like to control and set the starting Group number, and total 16 Groups (0-15) can be selected.

• When the rotary switch arrow position is at 0, group 1 buttons control all DALI devices on the circuit via broadcast, group 2 buttons control DALI Group 0, group 3 controls Group 1, and group 4 controls Group 2.

• When the rotary switch arrow position is at X except 0 (1-12), group 1 controls DALI Group X-1, group 2 controls Group X, group 3 controls Group X+1, and group 4 controls Group X+2.

• When the rotary switch arrow position is at 13, group 1 controls devices in DALI Group 12, group 2 controls devices in DALI Group 13, group 3 controls devices in DALI Group 14, and group 4 controls all devices through broadcast.

• When the rotary switch arrow position is at 14, group 1 controls devices in DALI Group 13, group 2 controls devices in DALI Group 14, Group 3 controls all devices through broadcast, group 4 controls devices in DALI Group 0.

• When the rotary switch arrow position is at 15, group 1 controls devices in DALI Group 14, group 2 controls all devices through broadcast, group 3 controls devices in DALI Group 0, group 4 controls DALI group 1.

Note: all DALI drivers on the circuit shall be assigned to one or more DALI groups by DALI master first. Please refer to the detailed Group setting table as follows:

Rotary Switch Position	0	1	2	3	4	5	6	7	8	9	10	11	12	13	14	15
DALI Group for G1	Broadcast	0	1	2	3	4	5	6	7	8	9	10	11	12	13	14
DALI Group for G2	0	1	2	3	4	5	6	7	8	9	10	11	12	13	14	Broadcast
DALI Group for G3	1	2	3	4	5	6	7	8	9	10	11	12	13	14	Broadcast	0
DALI Group for G4	2	3	4	5	6	7	8	9	10	11	12	13	14	Broadcast	0	1

3. Set starting Scene number via rotary switch on the back: (0-15 selectable)

• This DALI push button controller enables Scene selection commands for up to four Scenes to be sent to the DALI circuit by 4 Scene buttons S1, S2, S3, S4. A rotary switch on the back is used to select Scenes you would like to control and set the starting scene number, and total 16 Scenes (0-15) can be selected.

• When the rotary switch arrow position is at X (0-15), Scene button S1 controls Scene X, S2 controls Scene X+1, S3 controls Scene X+2, S4 controls Scene X+3.

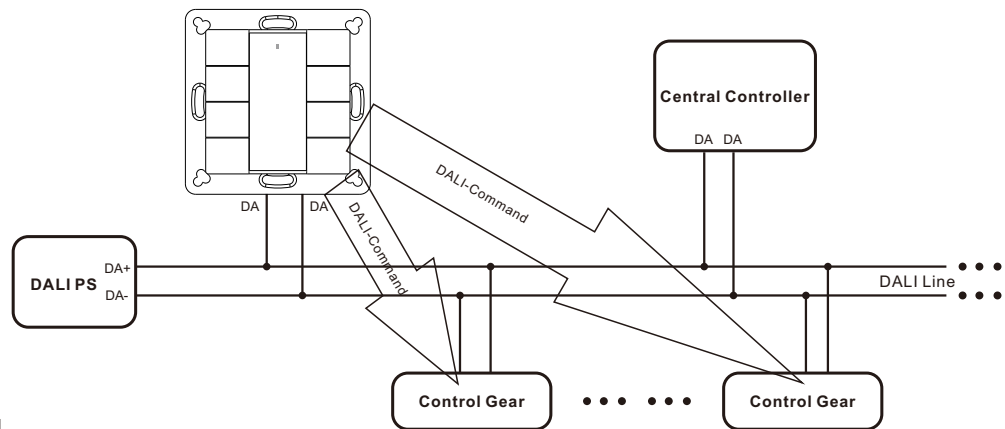
For example: Rotary switch arrow at 0, button S1 controls Scene 0, S2 controls Scene 1, S3 controls Scene 2, S4 controls Scene 3. Rotary switch arrow at 15, button S1 controls Scene 15, S2 controls Scene 0, S3 controls Scene 1, S4 controls Scene 2.

Please refer to the detailed Scene setting table as follows:

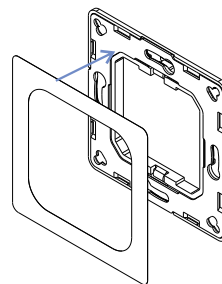
Rotary Switch Position	0	1	2	3	4	5	6	7	8	9	10	11	12	13	14	15
DALI Scene assigned to S1	0	1	2	3	4	5	6	7	8	9	10	11	12	13	14	15
DALI Scene assigned to S2	1	2	3	4	5	6	7	8	9	10	11	12	13	14	15	0
DALI Scene assigned to S3	2	3	4	5	6	7	8	9	10	11	12	13	14	15	0	1
DALI Scene assigned to S4	3	4	5	6	7	8	9	10	11	12	13	14	15	0	1	2

Application Diagram of Master Modes

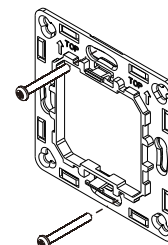
Under DIM, CCT, RGB, RGBW, RGBWA, Scene modes, the switch will directly send DALI commands to the DALI bus.



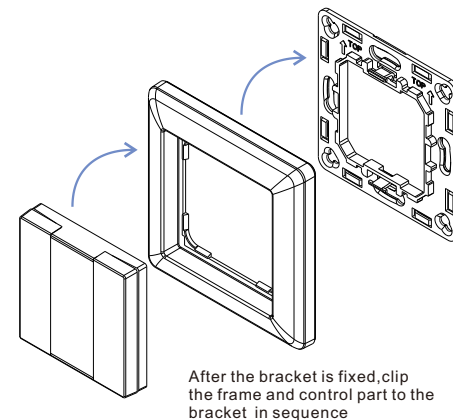
Installation



Method 1: Stick 3M glue on the back of the bracket and then stick the bracket to the wall



Method 2: Screw the bracket to the wall



Mounting

The key part of this controller is a universal, standard switch element that can be integrated in numerous frames by different manufactures as below list:

BERKER	S1, B1, B3, B7 glass
GIRA	Standard55, E2, Event, Esprit
JUNG	A500, Aplus
MERTEN	M-smart, M-Arc, M-Plan