

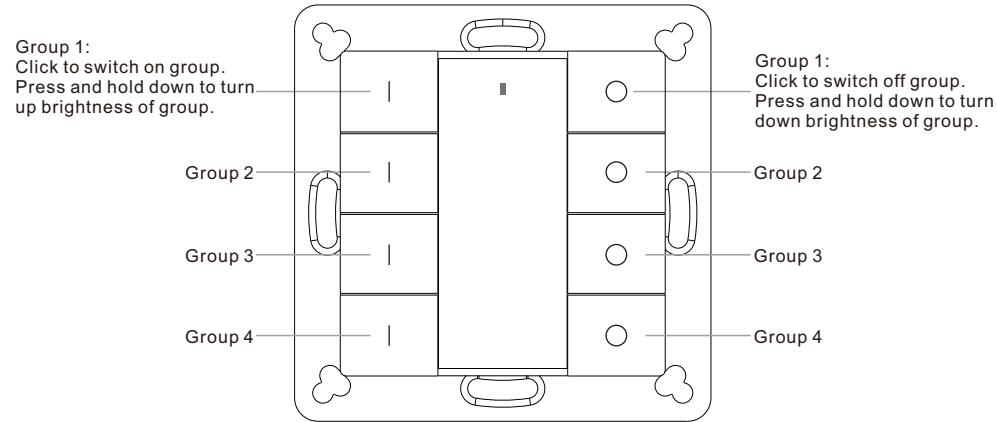
Push Button Single Color DALI Controller

70030011

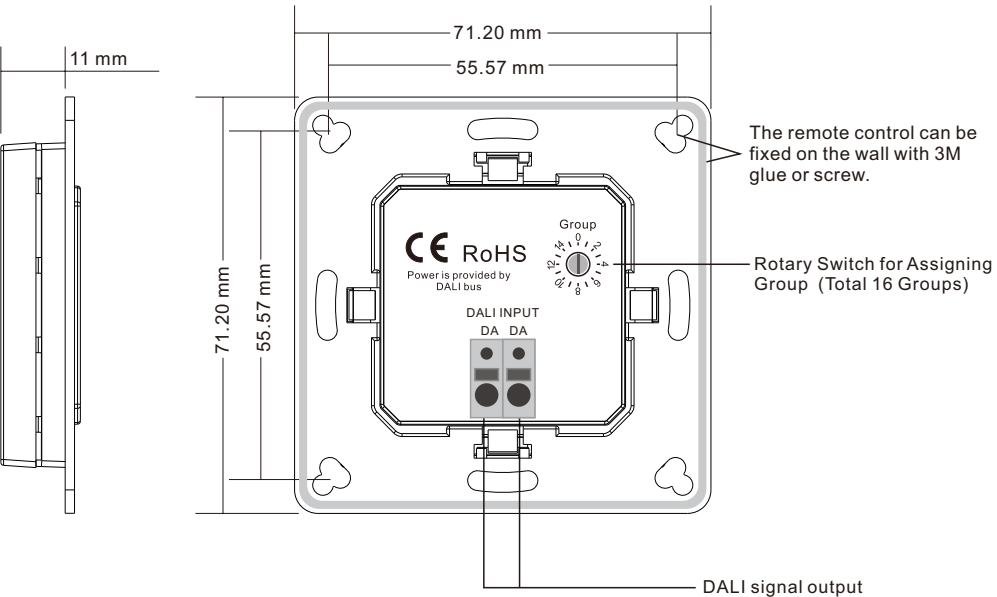


**Important:** Read All Instructions Prior to Installation

Function introduction



Front side



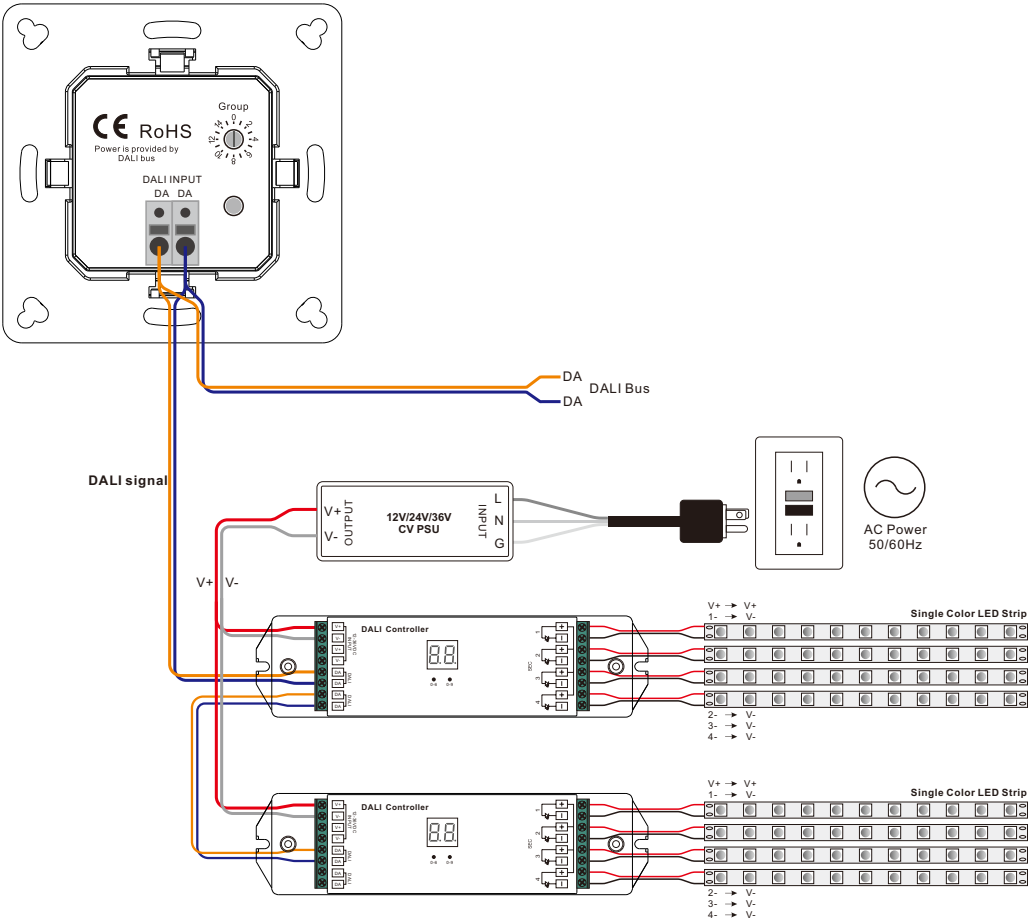
Back side

Product Data

|                       |                    |
|-----------------------|--------------------|
| Output                | DALI signal        |
| Power Supply          | Supply By DALI Bus |
| Operation Current     | 4mA                |
| Operating temperature | 0-40°C             |
| Relative humidity     | 8% to 80%          |
| Dimensions            | 71.2x71.2x13.6mm   |

- DALI DT6 push button controller
- DALI bus powered, no extra power supply required
- Each channel DALI bus can install multiple controllers
- Enables to select and control 4 DALI groups from total 16 DALI groups
- Compatible with universal 55mm frames
- Waterproof grade: IP20

Wiring Diagram



Safety & Warnings

- DO NOT installed with power applied to device.
- DO NOT expose the device to moisture.

Operation

1. Set starting Group number via rotary switch on the back: (0-15 selectable)

• This DALI touch panel controller enables dimming commands to be sent to 4 Groups of devices on the DALI circuit. A rotary switch on the back is used to select Groups you would like to control and set the starting Group number, and total 16 Groups (0-15) can be selected.

• When the rotary switch arrow position is at 0, group 1 buttons control all DALI devices on the circuit via broadcast, group 2 buttons control DALI Group 0, group 3 controls Group 1, and group 4 controls Group 2.

• When the rotary switch arrow position is at X except 0 (1-12), group 1 controls DALI Group X-1, group 2 controls Group X, group 3 controls Group X+1, and group 4 controls Group X+2.

• When the rotary switch arrow position is at 13, group 1 controls devices in DALI Group 12, group 2 controls devices in DALI Group 13, group 3 controls devices in DALI Group 14, and group 4 controls all devices through broadcast.

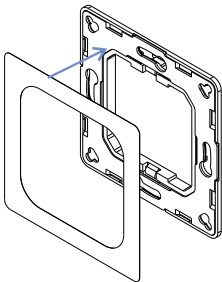
• When the rotary switch arrow position is at 14, group 1 controls devices in DALI Group 13, group 2 controls devices in DALI Group 14, Group 3 controls all devices through broadcast, group 4 controls devices in DALI Group 0.

• When the rotary switch arrow position is at 15, group 1 controls devices in DALI Group 14, group 2 controls all devices through broadcast, group 3 controls devices in DALI Group 0, group 4 controls DALI group 1.

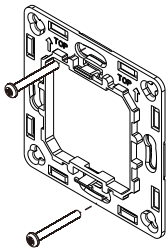
**Note: all DALI slaves on the circuit shall be assigned to one or more DALI groups by DALI master first.**  
Please refer to the detailed Group setting table as follows:

| Rotary Switch Position         | 0         | 1 | 2 | 3 | 4 | 5 | 6 | 7 | 8  | 9  | 10 | 11 | 12 | 13        | 14        | 15        |
|--------------------------------|-----------|---|---|---|---|---|---|---|----|----|----|----|----|-----------|-----------|-----------|
| DALI Group for Group 1 Buttons | Broadcast | 0 | 1 | 2 | 3 | 4 | 5 | 6 | 7  | 8  | 9  | 10 | 11 | 12        | 13        | 14        |
| DALI Group for Group 2 Buttons | 0         | 1 | 2 | 3 | 4 | 5 | 6 | 7 | 8  | 9  | 10 | 11 | 12 | 13        | 14        | Broadcast |
| DALI Group for Group 3 Buttons | 1         | 2 | 3 | 4 | 5 | 6 | 7 | 8 | 9  | 10 | 11 | 12 | 13 | 14        | Broadcast | 0         |
| DALI Group for Group 4 Buttons | 2         | 3 | 4 | 5 | 6 | 7 | 8 | 9 | 10 | 11 | 12 | 13 | 14 | Broadcast | 0         | 1         |

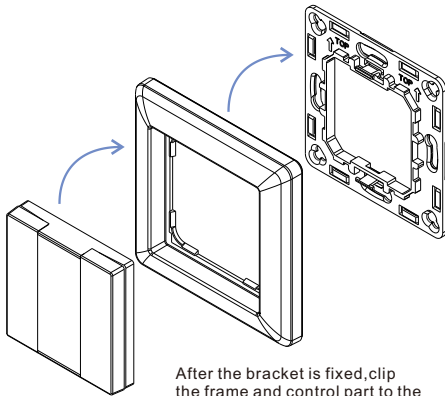
Installation



**Method 1:**Stick 3M glue on the back of the bracket and then stick the bracket to the wall



**Method 2:**Screw the bracket to the wall



Mounting

The key part of this controller is a universal, standard switch element that can be integrated in numerous frames by different manufactures as below list:

|        |                               |
|--------|-------------------------------|
| BEKER  | S1, B1, B3, B7 glass          |
| GIRA   | Standard55, E2, Event, Esprit |
| JUNG   | A500, Aplus                   |
| MERTEN | M-smart, M-Arc, M-Plan        |