

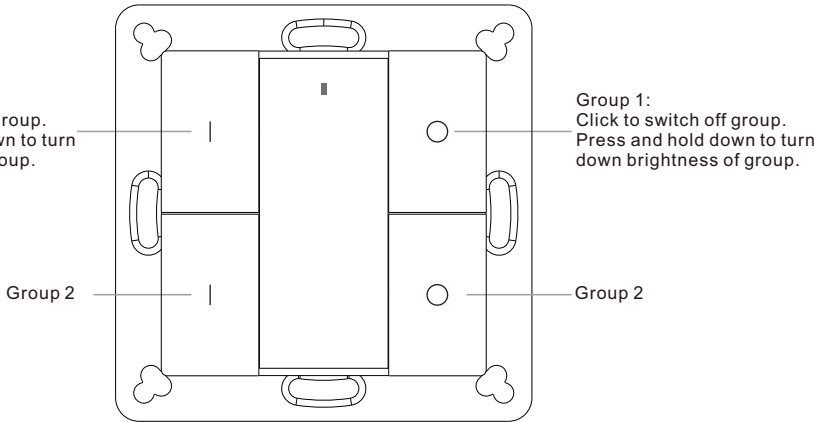
Push Button Single Color DALI Controller

70030008

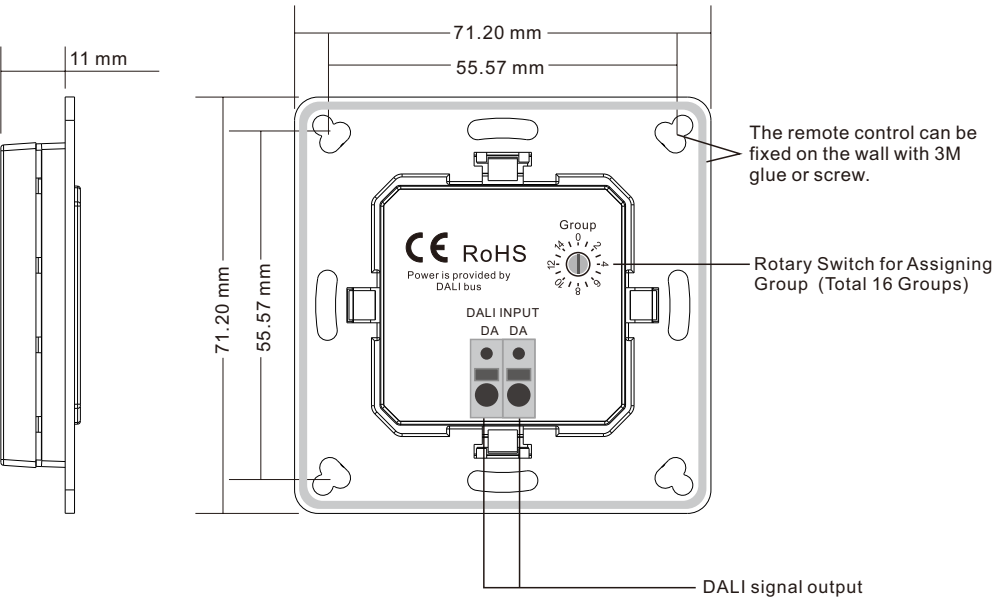


**Important:** Read All Instructions Prior to Installation

Function introduction



Front side



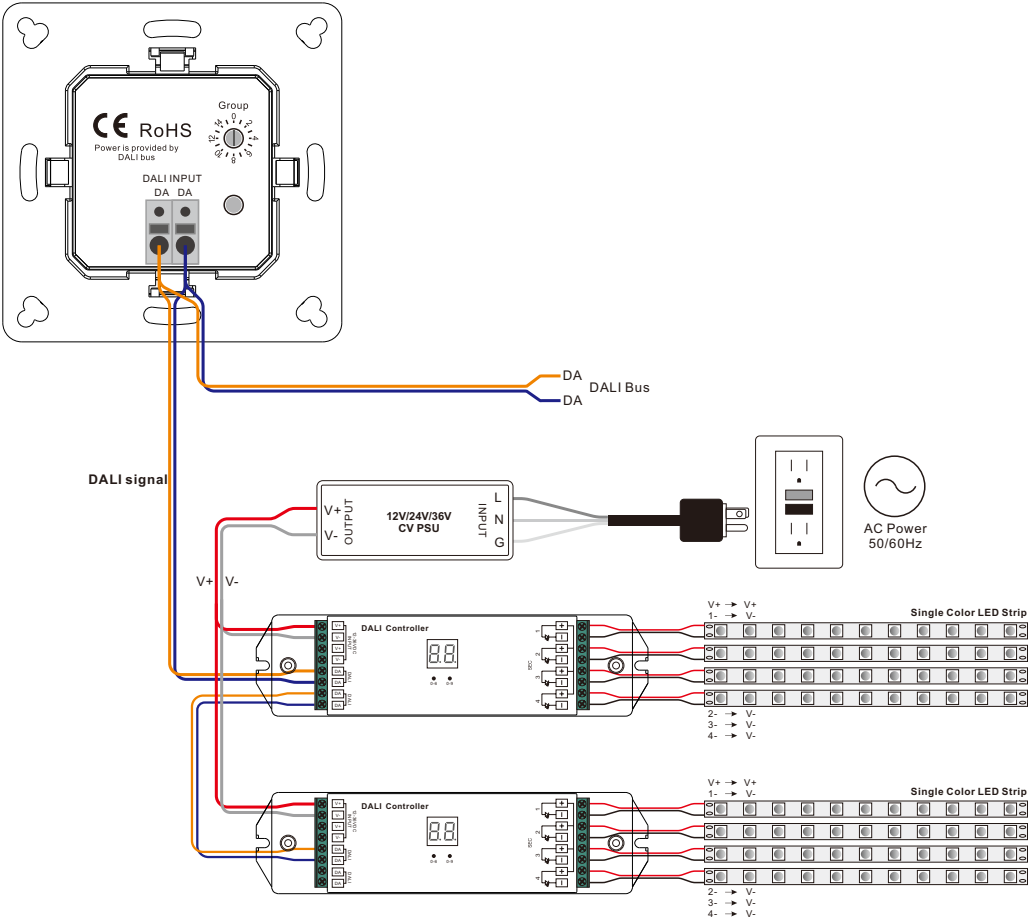
Back side

Product Data

Output	DALI signal
Power Supply	Supply By DALI Bus
Operation Current	4mA
Operating temperature	0-40°C
Relative humidity	8% to 80%
Dimensions	71.2x71.2x13.6mm

- DALI DT6 push button controller
- DALI bus powered, no extra power supply required
- Each channel DALI bus can install multiple controllers
- Enables to select and control 2 DALI groups from total 16 DALI groups
- Compatible with universal 55mm frames
- Waterproof grade: IP20

Wiring Diagram



Safety & Warnings

- DO NOT installed with power applied to device.
- DO NOT expose the device to moisture.

Operation

**1. Set starting Group number via rotary switch on the back: (0-15 selectable)**

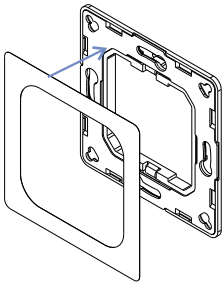
- This DALI touch panel controller enables dimming commands to be sent to 2 Groups of devices on the DALI circuit. A rotary switch on the back is used to select Groups you would like to control and set the starting Group number, and total 16 Groups (0-15) can be selected.

- When the rotary switch arrow position is at 0, group 1 buttons control all DALI devices on the circuit via broadcast, group 2 buttons control DALI Group 0.
- When the rotary switch arrow position is at X except 0 (1-14), group 1 controls DALI Group X-1, group 2 controls Group X.
- When the rotary switch arrow position is at 15, group 1 controls devices in DALI Group 14, group 2 controls all devices through broadcast.

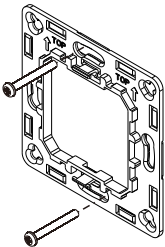
**Note: all DALI slaves on the circuit shall be assigned to one or more DALI groups by DALI master first.**  
Please refer to the detailed Group setting table as follows:

Rotary Switch Position	0	1	2	3	4	5	6	7	8	9	10	11	12	13	14	15
DALI Group for Group 1 Buttons	Broadcast	0	1	2	3	4	5	6	7	8	9	10	11	12	13	14
DALI Group for Group 2 Buttons	0	1	2	3	4	5	6	7	8	9	10	11	12	13	14	Broadcast

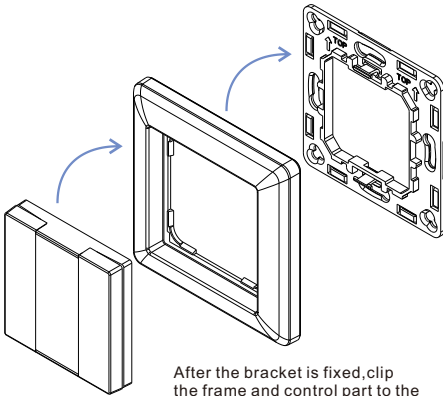
Installation



**Method 1:**Stick 3M glue on the back of the bracket and then stick the bracket to the wall



**Method 2:**Screw the bracket to the wall



After the bracket is fixed,clip the frame and control part to the bracket in sequence

Mounting

The key part of this controller is a universal, standard switch element that can be integrated in numerous frames by different manufactures as below list:

BEKER	S1, B1, B3, B7 glass
GIRA	Standard55, E2, Event, Esprit
JUNG	A500, Aplus
MERTEN	M-smart, M-Arc, M-Plan