

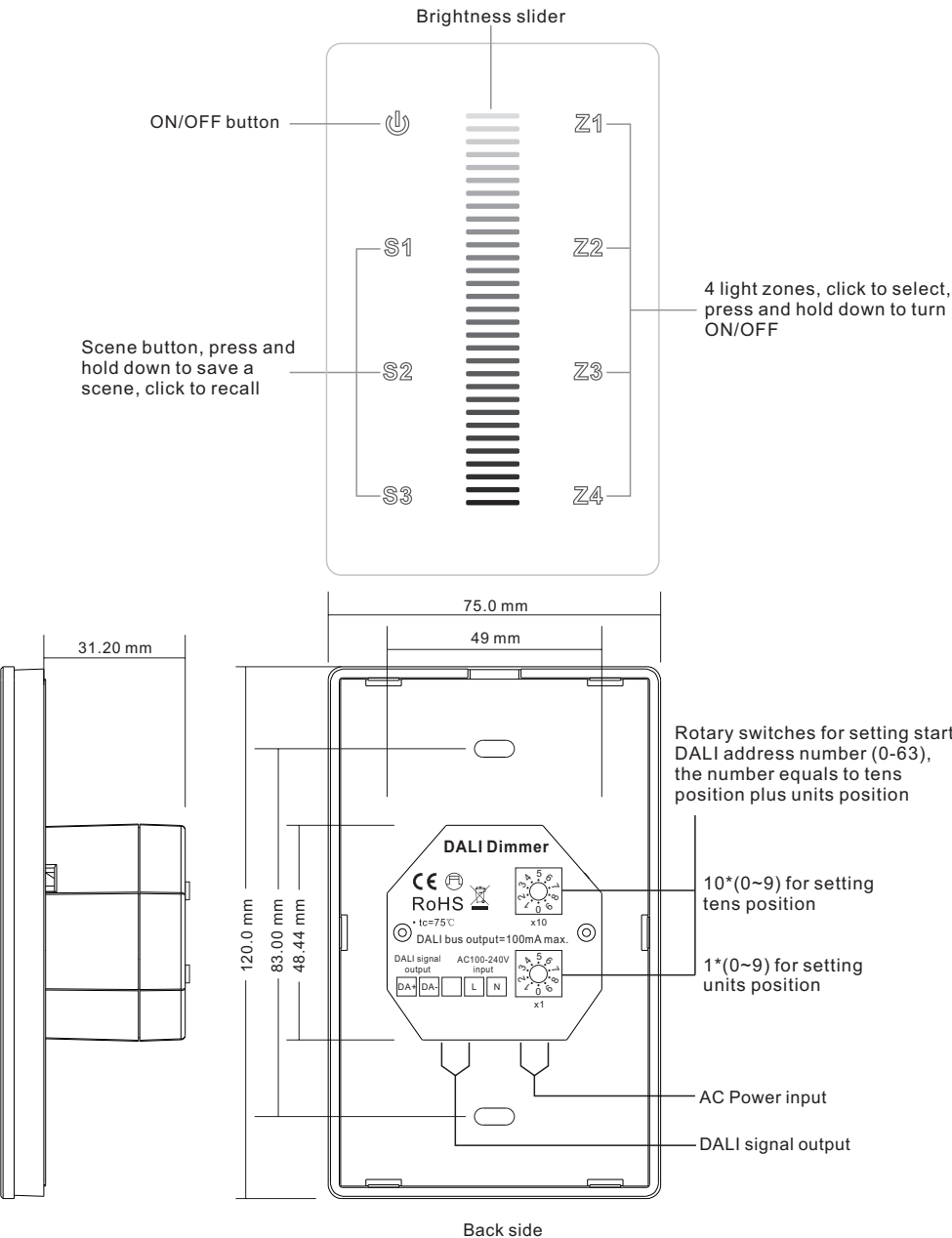
DALI Single Color Touch Controller

09.230TD6.04069



Important: Read All Instructions Prior to Installation

Function introduction



Product Data

Power supply	100-240VAC/DALI bus
Output	DALI signal
Operation current	<15 mA
DALI bus output	100 mA max.
DALI consumption	4 mA
Operating temperature	0-40°C
Relative humidity	8% to 80%
Dimensions	75x120x41.6mm
Waterproof grade	IP20

- Touch sensitive.
- Glass interface (white & black).
- Comply to DALI standard protocol IEC 62386-102, IEC 62386-207 and in compliance with DALI products from other international incorporation.
- Built-in 100mA DALI power supply to power up to max. 50 DALI ECGs
- Powered by DALI bus while not connected to AC mains
- Max. 100 DALI ECGs on a DALI line can be controlled by 4 control panels (2 by AC mains, 2 by DALI bus)
- 4 light zones are available for switch, dimming control, each zone can control 1 DALI address.
- Enable to set start DALI address number (0-63) for the 1 zone by rotary switches on the back.
- Enable to save 3 scenes

Safety & Warnings

- DO NOT install with power applied to device.
- DO NOT expose the device to moisture.

Operation

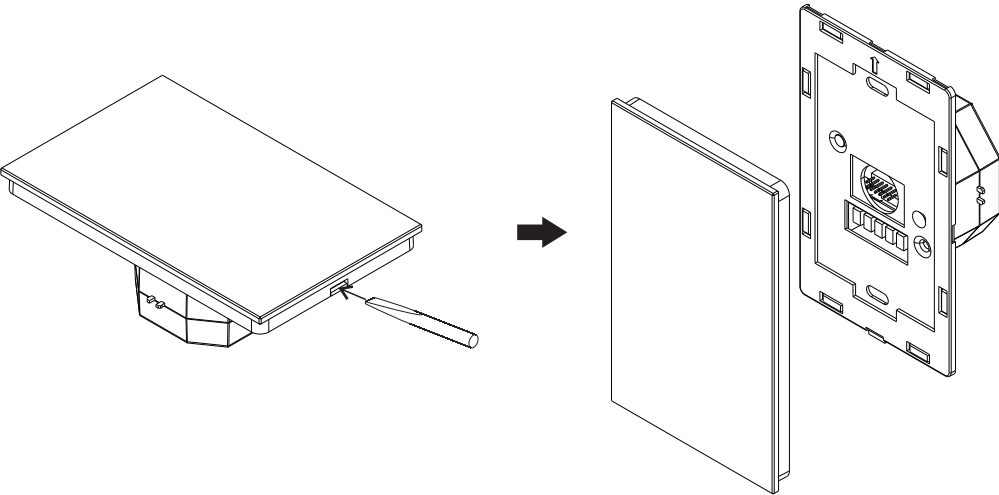
Set starting DALI address number to be controlled by rotary switches on the back:

Set the starting number as X (0-63), 4 light zones will control 4 successive DALI addresses X, X+1, X+2 and X+3:

- Zone 1 controls address X,
- Zone 2 controls address X+1,
- Zone 3 controls address X+2,
- Zone 4 controls address X+3.

Note: Please set the DALI dimmers' address the same as the starting address set on the control panel. if X is set as 63, the panel will control DALI address 63, 00, 01 and 02.

Installation



Wiring diagram

Figure 1: Wiring scheme to control up to 50 DALI ECG or control 4 DALI addresses.

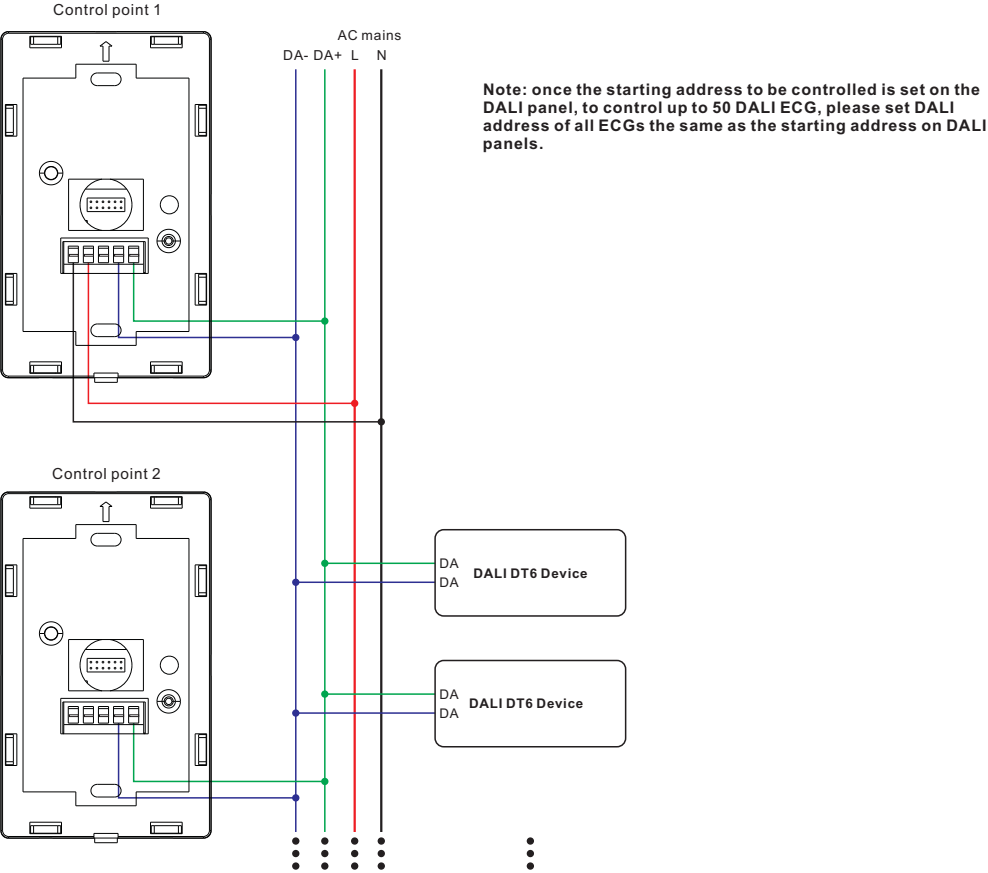


Figure 2: Wiring scheme with 2 DALI panels powered by AC mains to control up to 100 DALI ECG or control 4 DALI addresses.

