

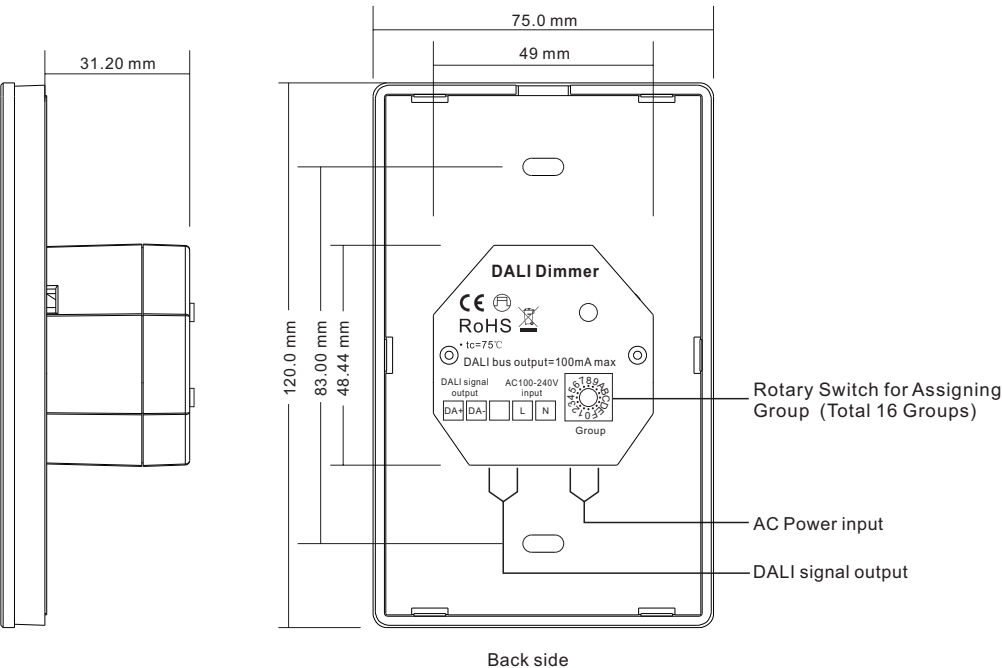
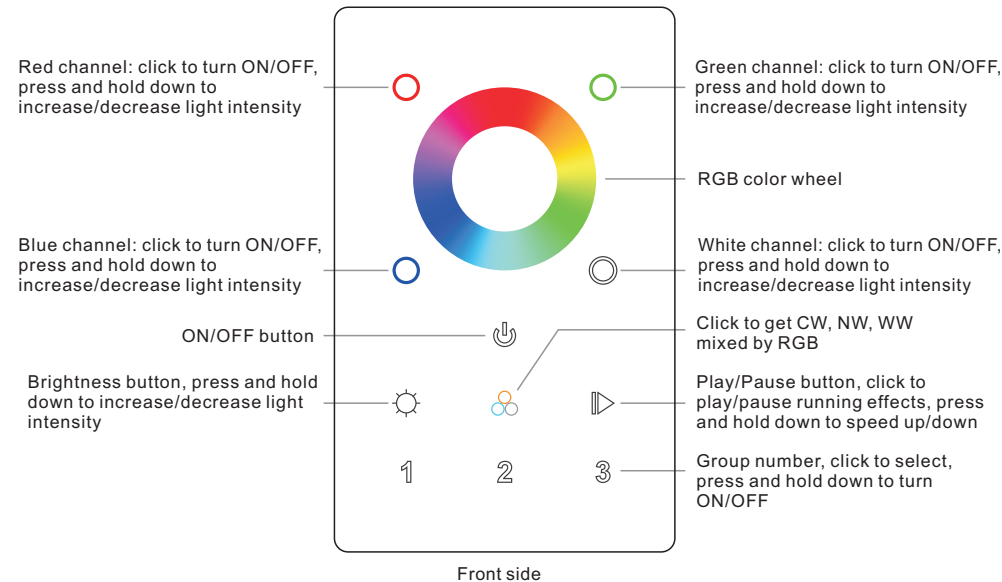
# DT8 DALI RGBW Touch Controller

70030131



**Important:** Read All Instructions Prior to Installation

## Function introduction



## Product Data

Mains supply	100-240VAC/DALI bus
Output	DALI signal
Operation current	<15 mA
DALI bus output	100 mA max.
DALI consumption	4 mA
Operating temperature	0-40°C
Relative humidity	8% to 80%
Dimensions	75x120x41.6mm
Waterproof grade	IP20

- Touch sensitive, glass interface(white & black).
- Comply to DALI standard protocol IEC 62386-209
- Built-in 100mA DALI power supply to power up to max. 50 DALI ECGs.
- Powered by DALI bus while not connected to AC mains.
- Max. 100 DALI ECGs on a DALI line can be controlled by 4 control panels via broadcast (2 by AC mains, 2 by DALI bus).
- Enable to control 3 DALI Groups, enable to set start DALI group number (0-15) by rotary switch on the back.
- Support DT8 devices, color adjustment according to DALI specifications of Device Type 8, Color Type RGBWAF.
- Each DT8 device is controlled via a single DALI address
- Built-in 10 Color Sequences

## Safety & Warnings

- DO NOT install with power applied to device.
- DO NOT expose the device to moisture.

## Operation

### 1. Set starting Group number via rotary switch on the back: (0-15 selectable)

- This DALI touch panel controller enables dimming commands to be sent to 3 Groups of devices on the DALI circuit. A rotary switch on the back is used to select Groups you would like to control and set the starting Group number, and total 16 Groups (0-15) can be selected.

- When the rotary switch arrow position is at 0, button 1 controls all DALI devices on the circuit via broadcast, button 2 controls devices in DALI Group 0, and button 3 controls devices in DALI Group 1.

- When the rotary switch arrow position is at X except 0 (1-D), button 1 controls devices in DALI Group X-1, button 2 controls devices in DALI Group X, and button 3 controls devices in DALI Group X+1.

For example: Rotary switch arrow at 1, button 1 controls DALI Group 0, button 2 controls DALI Group 1, and button 3 controls DALI Group 2. Rotary switch arrow at D, button 1 controls DALI Group 12, button 2 controls DALI Group 13, and button 3 controls DALI Group 14.

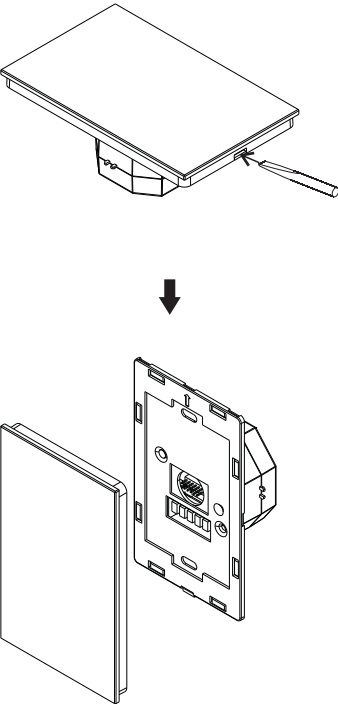
- When the rotary switch arrow position is at E, button 1 controls devices in DALI Group 13, button 2 controls devices in DALI Group 14, and button 3 controls all devices through broadcast.

- When the rotary switch arrow position is at F, button 1 controls devices in DALI Group 14, button 2 controls all devices through broadcast, and button 3 controls devices in DALI Group 0.

**Note: all DALI slaves on the circuit shall be assigned to one or more DALI groups by DALI master first.** Please refer to the detailed Group setting table as follows:

Rotary Switch Position	0	1	2	3	4	5	6	7	8	9	A	B	C	D	E	F
DALI Group for Button 1	Broadcast	0	1	2	3	4	5	6	7	8	9	10	11	12	13	14
DALI Group for Button 2	0	1	2	3	4	5	6	7	8	9	10	11	12	13	14	Broadcast
DALI Group for Button 3	1	2	3	4	5	6	7	8	9	10	11	12	13	14	Broadcast	0

Installation



Wiring diagram

Figure 1: Wiring scheme to control up to 50 DALI ECG via broadcast or control 3 DALI groups.

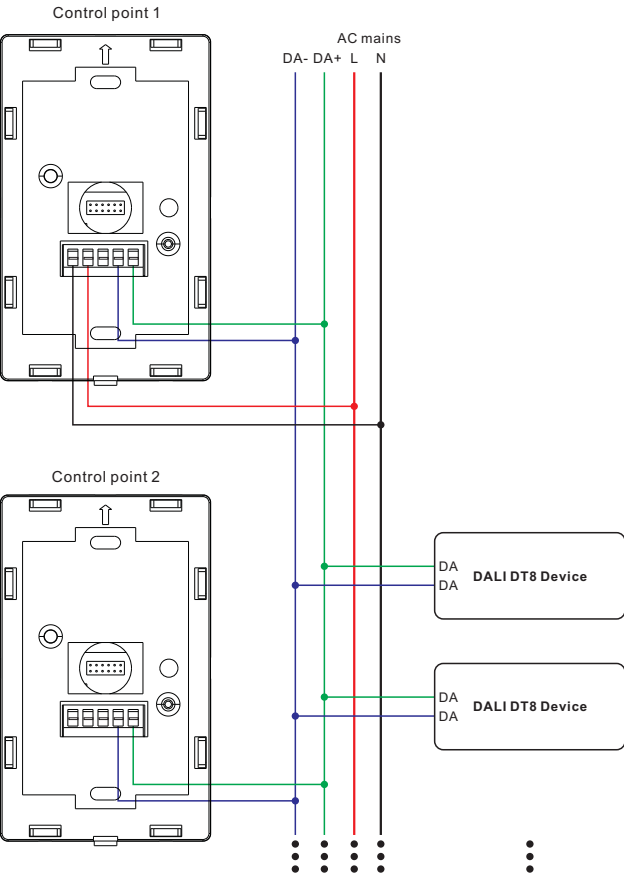
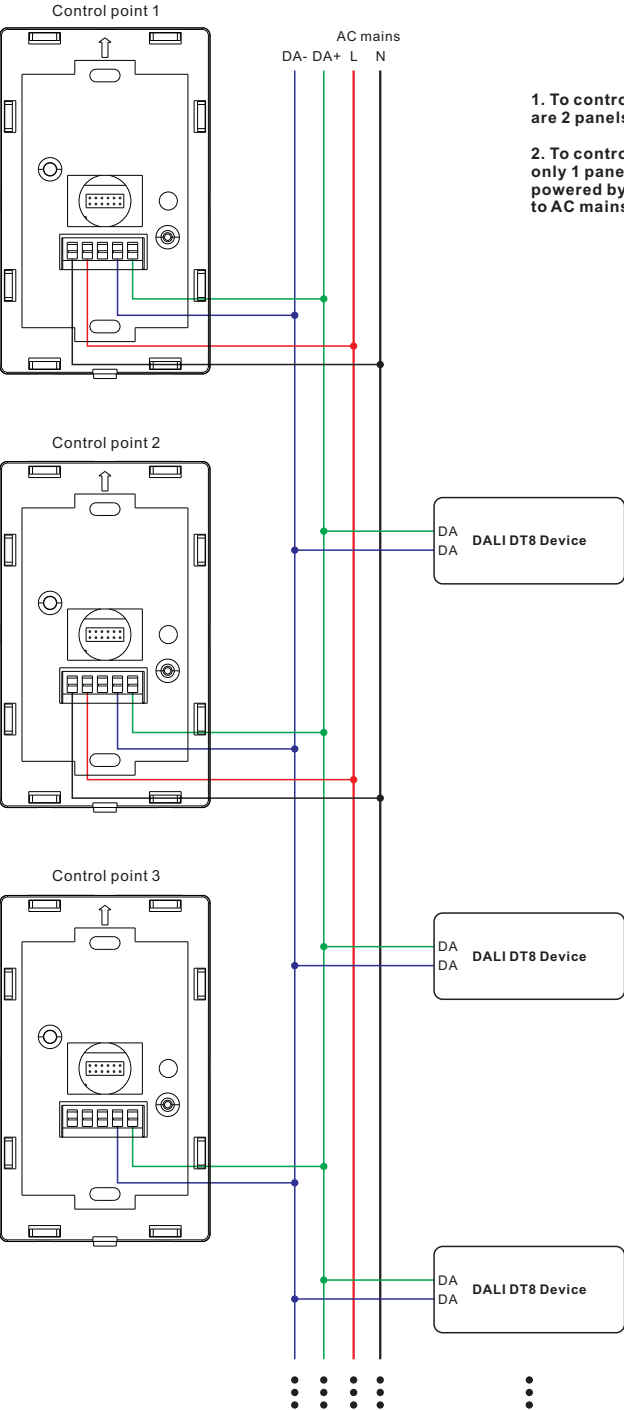


Figure 2: Wiring scheme with 2 DALI panels powered by AC mains to control up to 100 DALI ECG via broadcast or control 3 DALI groups.



- 1. To control up to 100 ECG with the setup (Figure 2), there are 2 panels connected to AC mains.
- 2. To control up to 50 ECG with the setup (Figure 1), there is only 1 panel connected to AC mains. Other panels are powered by DALI bus. Max. 2 DALI panels can be connected to AC mains in the same control circuit.