

Contents

CONTENTS ----- 1

1 Components ----- 2

2 Open NFC Programming Software ----- 2

3 Creat a NFC Configuration File ----- 3

4 Start to Write the parameters to the NFC Driver ----- 5

5 Handling batch production ----- 6

6 Copy a configuration from a device ----- 7

7 Tips ----- 7

DALI NFC PRODUCTION TOOL INSTRUCTION

1.Components



A NFC Reader



A USB-Micro USB Cable

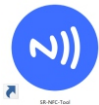


A Windows Computer



NFC Programming Software

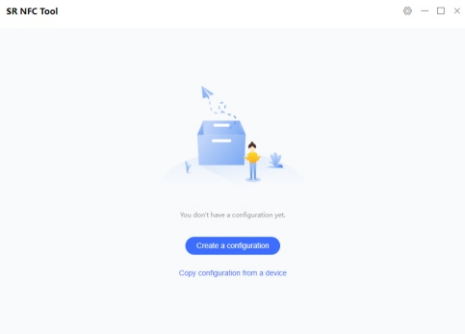
2. Open NFC Programming Software



NFC Programming Software

Step1: Find the “SR-NFC-TOOL” exe file and open it.

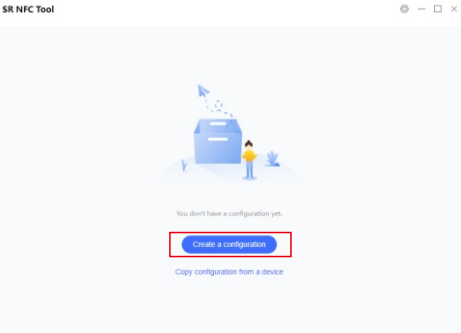
Please ask our sales to acquire latest version of NFC tool.



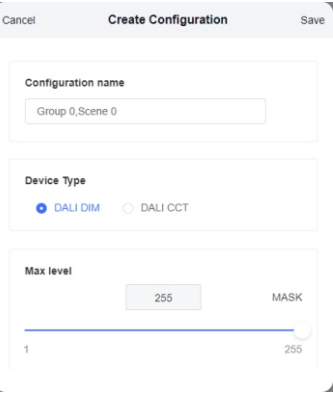
Main Page

Step2: Enter the main interface, and start to Creat a configuration.

3. Creat a NFC Configuration File



Step3: Click here and start to Creat a configuration.

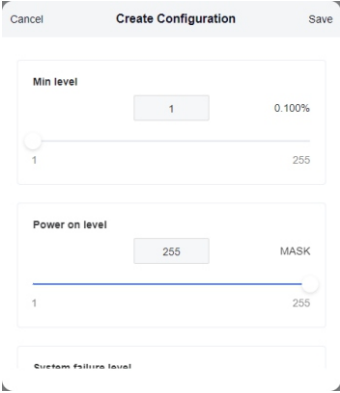


Step4: Select desired DALI parameters.

Profile Name: Group 0, Scene 1

Device Type: DIM

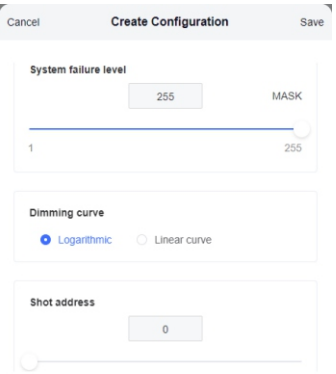
Max. Level: 256



Min. Level: 1

Power on Level: 255

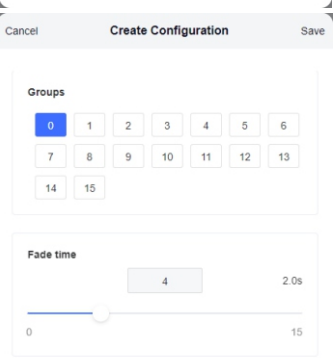
System Failure Level: 255



System Failure Level: 255

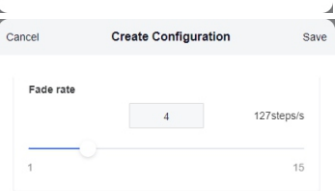
Dimming Curve: Logarithmic

Short Address: 0

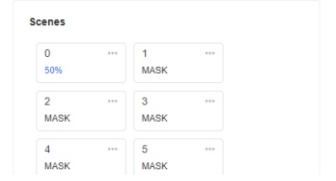


Groups: 0

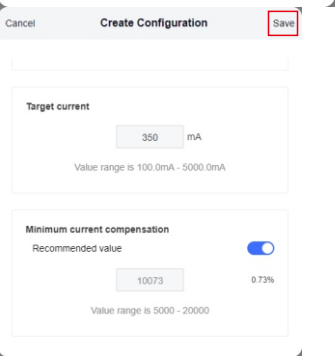
Fade Time: 4(2s)



Fade Rate: 4



Scenes: Scene 0 (50% light level)

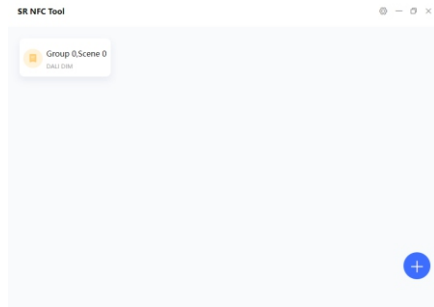


Target Current: 350mA (If of luminarie)

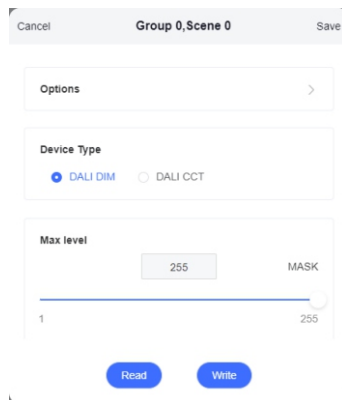
Current Compensation: Default setting 0.73%

Click "Save" to Save the Profile.

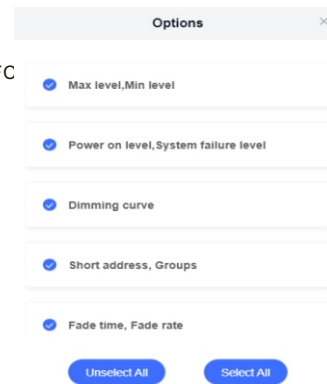
4. Start to Write the parameters to the NFC Driver



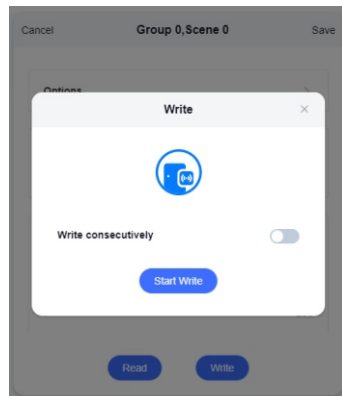
Step5: Back to the Mainpage, and click it.



Step6: Check the Options that you Would like to Write to the NFC Driver

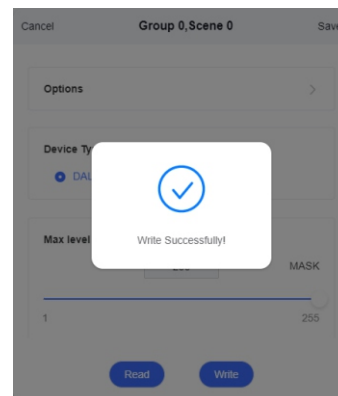


Step7: Click "Write"

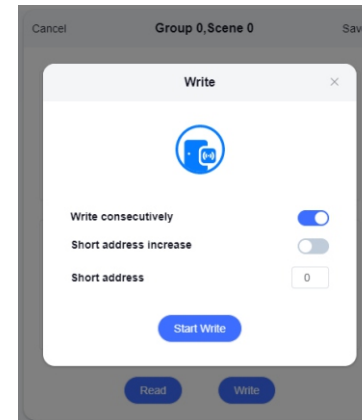


Step8: Click "Start Write"

Popping up with a "Write Successfully" means you made it.



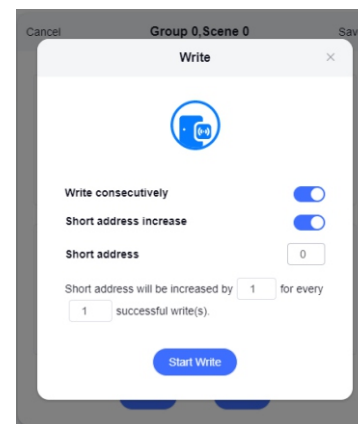
5. Handling batch production



1) Open "Write Consecutively".

2) Short address increase.

a) If you disable it, then all the NFC drivers you want to write will be the same as 0.



1) Open "Write Consecutively".

2) Short address increase.

a) If you enable it, then all the NFC driver's address will be increased by 1 for every 1 successful write(s).

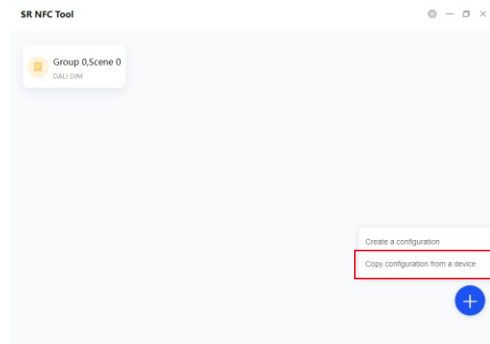
E.g. You have 10pcs NFC driver which are ready to be written within this tool. Then its following DALI parameter will list as follow:

DALI Address: 0/1/2/3/4/5/6/7/8/9

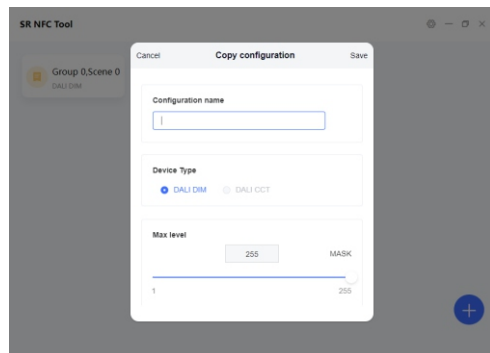
DALI Group: All NFC driver are in same group (0)

DALI Scene: All NFC driver have same scene 0 (50%)

6. Copy a configuration from a device



1) Click “Copy a configuration from a device”.



2) Popping up with a configuration(with parameter).

You shall name this new configuration.

Note: It is super flexible when you have a broken NFC Driver, and you just need to read its parameters and configure a new NFC driver, and replace it. That's it. You don't have to use the DALI master and PC software to configure all the address/ group/ scene setting...etc.

Just super easy and flexible within NFC tool.

Tips:

- 1) **NFC Driver doesn't need to be powered.**
- 2) **Current compensation default setting can help you achieve the best dimming performance per different current gear. But still we gave the options to customers which enable customized setting.**
- 3) **“SR NFC TOOL” enables Otau feature, thus once we have updated version, you shall be able to update it as well.**
- 4) **Make sure that NFC driver (NFC point) matches the NFC reader (NFC area).**

Update log

Date	Version	Update content	Update by
2022-11-7	V1.0	Initial Version	Romeo

Subject to change without notice. Please contact us if you have any question.