

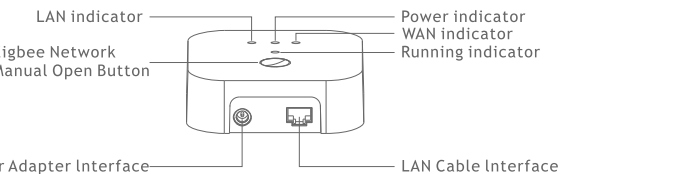


Azoula Smart Hub AZ220614A User Manual



Azoula Smart Hub Introduction

Azoula Smart Hub is the brain of Azoula's ecosystem. It can be connected with an Ethernet network, and supports interaction and connection with Azoula Zigbee accessories through Azoula Smart App via Zigbee 3.0 wireless protocol. It is HomeKit certified and Matter certified, which enable the hub to bridge Zigbee devices into Apple Home and Universal Matter platforms.



2

Download and Install App

Download Azoula Smart app from App Store or scan the QR code below. Follow the direction in the app to connect your devices properly.



Azoula Smart iOS QR Code

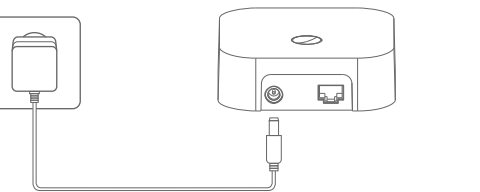


Azoula Smart Android QR Code

3

Connect Azoula Smart Hub to power

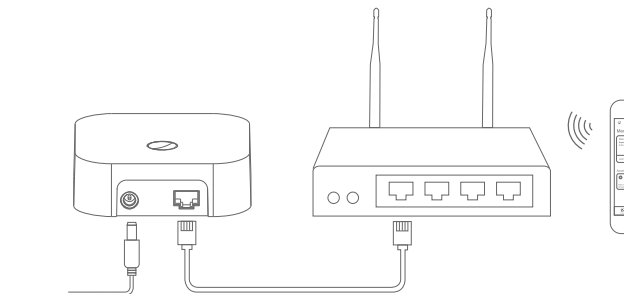
Connect the power adapter to the Smart Hub and plug it to mains socket.



4

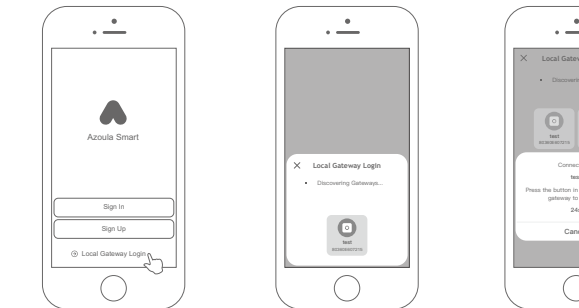
Connect Azoula Smart Hub to network

Connect Smart Hub's LAN port to a router with network cable. Make sure the cell phone for control connects to the same network.



5

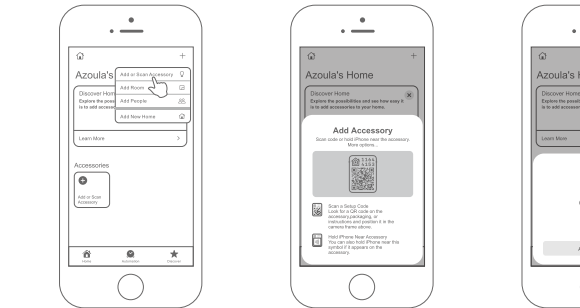
Setup the Smart Hub in Azoula Smart App



1. Open the Azoula Smart app, and tap "Local Gateway Login".
2. The app will discover the hub.
3. Tap to select a hub on the app, then click the button on the hub.

6

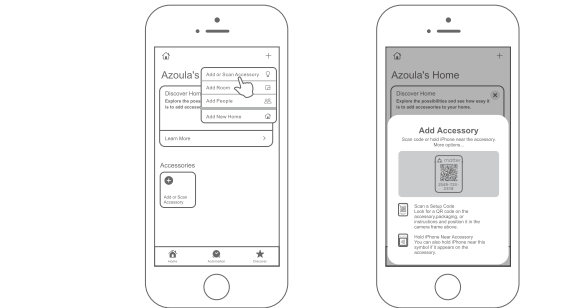
Setup Azoula Smart Hub in HomeKit



1. Tap "+" on the top right corner in Home app of iOS.
2. Tap "Add Accessory" on the menu.
3. Scan the HomeKit setup code as prompted onscreen.
4. Select your smart hub and follow the directions to complete setup.

7

Commisioning Azoula Smart Hub in Matter Platform



1. Setup your Matter platform, e.g. Apple Home App + HomePod mini.
2. Hold "reset" button on the hub for over 6 seconds to set it into pairing mode.
3. Tap on "+" on your Matter platform App e.g. Apple Home to add device.
4. Use the App to scan the Matter QR code on the back of the

8

hub.

5.The hub will be added to the Matter platform.

6.All Zigbee devices added to the hub will be listed in the

Matter platform App.

7.You can control the Zigbee devices through Matter platform.

Important Notes for Matter:

- Matter Network is up and running
- Thread border router compatible with the Matter

ecosystem is available and in the network

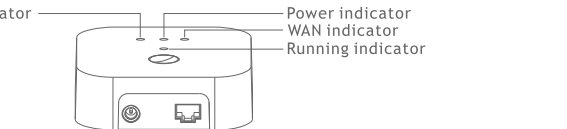
- Minimum requirements:

Android / Google: Android O (8.1, API level 27) or newer

iOS / Apple: iOS version 16.x or newer

- Matter ready devices

Indicator Lights State



State	LAN indicator: solid blue	Connected to a router
	LAN indicator: flashing blue slowly	Not connected to a router
	Power indicator: solid red	Power connected
	WAN indicator: solid blue	Connected to Internet
	WAN indicator: flashing blue slowly	Not connected to Internet
	Running indicator: flashing blue 6 times rapidly	The smart hub is reset to factory default or manually enter adding device mode
	Running indicator: flashing blue for 5 seconds rapidly	Identified by HomeKit App

FCC STATEMENT

This equipment has been tested and found to comply with the limits for a Class B digital device, pursuant to Part 15 of the FCC Rules. These limits are designed to provide reasonable protection against harmful interference in a residential installation. This equipment generates uses and can radiate radio frequency energy and, if not installed and used in accordance with the instructions, may cause harmful interference to radio communications.

However, there is no guarantee that interference will not occur in a particular installation. If this equipment does cause harmful interference to radio or television reception, which can be determined by turning the equipment off and on, the user is encouraged to try to correct the interference by one or more of the following measures:

- Reorient or relocate the receiving antenna.
- Increase the separation between the equipment and receiver.
- Connect the equipment into an outlet on a circuit different from that to which the receiver is connected.
- Consult the dealer or an experienced radio/TV technician for help.

This device complies with part 15 of the FCC Rules. Operation is

IC STATEMENT

This device complies with Industry Canada's licence-exempt RSSs. Operation is subject to the following two conditions: (1) This device may not cause interference; and (2) this device must accept any interference received, including interference that may cause undesired operation. Changes or modifications not expressly approved by the party responsible for compliance could void the user's authority to operate the equipment. The distance between user and products should be no less than 20cm.

This device complies with Industry Canada's licence-exempt RSSs. Operation is subject to the following two conditions:

- (1) This device may not cause interference; and
- (2) This device must accept any interference, including interference that may cause undesired operation of the device. Le présent appareil est conforme aux CNR d'Industrie Canada applicables aux appareils radio exempts de licence. L'exploitation est autorisée aux deux conditions suivantes :

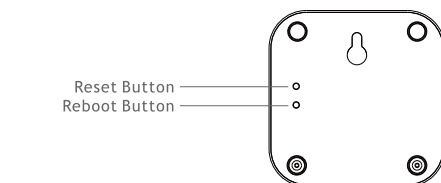
- (1) l'appareil ne doit pas produire de brouillage, et
- (2) l'utilisateur de l'appareil doit accepter tout brouillage radioélectrique subi, même si le brouillage est susceptible d'en compromettre le fonctionnement.

Reset to Factory Default

Press and hold the reset button for over 5 seconds until all indicators turns off, which means the hub is resetting, the resetting takes up to 1 minute, after all indicators turn on again, the reset is successful.

Reboot

Short press the reboot button to reset power of the smart hub, all indicators will turn off, then the gateway will restart.



How to open Zigbee Network Manually

Short press Zigbee Network manual open button 5 times continuously to open Zigbee Network manually, which will allow the endpoints to join the network.

How to put the gateway back in advertising unpaired mode when last admin pairing is removed:

There are 2 methods as follows:

- 1.Restart the smart hub by resetting power of the gateway
- 2.Factory reset the smart hub by pressing and holding reset button for over 5 seconds

Notes

1. Ensure the hub and the cell phone for control are on the same network
2. Each hub supports connecting up to around 150 devices.
3. Do not soak or wash your devices.

Controlling this HomeKit-enabled accessory automatically and away from home requires an Apple TV with tvOS 14.0 or later or an iPad with iOS 14.0 or later set up as a home hub.

Communication between iPhone, iPad and the HomeKit-enabled Gateway is secured by HomeKit technology.

Use of the Works with Apple Home badge means that an accessory has been designed to work specifically with the technology identified in the badge and has been certified by the developer to meet Apple performance standards.

Apple, Apple TV, Apple Watch, iPad, iPad Air, iPad Pro, iPhone, and Lightning are trademarks of Apple Inc., registered in the U.S. and other countries. tvOS is a trademark of Apple Inc. You can easily and securely control accessories that are compatible with Apple Home such as lights, doors, thermostats, and more with the Home app and Siri on your iPhone, iPad, Apple Watch, HomePod, HomePod mini, or Mac using Apple HomeKit technology. Controlling this HomeKit-enabled accessory requires an iPhone or iPad. Adaptive Lighting requires a HomePod, HomePod mini, or Apple TV set up as a home hub. It is recommended that you update to the latest software and operating system. To control this HomeKit-enabled accessory, the latest version of iOS or iPadOS is recommended. A customer who owns an Apple TV (4th generation or later) with tvOS 10 or later or a HomePod or HomePod mini can control HomeKit-enabled accessories away from home and automatically through triggers such as time of day, location, sensor detection, or the action of an accessory. The Azoula Smart Hub enables endpoints HK-ZD-CCT-A, HK-ZD-RGBCT-A, HK-LN-DIM-A, HK-SL-DIM-EU-A, HK-SL-DIM-US-A, HK-LN-SOCKET-A, HK-SENSOR-4IN1-A, HK-SENSOR-CT-A, HK-LN-HEATER-A to work with HomeKit technology. See user manual of the endpoints for more details.